

THE WATER GARDENS, LONDON W2

£1,400 PW



MAYFAIR SQUARE

1 Mayfair Place, London W1J 8AJ, United Kingdom

+44 (0)207 184 9888 | info@mayfairsquare.co.uk | www.mayfairsquare.co.uk

THE WATER GARDENS, LONDON W2

£1,400 PW

PROPERTY DESCRIPTION

A stunning duplex three-bedroom apartment spanning 1,586 sq ft in the prestigious Water Gardens development, Paddington.

Spanning the ninth and tenth floors with excellent views of the London skyline, this exceptional split-level apartment features a spacious double-height reception and dining area, seamlessly connecting to a private terrace via sliding doors. The separate kitchen, guest cloakroom, and ample storage enhance the functionality of the space.

The property boasts three generously sized double bedrooms, all with floor-to-ceiling fitted wardrobes. Two bedrooms benefit from en-suite facilities, while a further family shower room serves the third.

Additional highlights include 1,586 sq ft of beautifully designed living space, an abundance of natural light, 24-hour porter service, and access to the stunning landscaped communal gardens within this private gated development.

Nestled within a private gated development just off Edgware Road, The Water Gardens is a landmark residential community renowned for its beautifully landscaped podium deck, featuring tranquil water features, lush greenery, and elegant walkways. Designed to provide a peaceful retreat from the city, the cascading fountains and thoughtfully curated gardens create a unique sense of calm amidst urban London.

The Water Gardens is ideally located within walking distance of Marble Arch, Paddington, Edgware Road, Oxford Street, and Hyde Park, offering easy access to excellent transport links and central London's finest amenities.

Ideally situated within walking distance of Paddington, Marble Arch, Edgware Road, Oxford Street, and Hyde Park, The Water Gardens offers convenient access to excellent transport links and the very best of central London's amenities.



MAYFAIR SQUARE

1 Mayfair Place, London W1J 8AJ, United Kingdom

+44 (0)207 184 9888 | info@mayfairsquare.co.uk | www.mayfairsquare.co.uk

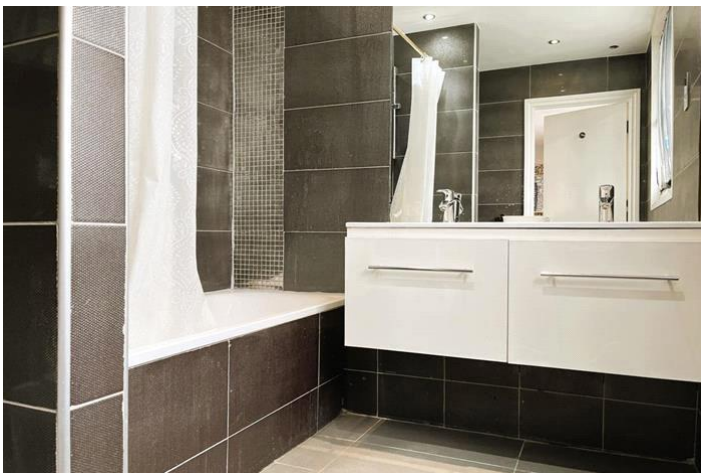
THE WATER GARDENS, LONDON W2
£1,400 PW



MAYFAIR SQUARE

1 Mayfair Place, London W1J 8AJ, United Kingdom

+44 (0)207 184 9888 | info@mayfairsquare.co.uk | www.mayfairsquare.co.uk



MAYFAIR SQUARE

1 Mayfair Place, London W1J 8AJ, United Kingdom

+44 (0)207 184 9888 | info@mayfairsquare.co.uk | www.mayfairsquare.co.uk



MAYFAIR SQUARE

1 Mayfair Place, London W1J 8AJ, United Kingdom

+44 (0)207 184 9888 | info@mayfairsquare.co.uk | www.mayfairsquare.co.uk



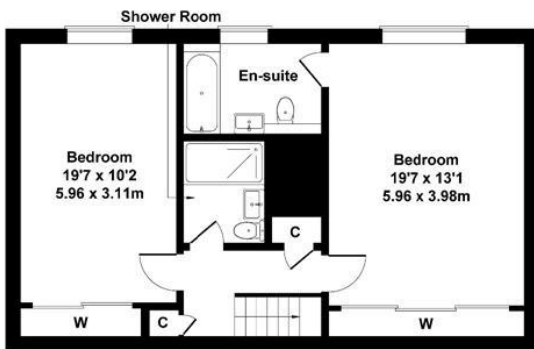
MAYFAIR SQUARE

1 Mayfair Place, London W1J 8AJ, United Kingdom

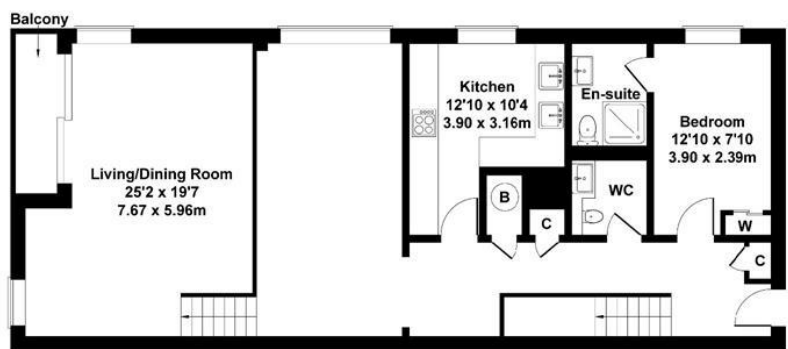
+44 (0)207 184 9888 | info@mayfairsquare.co.uk | www.mayfairsquare.co.uk

The Water Gardens

Approximate Gross Internal Area
1593 sq ft - 148 sq m



NINTH FLOOR



TENTH FLOOR

Not to Scale.
For Illustrative Purposes Only.



MAYFAIR SQUARE


1 Mayfair Place, London W1J 8AJ, United Kingdom

+44 (0)207 184 9888 | info@mayfairsquare.co.uk | www.mayfairsquare.co.uk

THE WATER GARDENS, LONDON W2

£1,400 PW



Energy Efficiency Rating		Current	Potential
<i>Very energy efficient - lower running costs</i>			
(92-100) A			
(81-91) B			
(69-80) C			
(55-68) D		59	60
(39-54) E			
(21-38) F			
(1-20) G			
<i>Not energy efficient - higher running costs</i>			
England & Wales		EU Directive 2002/91/EC 	

The energy efficiency rating is a measure of the overall efficiency of a home. The higher the rating the more energy efficient the home is and the lower the fuel bills will be.



MAYFAIR SQUARE

1 Mayfair Place, London W1J 8AJ, United Kingdom

+44 (0)207 184 9888 | info@mayfairsquare.co.uk | www.mayfairsquare.co.uk

THE WATER GARDENS, LONDON W2

£1,400 PW

FOR MORE INFORMATION PLEASE CONTACT US

Important Notice:

Particulars: These particulars are not an offer or contract, nor part of one. You should not rely on statements by Mayfair Square in the particulars or by word of mouth or in writing ("information") as being factually accurate about the property, its condition or its value. Neither Mayfair Square nor any joint agent has any authority to make any representations about the property, and accordingly any information given is entirely without responsibility on the part of the agents, seller(s), lessor(s) or landlord(s).

Any areas, measurements or distances are approximate. The text, photographs and plans are for guidance only and are not necessarily comprehensive. Regulations etc: Any reference to alterations to, or use of, any part of the property does not mean that any necessary planning, building regulations or other consent has been obtained. A buyer or lessee must find out by inspection or in other ways that these matters have been properly dealt with and that all information is correct.



MAYFAIR SQUARE

1 Mayfair Place, London W1J 8AJ, United Kingdom

+44 (0)207 184 9888 | info@mayfairsquare.co.uk | www.mayfairsquare.co.uk
