

CHARLES CLOWES WALK, LONDON SW11
£1,124 PW



MAYFAIR SQUARE

1 Mayfair Place, London W1J 8AJ, United Kingdom

+44 (0)207 184 9888 | info@mayfairsquare.co.uk | www.mayfairsquare.co.uk

CHARLES CLOWES WALK, LONDON SW11

£1,124 PW

PROPERTY DESCRIPTION

An elegantly designed two-bedroom, two-bathroom apartment spanning 902 sq ft, situated in the heart of Nine Elms on London's iconic South Bank.

Situated on the 3rd floor of this prestigious building, the apartment offers luxury living with a 24-hour concierge service, dedicated building manager, lift access, gym, media room, boardroom, and secure underground parking.

The apartment features a spacious reception room, complete with Samsung Smart TVs and Bose soundbars, seamlessly integrated with Amazon Alexa for controlling the lighting, TV, and heating systems. The reception room opens onto a private balcony and flows into an open-plan, fully fitted kitchen with integrated AEG appliances and floor-to-ceiling windows that offer stunning, far-reaching views across London.

The property includes two generously sized double bedrooms and two modern bathrooms, one of which is an en-suite to the master bedroom. Ample storage space is thoughtfully incorporated throughout the apartment for added convenience.

Residents can enjoy the exclusive amenities within this luxury development, including a well-equipped gym, a media room, a board room, and secure underground parking. Additionally, the private landscaped podium gardens provide a tranquil retreat.

This residential development draws inspiration from the iconic skyscrapers of New York City and is located in Zone 1, offering convenient access to two new Northern Line underground stations. With tree-lined footpaths, dedicated cycle lanes, the Clipper river service, local buses, and the nearby Pimlico bridge, transportation options abound, connecting you effortlessly to the neighbouring Royal Boroughs of Kensington and Chelsea.



MAYFAIR SQUARE

1 Mayfair Place, London W1J 8AJ, United Kingdom

+44 (0)207 184 9888 | info@mayfairsquare.co.uk | www.mayfairsquare.co.uk

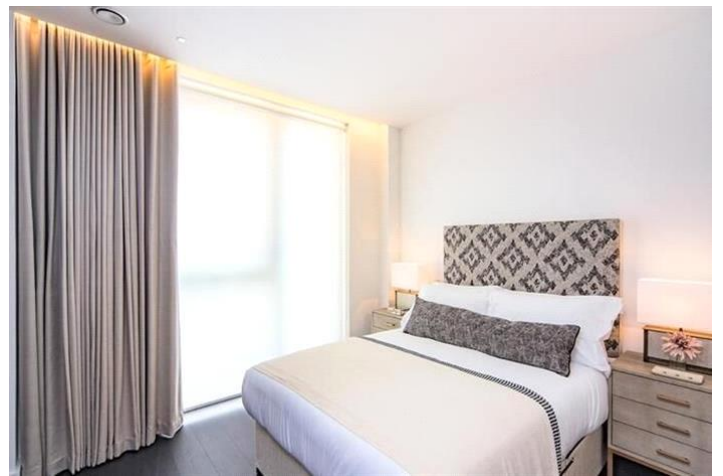
CHARLES CLOWES WALK, LONDON SW11
£1,124 PW



MAYFAIR SQUARE

1 Mayfair Place, London W1J 8AJ, United Kingdom

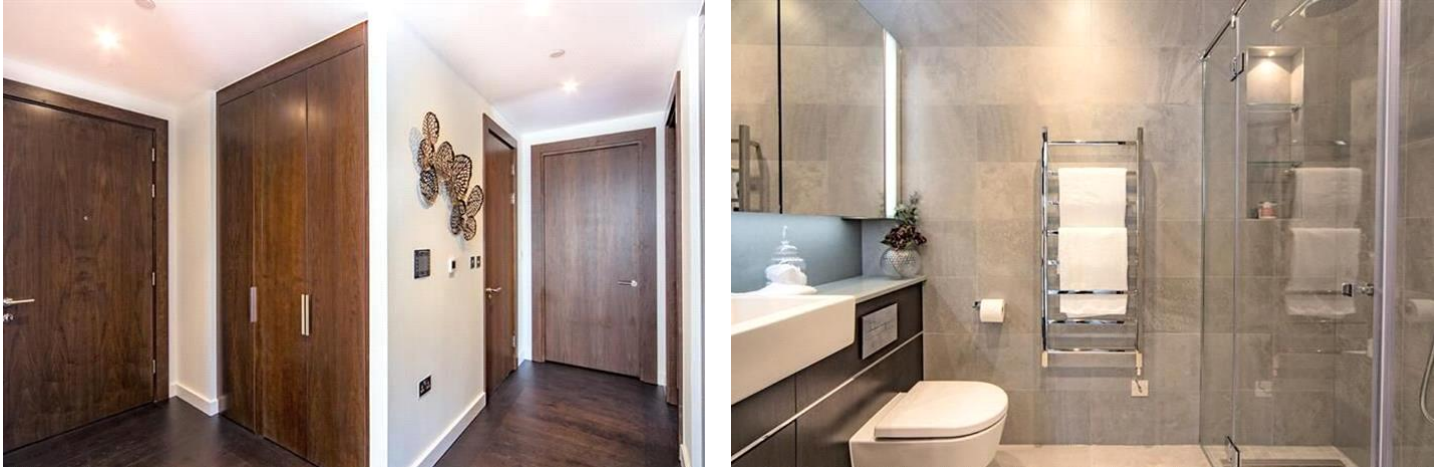
+44 (0)207 184 9888 | info@mayfairsquare.co.uk | www.mayfairsquare.co.uk



MAYFAIR SQUARE

1 Mayfair Place, London W1J 8AJ, United Kingdom

+44 (0)207 184 9888 | info@mayfairsquare.co.uk | www.mayfairsquare.co.uk



MAYFAIR SQUARE

1 Mayfair Place, London W1J 8AJ, United Kingdom

+44 (0)207 184 9888 | info@mayfairsquare.co.uk | www.mayfairsquare.co.uk



THIRD FLOOR

APPROX. GROSS INTERNAL AREA *
Apartment - 962 Ft² - 83.77 M²
Balcony - 70 Ft² - 6.50 M²

Property Details
APARTMENT 18
THORNES HOUSE
4 CHARLES CLOWES WALK
LONDON
SW11 7AG

Plans Drawn: 29.01.2019

Surveyed and Drawn By:
BXR
Hidaway Work Space
1 Empire Way
London
SW16 2BF
Tel: 0203 207 3023
info@bxfloorplans.co.uk
www.bxfloorplans.co.uk
© BXR 2019



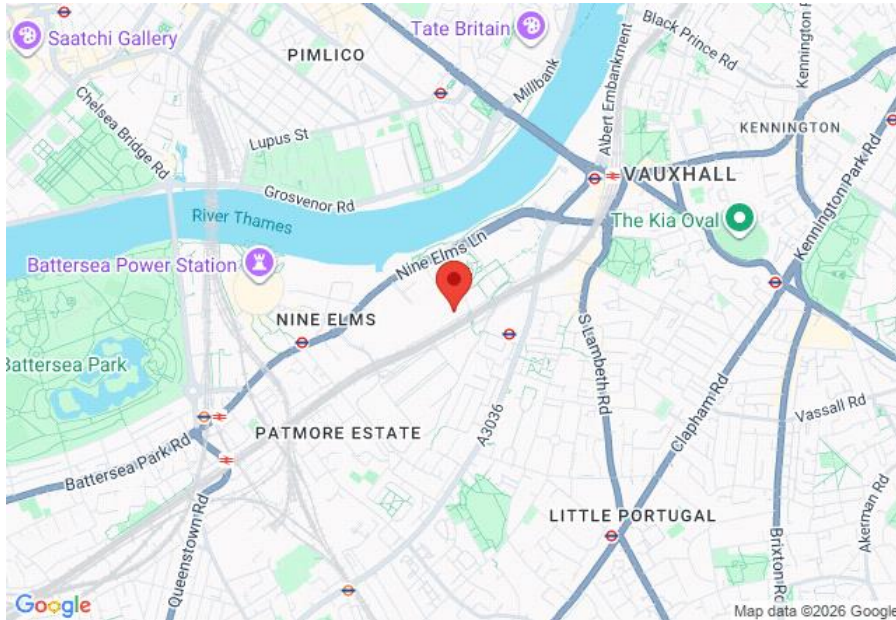
MAYFAIR SQUARE

1 Mayfair Place, London W1J 8AJ, United Kingdom

+44 (0)207 184 9888 | info@mayfairsquare.co.uk | www.mayfairsquare.co.uk

CHARLES CLOWES WALK, LONDON SW11

£1,124 PW



Energy Efficiency Rating		
	Current	Potential
Very energy efficient - lower running costs		
(92-100) A		
(81-91) B	86	86
(69-80) C		
(55-68) D		
(39-54) E		
(21-38) F		
(1-20) G		
Not energy efficient - higher running costs		
England & Wales	EU Directive 2002/91/EC	

The energy efficiency rating is a measure of the overall efficiency of a home. The higher the rating the more energy efficient the home is and the lower the fuel bills will be.



MAYFAIR SQUARE

1 Mayfair Place, London W1J 8AJ, United Kingdom

+44 (0)207 184 9888 | info@mayfairsquare.co.uk | www.mayfairsquare.co.uk

CHARLES CLOWES WALK, LONDON SW11
£1,124 PW

FOR MORE INFORMATION PLEASE CONTACT US

Important Notice:

Particulars: These particulars are not an offer or contract, nor part of one. You should not rely on statements by Mayfair Square in the particulars or by word of mouth or in writing ("information") as being factually accurate about the property, its condition or its value. Neither Mayfair Square nor any joint agent has any authority to make any representations about the property, and accordingly any information given is entirely without responsibility on the part of the agents, seller(s), lessor(s) or landlord(s).

Any areas, measurements or distances are approximate. The text, photographs and plans are for guidance only and are not necessarily comprehensive. Regulations etc: Any reference to alterations to, or use of, any part of the property does not mean that any necessary planning, building regulations or other consent has been obtained. A buyer or lessee must find out by inspection or in other ways that these matters have been properly dealt with and that all information is correct.



MAYFAIR SQUARE

1 Mayfair Place, London W1J 8AJ, United Kingdom

+44 (0)207 184 9888 | info@mayfairsquare.co.uk | www.mayfairsquare.co.uk
