

PALACE WHARF, RAINVILLE ROAD, LONDON W6
£1,935 PW



MAYFAIR SQUARE

1 Mayfair Place, London W1J 8AJ, United Kingdom

+44 (0)207 184 9888 | info@mayfairsquare.co.uk | www.mayfairsquare.co.uk

PALACE WHARF, RAINVILLE ROAD, LONDON W6

£1,935 PW

PROPERTY DESCRIPTION

A luxury three-bedroom triplex apartment featuring stunning views of the River Thames.

This beautifully designed three-bedroom, three-bathroom apartment features a spacious balcony and terrace with stunning river views, nestled within a newly converted warehouse-style gated development along the River Thames.

Spanning over 1,200 sq. ft. across three floors, the first floor includes a master bedroom with an ensuite shower room and a private balcony, while the second bedroom also boasts its own ensuite bathroom. The second floor features an additional bedroom, a shower room, a separate laundry room with a washer/dryer, and a generous kitchen/diner perfect for entertaining. The third floor grants access to the private roof terrace overlooking the river.

The fully fitted Metris kitchen is equipped with Miele appliances, including an integrated dishwasher, full-height fridge freezer, oven, hob, extractor fan, and a Caple wine cooler. Each bathroom includes full suites with underfloor heating, while the bedrooms come with bespoke mirrored wardrobes and automatic lighting.

Additional benefits include comfort cooling in the master bedroom and kitchen/diner, a Crestron audio-visual system, a digital video door entry system, and pre-wiring for Sky+ TV.

Located by the riverside, Palace Wharf is conveniently close to various transport links, including Hammersmith Overground and Underground Station, Barons Court, Putney Bridge, and Fulham Broadway Underground Stations, along with several regular bus services for enhanced accessibility.



MAYFAIR SQUARE

1 Mayfair Place, London W1J 8AJ, United Kingdom

+44 (0)207 184 9888 | info@mayfairsquare.co.uk | www.mayfairsquare.co.uk

PALACE WHARF, RAINVILLE ROAD, LONDON W6
£1,935 PW



MAYFAIR SQUARE

1 Mayfair Place, London W1J 8AJ, United Kingdom

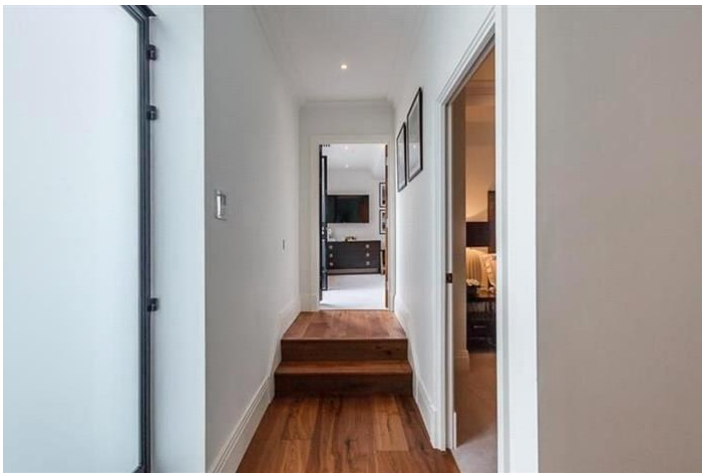
+44 (0)207 184 9888 | info@mayfairsquare.co.uk | www.mayfairsquare.co.uk



MAYFAIR SQUARE

1 Mayfair Place, London W1J 8AJ, United Kingdom

+44 (0)207 184 9888 | info@mayfairsquare.co.uk | www.mayfairsquare.co.uk



MAYFAIR SQUARE

1 Mayfair Place, London W1J 8AJ, United Kingdom

+44 (0)207 184 9888 | info@mayfairsquare.co.uk | www.mayfairsquare.co.uk



MAYFAIR SQUARE

1 Mayfair Place, London W1J 8AJ, United Kingdom

+44 (0)207 184 9888 | info@mayfairsquare.co.uk | www.mayfairsquare.co.uk



SECOND FLOOR

1

Property Details:

FLAT STARBO
PALACE WHAI
RAINVILLE RO
LONDON W6

APPROX. GROSS INTERNAL AREA *
1214 Ft² - 112.78 M²

Plans Drawn: C



MAYFAIR SQUARE


1 Mayfair Place, London W1J 8AJ, United Kingdom

+44 (0)207 184 9888 | info@mayfairsquare.co.uk | www.mayfairsquare.co.uk

PALACE WHARF, RAINVILLE ROAD, LONDON W6

£1,935 PW



Energy Efficiency Rating		
	Current	Potential
Very energy efficient - lower running costs		
(92-100) A		
(81-91) B		
(69-80) C		
(55-68) D		
(39-54) E	46	46
(21-38) F		
(1-20) G		
Not energy efficient - higher running costs		
England & Wales	EU Directive 2002/91/EC 	

The energy efficiency rating is a measure of the overall efficiency of a home. The higher the rating the more energy efficient the home is and the lower the fuel bills will be.



MAYFAIR SQUARE

1 Mayfair Place, London W1J 8AJ, United Kingdom

+44 (0)207 184 9888 | info@mayfairsquare.co.uk | www.mayfairsquare.co.uk

PALACE WHARF, RAINVILLE ROAD, LONDON W6
£1,935 PW

FOR MORE INFORMATION PLEASE CONTACT US

Important Notice:

Particulars: These particulars are not an offer or contract, nor part of one. You should not rely on statements by Mayfair Square in the particulars or by word of mouth or in writing ("information") as being factually accurate about the property, its condition or its value. Neither Mayfair Square nor any joint agent has any authority to make any representations about the property, and accordingly any information given is entirely without responsibility on the part of the agents, seller(s), lessor(s) or landlord(s).

Any areas, measurements or distances are approximate. The text, photographs and plans are for guidance only and are not necessarily comprehensive. Regulations etc: Any reference to alterations to, or use of, any part of the property does not mean that any necessary planning, building regulations or other consent has been obtained. A buyer or lessee must find out by inspection or in other ways that these matters have been properly dealt with and that all information is correct.



MAYFAIR SQUARE

1 Mayfair Place, London W1J 8AJ, United Kingdom

+44 (0)207 184 9888 | info@mayfairsquare.co.uk | www.mayfairsquare.co.uk
