

PARK MANSIONS, KNIGHTSBRIDGE, LONDON

£2,800,000



MAYFAIR SQUARE

1 Mayfair Place, London W1J 8AJ, United Kingdom

+44 (0)207 184 9888 | info@mayfairsquare.co.uk | www.mayfairsquare.co.uk

PARK MANSIONS, KNIGHTSBRIDGE, LONDON

£2,800,000

PROPERTY DESCRIPTION

A stunning three-bedroom apartment in the heart of Knightsbridge.

This beautifully renovated 1,202 sq ft apartment is situated on the fifth floor of a prestigious portered residential building in Knightsbridge.

The spacious living area seamlessly blends into the dining space, complemented by a luxury integrated kitchen with a sleek breakfast bar. The apartment features a generous master bedroom with an en-suite bathroom, two additional double bedrooms, and a separate modern shower room.

Conveniently located just moments from Harrods and Hyde Park, this exceptional residence offers an unparalleled living experience in one of London's most desirable postcodes.

Arrange a private viewing today with our team at Mayfair Square.

Living in Knightsbridge

Knightsbridge is renowned for its luxury lifestyle and exclusive residential communities.

This vibrant neighbourhood is synonymous with sophistication, featuring world-class shopping, fine dining, and cultural landmarks. The iconic Harrods and Harvey Nichols are just steps away, offering a haven for luxury enthusiasts. Meanwhile, Sloane Street, one of the world's most exclusive shopping boulevards, is home to elite brands such as Graff, Prada, Berluti, and Cartier. For food connoisseurs, Knightsbridge boasts a remarkable selection of Michelin-starred restaurants, catering to the most discerning palates.

Beyond its retail and dining scene, Knightsbridge offers tranquil green spaces, with the expansive Hyde Park as its crown jewel. This 350-acre urban oasis features the Serpentine Lake and provides a serene retreat from city life.

Knightsbridge truly represents the pinnacle of luxury living in London, making it a globally coveted address.



MAYFAIR SQUARE

1 Mayfair Place, London W1J 8AJ, United Kingdom

+44 (0)207 184 9888 | info@mayfairsquare.co.uk | www.mayfairsquare.co.uk

PARK MANSIONS, KNIGHTSBRIDGE, LONDON

£2,800,000



MAYFAIR SQUARE

1 Mayfair Place, London W1J 8AJ, United Kingdom

+44 (0)207 184 9888 | info@mayfairsquare.co.uk | www.mayfairsquare.co.uk



MAYFAIR SQUARE

1 Mayfair Place, London W1J 8AJ, United Kingdom

+44 (0)207 184 9888 | info@mayfairsquare.co.uk | www.mayfairsquare.co.uk



MAYFAIR SQUARE

1 Mayfair Place, London W1J 8AJ, United Kingdom

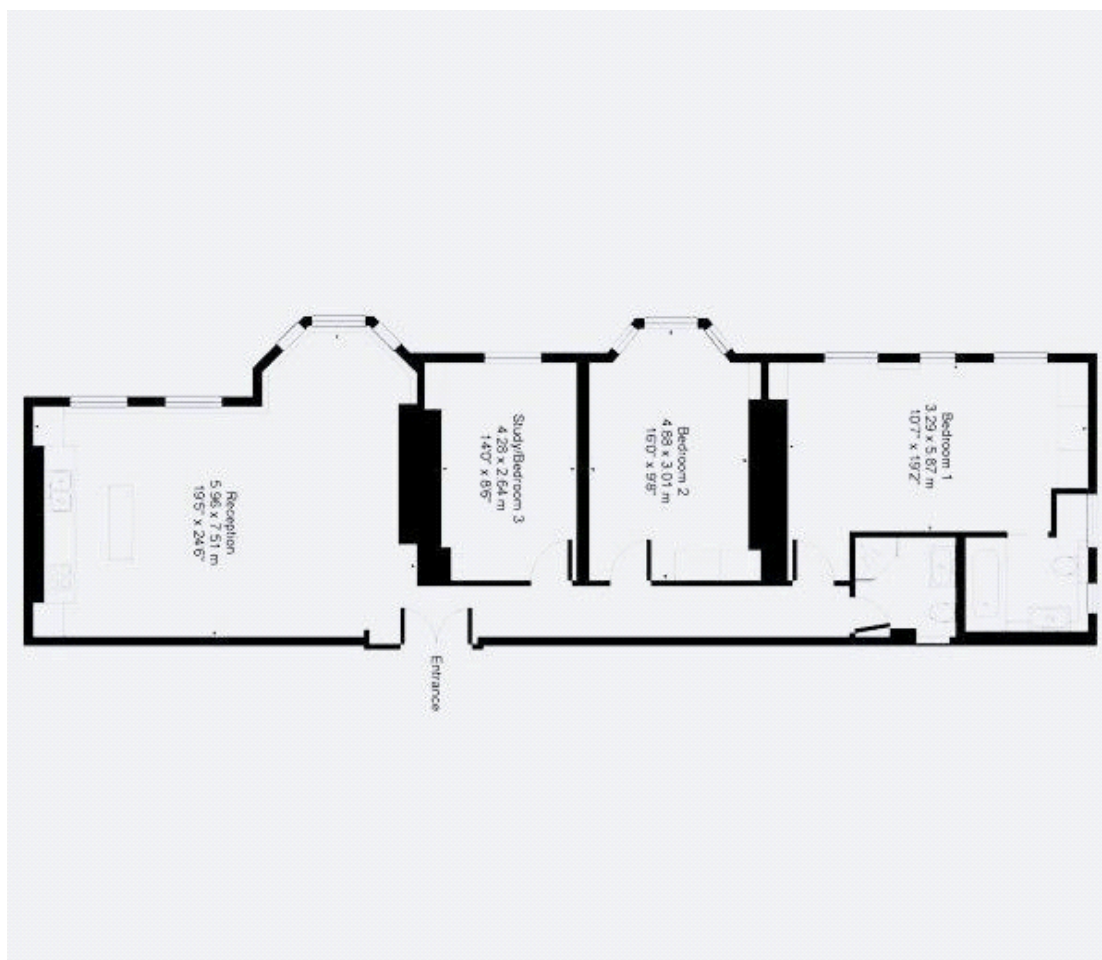
+44 (0)207 184 9888 | info@mayfairsquare.co.uk | www.mayfairsquare.co.uk



MAYFAIR SQUARE

1 Mayfair Place, London W1J 8AJ, United Kingdom

+44 (0)207 184 9888 | info@mayfairsquare.co.uk | www.mayfairsquare.co.uk



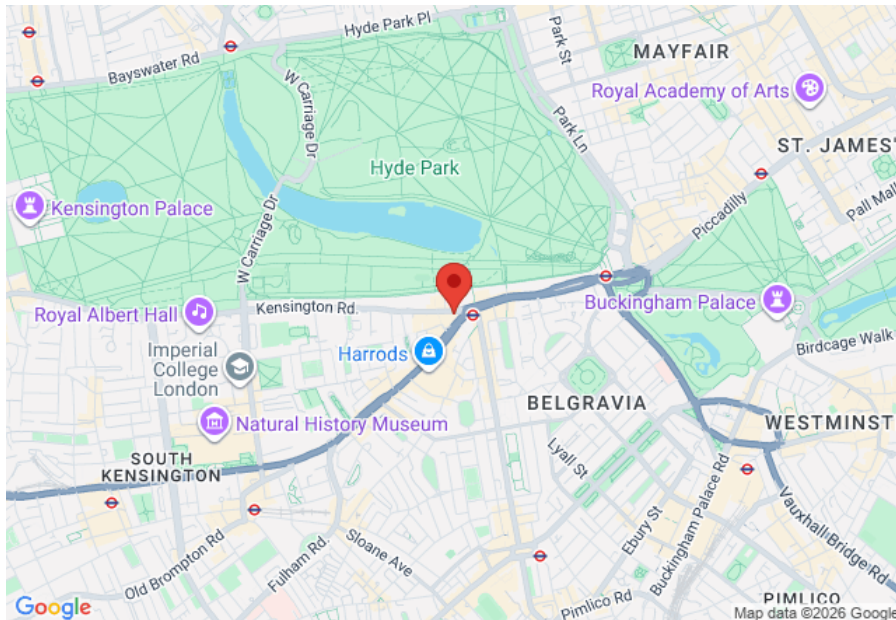
MAYFAIR SQUARE

1 Mayfair Place, London W1J 8AJ, United Kingdom

+44 (0)207 184 9888 | info@mayfairsquare.co.uk | www.mayfairsquare.co.uk

PARK MANSIONS, KNIGHTSBRIDGE, LONDON

£2,800,000



Energy Efficiency Rating		
	Current	Potential
Very energy efficient - lower running costs		
(92-100) A		
(81-91) B		
(69-80) C		
(55-68) D		
(39-54) E		
(21-38) F		
(1-20) G		
Not energy efficient - higher running costs		
England & Wales	EU Directive 2002/91/EC	

The energy efficiency rating is a measure of the overall efficiency of a home. The higher the rating the more energy efficient the home is and the lower the fuel bills will be.



MAYFAIR SQUARE

1 Mayfair Place, London W1J 8AJ, United Kingdom

+44 (0)207 184 9888 | info@mayfairsquare.co.uk | www.mayfairsquare.co.uk

PARK MANSIONS, KNIGHTSBRIDGE, LONDON

£2,800,000

FOR MORE INFORMATION PLEASE CONTACT US

Important Notice:

Particulars: These particulars are not an offer or contract, nor part of one. You should not rely on statements by Mayfair Square in the particulars or by word of mouth or in writing ("information") as being factually accurate about the property, its condition or its value. Neither Mayfair Square nor any joint agent has any authority to make any representations about the property, and accordingly any information given is entirely without responsibility on the part of the agents, seller(s), lessor(s) or landlord(s).

Any areas, measurements or distances are approximate. The text, photographs and plans are for guidance only and are not necessarily comprehensive. Regulations etc: Any reference to alterations to, or use of, any part of the property does not mean that any necessary planning, building regulations or other consent has been obtained. A buyer or lessee must find out by inspection or in other ways that these matters have been properly dealt with and that all information is correct.



MAYFAIR SQUARE

1 Mayfair Place, London W1J 8AJ, United Kingdom

+44 (0)207 184 9888 | info@mayfairsquare.co.uk | www.mayfairsquare.co.uk
