

DORSET MEWS, BELGRAVIA, LONDON
£4,250 PW



MAYFAIR SQUARE

1 Mayfair Place, London W1J 8AJ, United Kingdom

+44 (0)207 184 9888 | info@mayfairsquare.co.uk | www.mayfairsquare.co.uk

DORSET MEWS, BELGRAVIA, LONDON

£4,250 PW

PROPERTY DESCRIPTION

Stunning Three-Bedroom Luxury House in a Secure Private Gated Development in Belgravia.

A must-see, this exquisite three-bedroom residence is nestled within an exclusive and secure private gated development in the heart of Belgravia, offering unparalleled luxury, privacy, and peace of mind. The property is excellently maintained, ensuring a turnkey living experience in one of London's most prestigious locations.

Spanning 2,664 sq ft, this home is designed to the highest standards, featuring a spacious living area that opens onto a private balcony overlooking the courtyard. The grand master suite (23ft x 20ft) boasts a luxurious en-suite bathroom, while two additional lavish double bedrooms, both with en-suites, provide comfort and style.

Entertain effortlessly in the separate bar/dining room, or enjoy casual dining in the fully integrated eat-in kitchen. This exceptional home is further enhanced by underfloor heating, air conditioning, underground parking, and porter services, all within a meticulously maintained and highly secure development.

Key Features:

- * Exclusive & Secure Private Gated Mews in the Heart of Belgravia
- * Excellently Maintained Property for a Turnkey Living Experience
- * 2,664 sq ft of Luxurious Living Space
- * Grand 23ft x 20ft Master Suite with Indulgent En-Suite Bathroom
- * Two Additional Spacious Double Bedrooms, Both with En-Suites
- * Expansive Living Room Opening Onto a Private Balcony with Mews Views
- * Separate Bar/Dining Room – Perfect for Entertaining
- * Fully Integrated Eat-In Kitchen with Modern Finishes
- * Underfloor Heating & Air Conditioning Throughout
- * Underground Parking & Porter Services

Contact our team at Mayfair Square today to arrange a private viewing of this exceptional luxury home.

Living in Belgravia – A Prestigious London Enclave

Belgravia, one of London's most exclusive districts, is renowned for its grand architecture and refined charm. Nestled west of Buckingham Palace, it borders Knightsbridge and Chelsea. The area boasts vibrant shopping and dining, with Elizabeth Street, Motcomb Street, and Orange Square offering boutique shops and fine restaurants. Nearby, Harrods, Harvey Nichols, and Sloane Street provide luxury retail. For tranquility, Hyde Park's 350 acres and the Serpentine Lake are just a short stroll away. Belgravia also features elegant private garden squares like Belgrave Square, Chester Square, and Eaton Square, offering serene retreats.

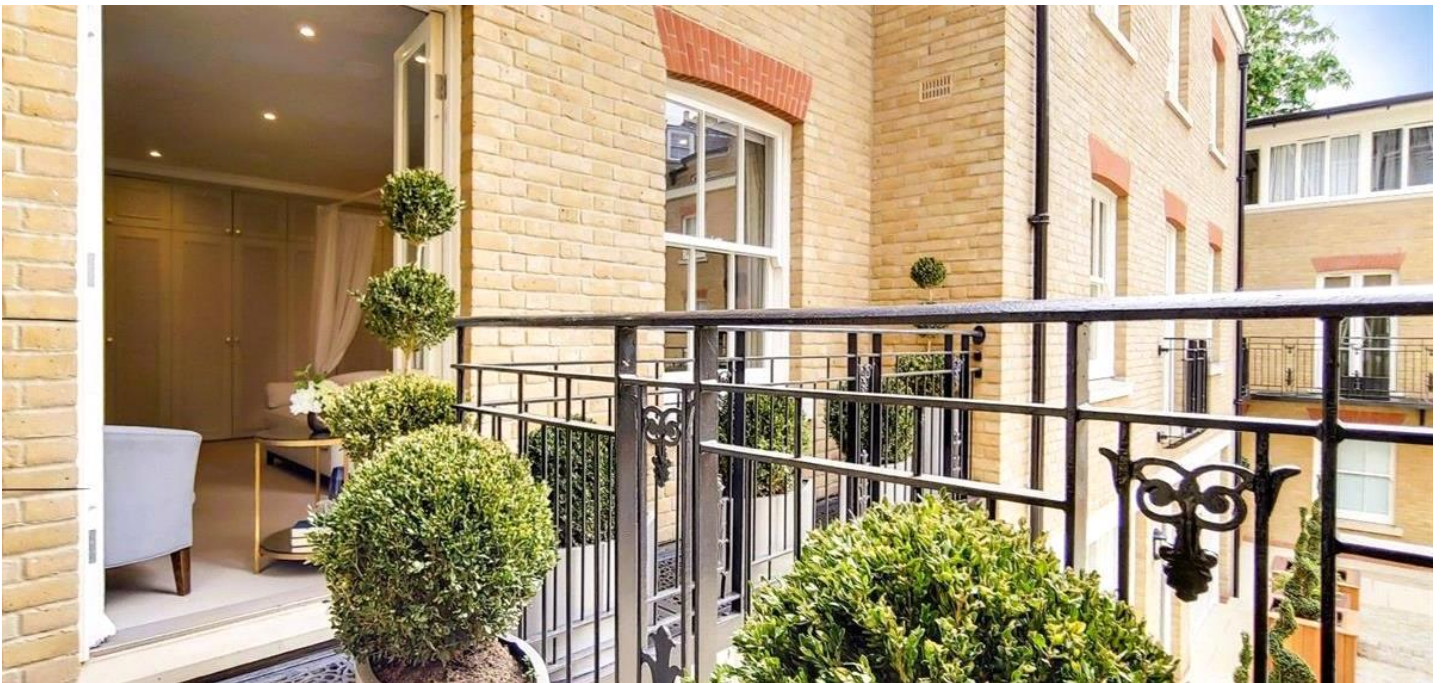


MAYFAIR SQUARE

1 Mayfair Place, London W1J 8AJ, United Kingdom

+44 (0)207 184 9888 | info@mayfairsquare.co.uk | www.mayfairsquare.co.uk

DORSET MEWS, BELGRAVIA, LONDON
£4,250 PW



MAYFAIR SQUARE

1 Mayfair Place, London W1J 8AJ, United Kingdom

+44 (0)207 184 9888 | info@mayfairsquare.co.uk | www.mayfairsquare.co.uk



MAYFAIR SQUARE

1 Mayfair Place, London W1J 8AJ, United Kingdom

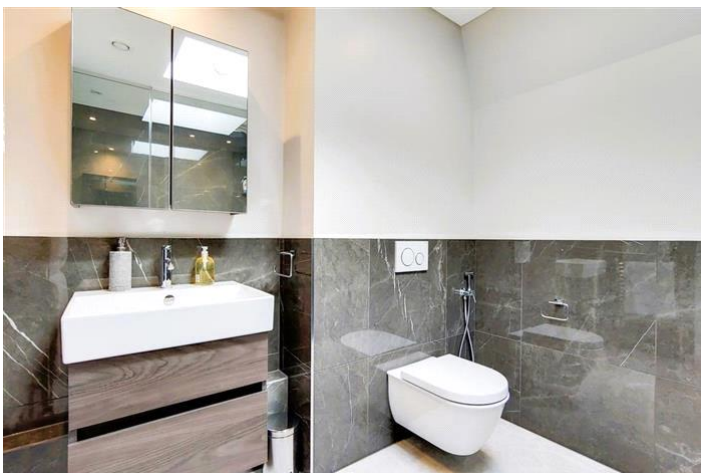
+44 (0)207 184 9888 | info@mayfairsquare.co.uk | www.mayfairsquare.co.uk



MAYFAIR SQUARE

1 Mayfair Place, London W1J 8AJ, United Kingdom

+44 (0)207 184 9888 | info@mayfairsquare.co.uk | www.mayfairsquare.co.uk



MAYFAIR SQUARE

1 Mayfair Place, London W1J 8AJ, United Kingdom

+44 (0)207 184 9888 | info@mayfairsquare.co.uk | www.mayfairsquare.co.uk



MAYFAIR SQUARE

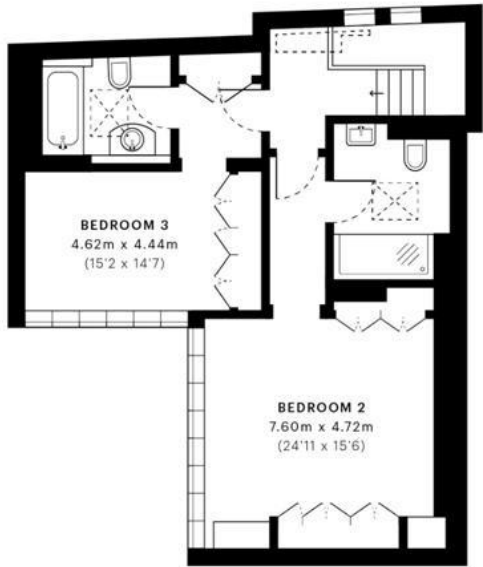
1 Mayfair Place, London W1J 8AJ, United Kingdom

+44 (0)207 184 9888 | info@mayfairsquare.co.uk | www.mayfairsquare.co.uk

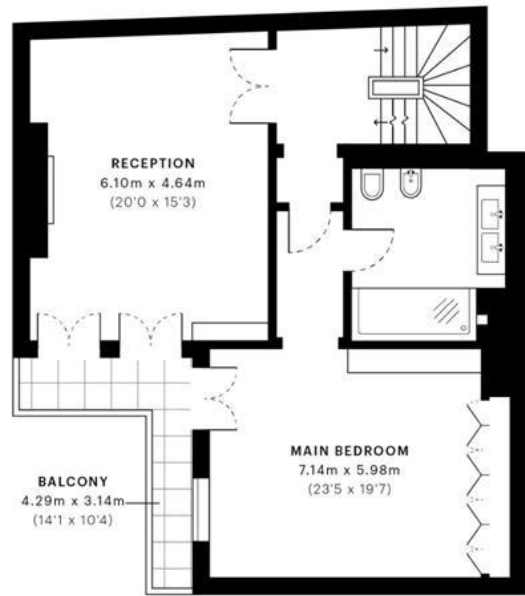
Dorset Mews, SW1X

GROSS INTERNAL AREA

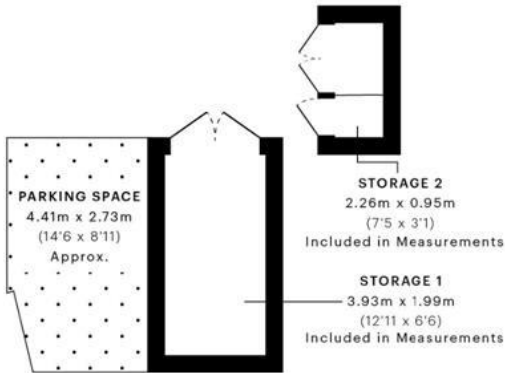
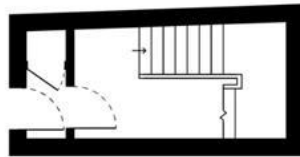
247.53 sqm / 2664.39 sqft



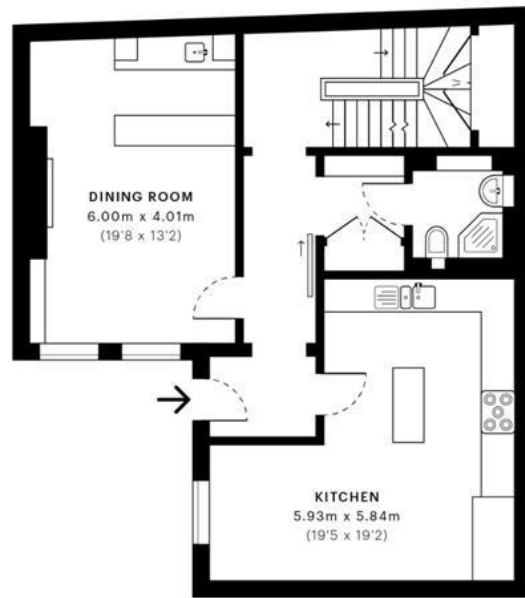
— Second Floor



— First Floor



— Lower Ground Floor



— Ground Floor



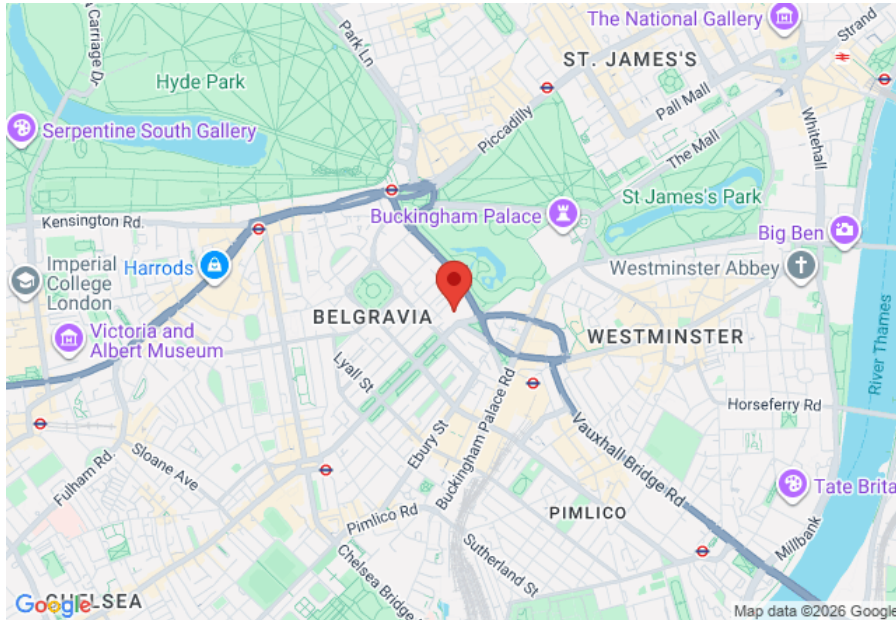
MAYFAIR SQUARE

1 Mayfair Place, London W1J 8AJ, United Kingdom

+44 (0)207 184 9888 | info@mayfairsquare.co.uk | www.mayfairsquare.co.uk

DORSET MEWS, BELGRAVIA, LONDON

£4,250 PW



Energy Efficiency Rating		
	Current	Potential
Very energy efficient - lower running costs		
(92-100) A		
(81-91) B		
(69-80) C		
(55-68) D	68	78
(39-54) E		
(21-38) F		
(1-20) G		
Not energy efficient - higher running costs		
England & Wales	EU Directive 2002/91/EC	

The energy efficiency rating is a measure of the overall efficiency of a home. The higher the rating the more energy efficient the home is and the lower the fuel bills will be.



MAYFAIR SQUARE

1 Mayfair Place, London W1J 8AJ, United Kingdom

+44 (0)207 184 9888 | info@mayfairsquare.co.uk | www.mayfairsquare.co.uk

DORSET MEWS, BELGRAVIA, LONDON

£4,250 PW

FOR MORE INFORMATION PLEASE CONTACT US

Important Notice:

Particulars: These particulars are not an offer or contract, nor part of one. You should not rely on statements by Mayfair Square in the particulars or by word of mouth or in writing ("information") as being factually accurate about the property, its condition or its value. Neither Mayfair Square nor any joint agent has any authority to make any representations about the property, and accordingly any information given is entirely without responsibility on the part of the agents, seller(s), lessor(s) or landlord(s).

Any areas, measurements or distances are approximate. The text, photographs and plans are for guidance only and are not necessarily comprehensive. Regulations etc: Any reference to alterations to, or use of, any part of the property does not mean that any necessary planning, building regulations or other consent has been obtained. A buyer or lessee must find out by inspection or in other ways that these matters have been properly dealt with and that all information is correct.



MAYFAIR SQUARE

1 Mayfair Place, London W1J 8AJ, United Kingdom

+44 (0)207 184 9888 | info@mayfairsquare.co.uk | www.mayfairsquare.co.uk
