

PARK VILLAGE EAST, REGENT'S PARK, LONDON  
£900,000



**MAYFAIR SQUARE**

1 Mayfair Place, London W1J 8AJ, United Kingdom

+44 (0)207 184 9888 | [info@mayfairsquare.co.uk](mailto:info@mayfairsquare.co.uk) | [www.mayfairsquare.co.uk](http://www.mayfairsquare.co.uk)

# PARK VILLAGE EAST, REGENT'S PARK, LONDON

£900,000

---

## PROPERTY DESCRIPTION

Excellent Two-Bedroom Apartment with Private Patio near Regent's Park.

Recently fully refurbished to an exceptional standard, this stunning two-bedroom apartment offers contemporary living in a prime location on the prestigious Crown Estate, positioned on the edge of Regent's Park.

Situated in a small purpose-built block spanning just two floors, this 740 sq ft apartment has been thoughtfully designed to blend modern style with comfort. It features a bright and spacious living area, a fully fitted modern kitchen, two beautifully finished bedrooms, and two sleek, contemporary bathrooms.

One of the standout features of this property is its private patio, providing a secluded outdoor space to relax and unwind. Additionally, residents have access to stunning communal gardens, offering a tranquil retreat in the heart of the city.

### Key Features:

- \* Fully Refurbished to a High Standard
- \* Private Patio & Access to Stunning Communal Gardens
- \* Situated in a Small Purpose-Built Block Over Two Floors
- \* Prestigious Crown Estate Location on the Edge of Regent's Park
- \* Two Bedrooms & Two Bathrooms
- \* Bright & Spacious Living Area
- \* Fully Fitted Modern Kitchen
- \* Well-Maintained Residential Building
- \* Prime Location – Walking Distance to Regent's Park

This newly refurbished apartment offers the perfect blend of modern elegance, exclusivity, and private outdoor space, making it an ideal home for professionals, couples, or small families.

Contact us today to arrange a viewing of this exceptional apartment.



## MAYFAIR SQUARE

1 Mayfair Place, London W1J 8AJ, United Kingdom

+44 (0)207 184 9888 | [info@mayfairsquare.co.uk](mailto:info@mayfairsquare.co.uk) | [www.mayfairsquare.co.uk](http://www.mayfairsquare.co.uk)

---

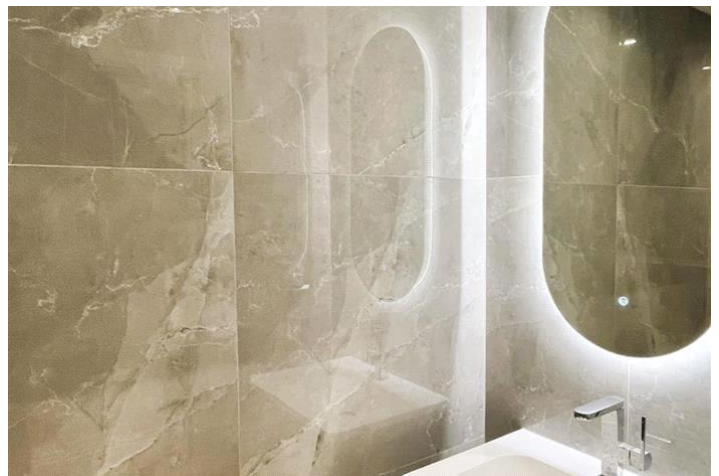
PARK VILLAGE EAST, REGENT'S PARK, LONDON  
£900,000



**MAYFAIR SQUARE**

1 Mayfair Place, London W1J 8AJ, United Kingdom

+44 (0)207 184 9888 | [info@mayfairsquare.co.uk](mailto:info@mayfairsquare.co.uk) | [www.mayfairsquare.co.uk](http://www.mayfairsquare.co.uk)



## MAYFAIR SQUARE

1 Mayfair Place, London W1J 8AJ, United Kingdom

+44 (0)207 184 9888 | [info@mayfairsquare.co.uk](mailto:info@mayfairsquare.co.uk) | [www.mayfairsquare.co.uk](http://www.mayfairsquare.co.uk)



## MAYFAIR SQUARE

1 Mayfair Place, London W1J 8AJ, United Kingdom

+44 (0)207 184 9888 | [info@mayfairsquare.co.uk](mailto:info@mayfairsquare.co.uk) | [www.mayfairsquare.co.uk](http://www.mayfairsquare.co.uk)



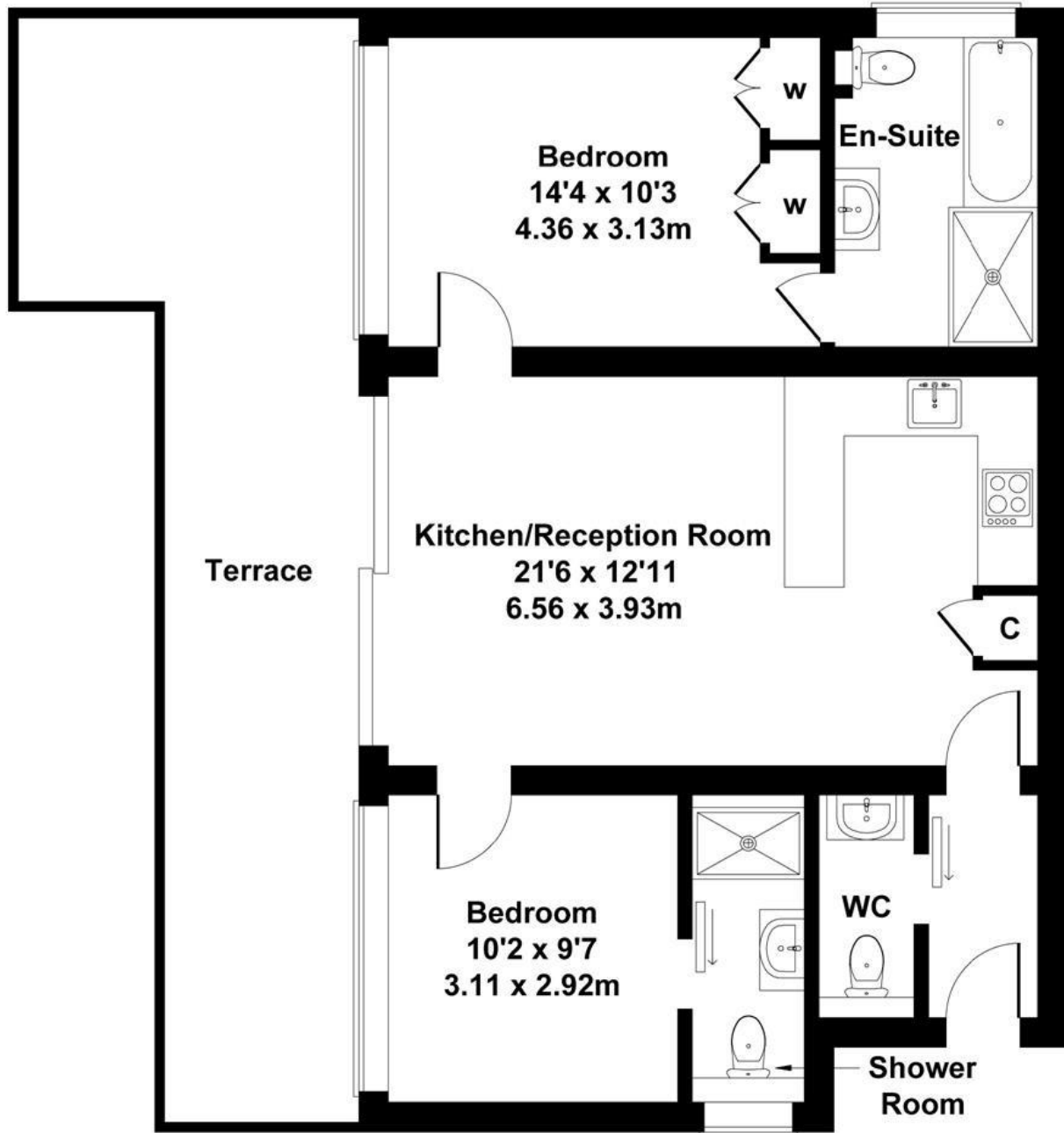
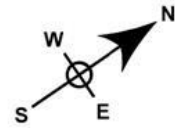
# MAYFAIR SQUARE

1 Mayfair Place, London W1J 8AJ, United Kingdom

+44 (0)207 184 9888 | [info@mayfairsquare.co.uk](mailto:info@mayfairsquare.co.uk) | [www.mayfairsquare.co.uk](http://www.mayfairsquare.co.uk)

# Park Village East

Approximate Gross Internal Area  
743 sq ft - 69 sq m



Not to Scale.

For Illustrative Purposes Only.



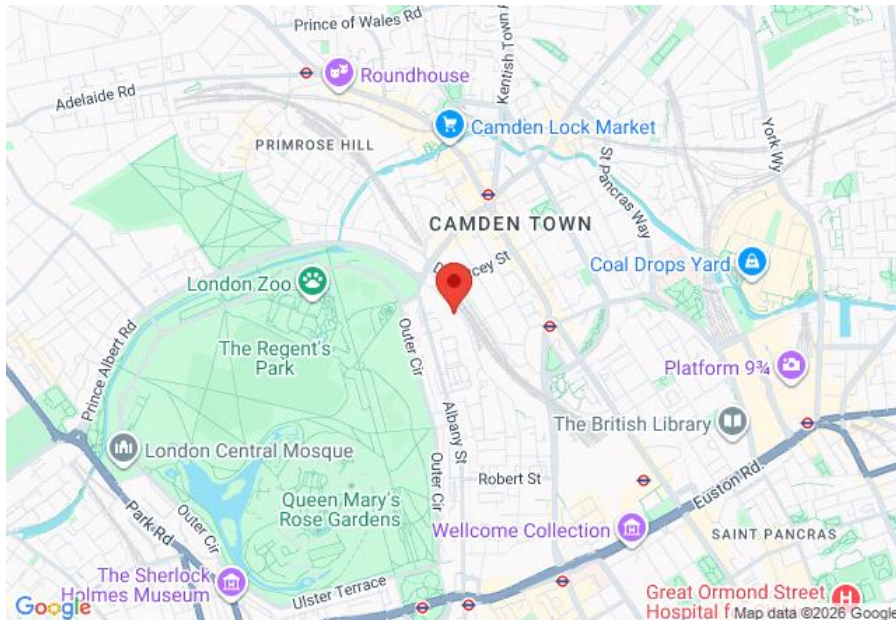
## MAYFAIR SQUARE

1 Mayfair Place, London W1J 8AJ, United Kingdom

+44 (0)207 184 9888 | [info@mayfairsquare.co.uk](mailto:info@mayfairsquare.co.uk) | [www.mayfairsquare.co.uk](http://www.mayfairsquare.co.uk)

# PARK VILLAGE EAST, REGENT'S PARK, LONDON

## £900,000



Energy Efficiency Rating		
	Current	Potential
Very energy efficient - lower running costs		
(92-100) <b>A</b>		
(81-91) <b>B</b>		
(69-80) <b>C</b>		75
(55-68) <b>D</b>		
(39-54) <b>E</b>	42	
(21-38) <b>F</b>		
(1-20) <b>G</b>		
Not energy efficient - higher running costs		
<b>England &amp; Wales</b>	EU Directive 2002/91/EC	

The energy efficiency rating is a measure of the overall efficiency of a home. The higher the rating the more energy efficient the home is and the lower the fuel bills will be.



## MAYFAIR SQUARE

1 Mayfair Place, London W1J 8AJ, United Kingdom

+44 (0)207 184 9888 | info@mayfairsquare.co.uk | www.mayfairsquare.co.uk

# PARK VILLAGE EAST, REGENT'S PARK, LONDON

## £900,000

---

FOR MORE INFORMATION PLEASE CONTACT US

### Important Notice:

Particulars: These particulars are not an offer or contract, nor part of one. You should not rely on statements by Mayfair Square in the particulars or by word of mouth or in writing ("information") as being factually accurate about the property, its condition or its value. Neither Mayfair Square nor any joint agent has any authority to make any representations about the property, and accordingly any information given is entirely without responsibility on the part of the agents, seller(s), lessor(s) or landlord(s).

Any areas, measurements or distances are approximate. The text, photographs and plans are for guidance only and are not necessarily comprehensive. Regulations etc: Any reference to alterations to, or use of, any part of the property does not mean that any necessary planning, building regulations or other consent has been obtained. A buyer or lessee must find out by inspection or in other ways that these matters have been properly dealt with and that all information is correct.



## MAYFAIR SQUARE

1 Mayfair Place, London W1J 8AJ, United Kingdom

+44 (0)207 184 9888 | [info@mayfairsquare.co.uk](mailto:info@mayfairsquare.co.uk) | [www.mayfairsquare.co.uk](http://www.mayfairsquare.co.uk)

---