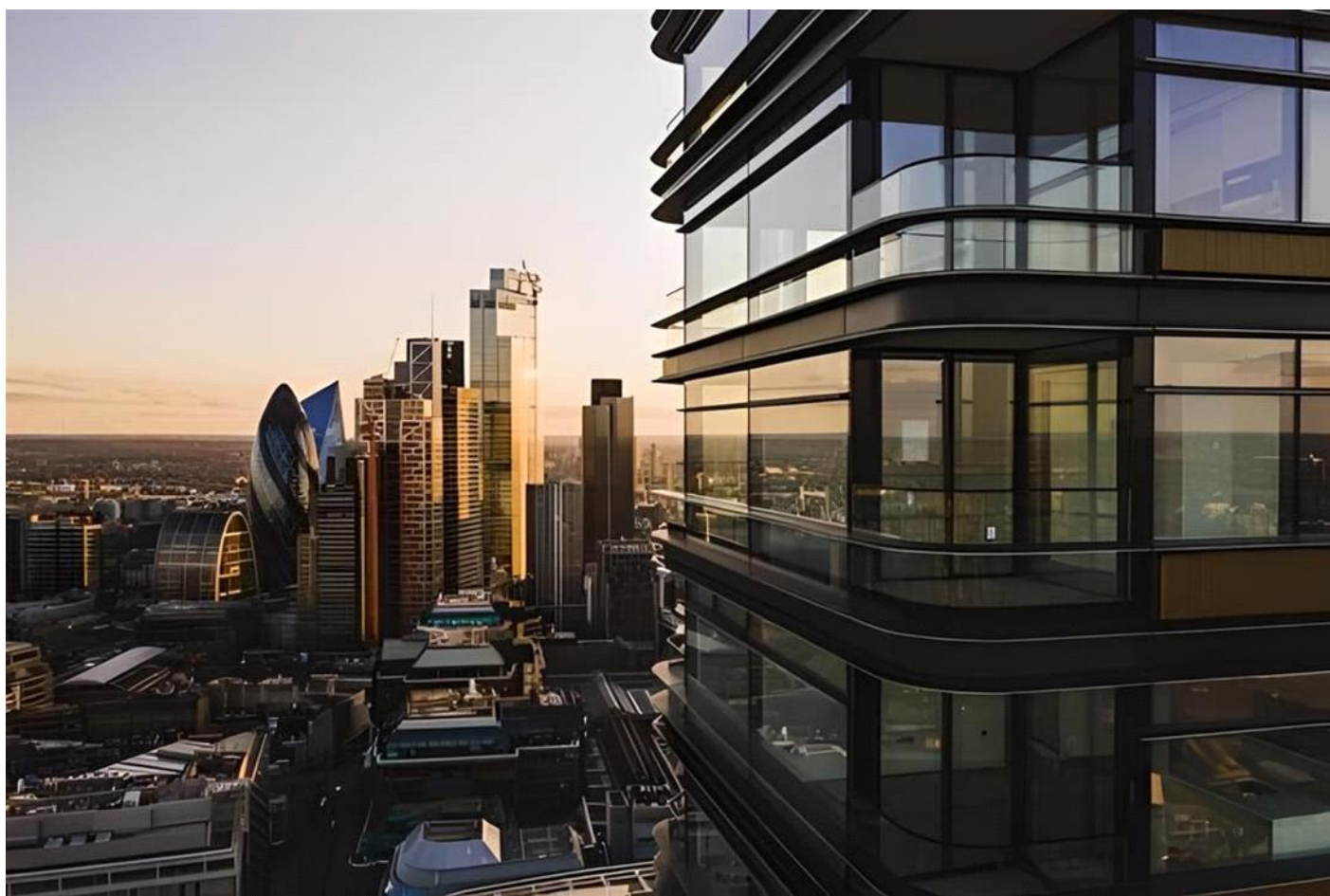


WORSHIP STREET, SHOREDITCH, LONDON EC2

£2,860,000



MAYFAIR SQUARE

1 Mayfair Place, London W1J 8AJ, United Kingdom

+44 (0)207 184 9888 | info@mayfairsquare.co.uk | www.mayfairsquare.co.uk

WORSHIP STREET, SHOREDITCH, LONDON EC2

£2,860,000

PROPERTY DESCRIPTION

Experience luxury living in this beautiful 2-bedroom penthouse apartment with a terrace on the 47th floor. Floor-to-ceiling windows bathe the interior in radiant natural light while offering breathtaking views across London that enhance the overall beauty of the space.

Set within this iconic 50-story residential tower in the heart of Shoreditch, one of London's most vibrant neighbourhoods, this apartment offers an unparalleled opportunity to indulge in a lifestyle of luxury.

This lateral apartment spans over 1369 square feet of indoor space, coupled with 205 square feet of outdoor terrace.

Experience an unparalleled level of privacy and comfort in this thoughtfully crafted apartment, featuring two generously sized double bedrooms and two bathrooms. The master bedroom is a sanctuary of indulgence, with beautiful wardrobe and an en-suite bathroom that exudes relaxation with a rejuvenating rain shower, a freestanding bathtub, and elegant his and hers washbasins. The second bedrooms offers high-quality fixtures and fittings, ensuring a heightened sense of refinement and convenience for residents.

A fully equipped designer kitchen awaits, complete with integrated appliances and sleek cabinetry, ensuring culinary endeavours are executed with ease and finesse.

Undoubtedly the crowning jewel of this remarkable apartment is its private terrace, providing a captivating backdrop of London's skyline. This expansive outdoor oasis invites residents to bask in tranquillity, relish in sun-soaked moments, or entertain guests, the terrace offers the pinnacle of luxury and comfort, allowing residents to revel in the breathtaking views in unparalleled style.

In addition to this luxurious apartment, this iconic residential tower offers residents five star living amenities, a gym and spa, a screening room, a lap pool, a 24-hour concierge, and a tree-lined piazza with shops, restaurants, and bars.

Please contact our team at Mayfair Square to arrange a viewing of this exceptional apartment.

Please note photographs are CGI's (Computer-generated imagery) and only for guidance.



MAYFAIR SQUARE

1 Mayfair Place, London W1J 8AJ, United Kingdom

+44 (0)207 184 9888 | info@mayfairsquare.co.uk | www.mayfairsquare.co.uk

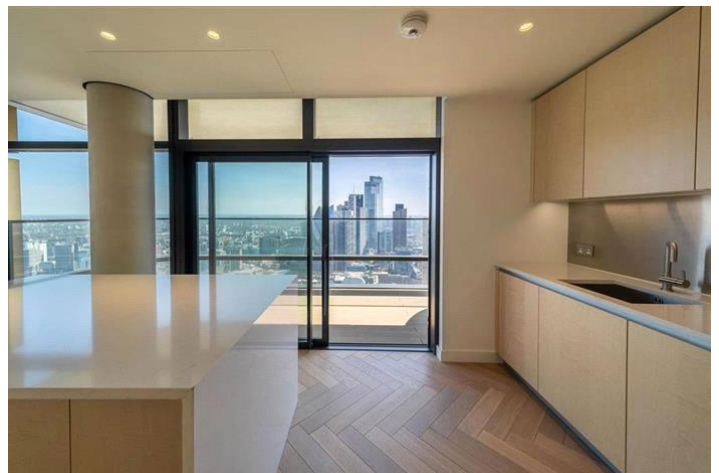
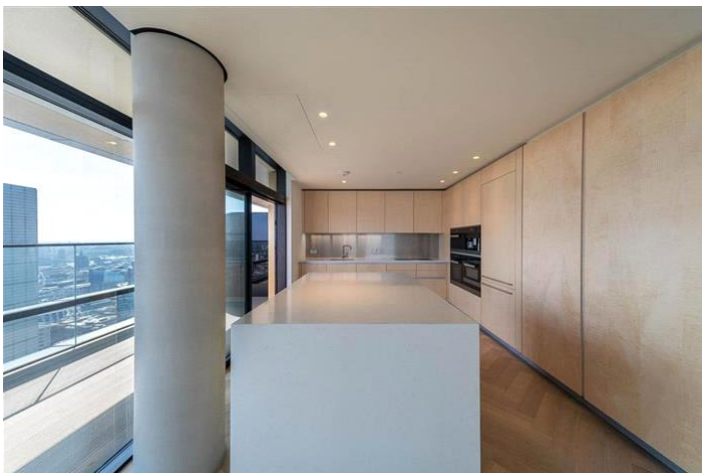
WORSHIP STREET, SHOREDITCH, LONDON EC2
£2,860,000



MAYFAIR SQUARE

1 Mayfair Place, London W1J 8AJ, United Kingdom

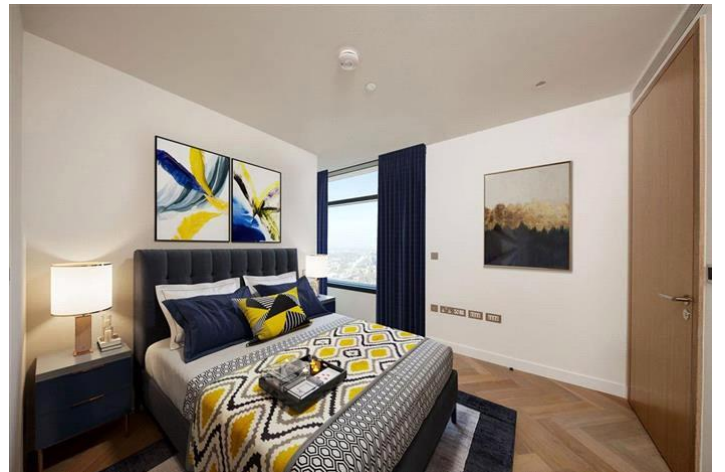
+44 (0)207 184 9888 | info@mayfairsquare.co.uk | www.mayfairsquare.co.uk



MAYFAIR SQUARE

1 Mayfair Place, London W1J 8AJ, United Kingdom

+44 (0)207 184 9888 | info@mayfairsquare.co.uk | www.mayfairsquare.co.uk



MAYFAIR SQUARE

1 Mayfair Place, London W1J 8AJ, United Kingdom

+44 (0)207 184 9888 | info@mayfairsquare.co.uk | www.mayfairsquare.co.uk



MAYFAIR SQUARE

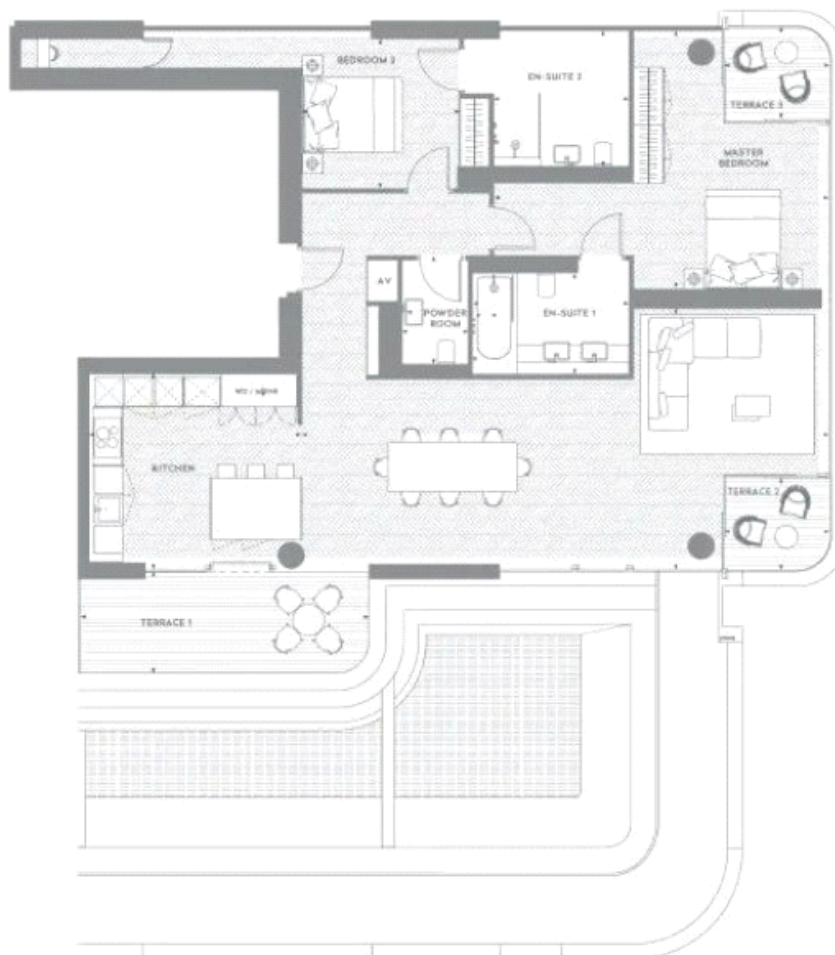
1 Mayfair Place, London W1J 8AJ, United Kingdom

+44 (0)207 184 9888 | info@mayfairsquare.co.uk | www.mayfairsquare.co.uk

2 Beds / 2 Baths

Apartment: 1,369 Sqft

Terraces: 205 Sqft



MAYFAIR SQUARE

1 Mayfair Place, London W1J 8AJ, United Kingdom

+44 (0)207 184 9888 | info@mayfairsquare.co.uk | www.mayfairsquare.co.uk

WORSHIP STREET, SHOREDITCH, LONDON EC2

£2,860,000



MAYFAIR SQUARE

1 Mayfair Place, London W1J 8AJ, United Kingdom

+44 (0)207 184 9888 | info@mayfairsquare.co.uk | www.mayfairsquare.co.uk

WORSHIP STREET, SHOREDITCH, LONDON EC2

£2,860,000

FOR MORE INFORMATION PLEASE CONTACT US

Important Notice:

Particulars: These particulars are not an offer or contract, nor part of one. You should not rely on statements by Mayfair Square in the particulars or by word of mouth or in writing ("information") as being factually accurate about the property, its condition or its value. Neither Mayfair Square nor any joint agent has any authority to make any representations about the property, and accordingly any information given is entirely without responsibility on the part of the agents, seller(s), lessor(s) or landlord(s).

Any areas, measurements or distances are approximate. The text, photographs and plans are for guidance only and are not necessarily comprehensive. Regulations etc: Any reference to alterations to, or use of, any part of the property does not mean that any necessary planning, building regulations or other consent has been obtained. A buyer or lessee must find out by inspection or in other ways that these matters have been properly dealt with and that all information is correct.



MAYFAIR SQUARE

1 Mayfair Place, London W1J 8AJ, United Kingdom

+44 (0)207 184 9888 | info@mayfairsquare.co.uk | www.mayfairsquare.co.uk
