

PORTMAN SQUARE, MARYLEBONE, LONDON W1

£1,100 PW



MAYFAIR SQUARE

1 Mayfair Place, London W1J 8AJ, United Kingdom

+44 (0)207 184 9888 | info@mayfairsquare.co.uk | www.mayfairsquare.co.uk

PORTMAN SQUARE, MARYLEBONE, LONDON W1

£1,100 PW

PROPERTY DESCRIPTION

An excellent two-bedroom apartment situated within a well-maintained residential building on Portman Square.

The apartment boasts an abundance of natural light and features a reception room that seamlessly incorporates a dedicated dining area, providing a versatile space for relaxation and entertaining. It offers two spacious double bedrooms, one bathroom thoughtfully designed with ample storage solutions for a clutter-free living environment, and a modern kitchen.

Situated on the north side of Portman Square, Fifteen Portman Square is a desirable 1930s Art Deco building, thoughtfully designed for modern convenience. The property offers exceptional security and exclusive access to the private Portman Square gardens, which include a tennis court.

Living in Marylebone

Marylebone Village, known for its period architecture and attractive green spaces, offers a plethora of shopping, dining, and lifestyle experiences. Residents can enjoy a range of cultural and lifestyle activities, including art exhibitions, exercise classes, masterclasses, and promotions hosted by local shops and restaurants. The vibrant community also organizes major events such as the Marylebone Food Festival, the Marylebone Design District, the Marylebone Summer Festival, and the Marylebone Christmas Lights.



MAYFAIR SQUARE

1 Mayfair Place, London W1J 8AJ, United Kingdom

+44 (0)207 184 9888 | info@mayfairsquare.co.uk | www.mayfairsquare.co.uk

PORTMAN SQUARE, MARYLEBONE, LONDON W1
£1,100 PW



MAYFAIR SQUARE

1 Mayfair Place, London W1J 8AJ, United Kingdom

+44 (0)207 184 9888 | info@mayfairsquare.co.uk | www.mayfairsquare.co.uk



MAYFAIR SQUARE

1 Mayfair Place, London W1J 8AJ, United Kingdom

+44 (0)207 184 9888 | info@mayfairsquare.co.uk | www.mayfairsquare.co.uk



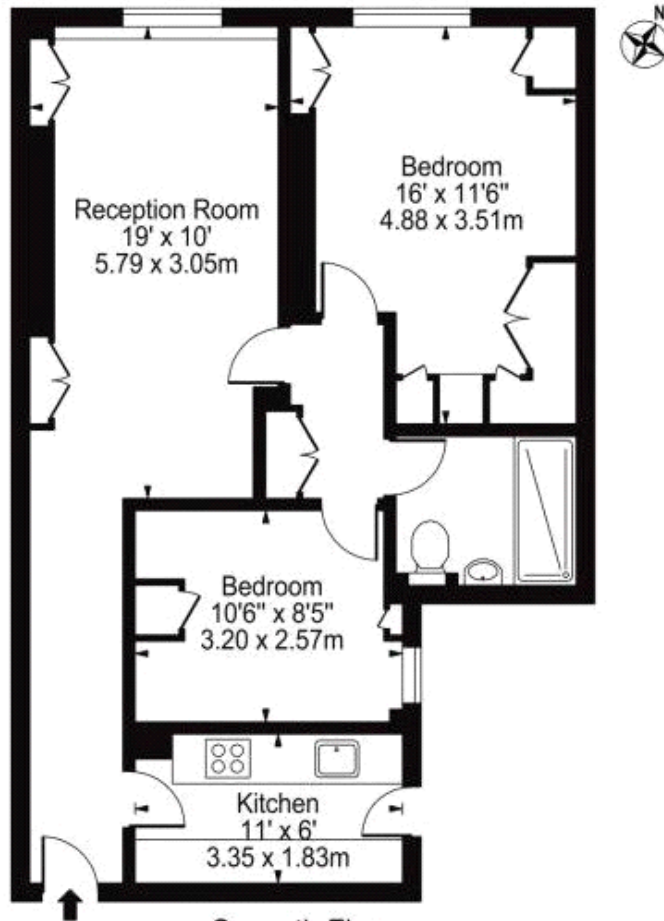
MAYFAIR SQUARE

1 Mayfair Place, London W1J 8AJ, United Kingdom

+44 (0)207 184 9888 | info@mayfairsquare.co.uk | www.mayfairsquare.co.uk

Portman Square, W1

Approx. Gross Internal Area 675 Sq Ft - 62.71 Sq M



Seventh Floor

For Illustration Purposes Only - Not To Scale



MAYFAIR SQUARE


1 Mayfair Place, London W1J 8AJ, United Kingdom

+44 (0)207 184 9888 | info@mayfairsquare.co.uk | www.mayfairsquare.co.uk

PORTMAN SQUARE, MARYLEBONE, LONDON W1

£1,100 PW



Energy Efficiency Rating		
	Current	Potential
Very energy efficient - lower running costs		
(92-100) A		
(81-91) B		84
(69-80) C	74	
(55-68) D		
(39-54) E		
(21-38) F		
(1-20) G		
Not energy efficient - higher running costs		
England & Wales	EU Directive 2002/91/EC 	

The energy efficiency rating is a measure of the overall efficiency of a home. The higher the rating the more energy efficient the home is and the lower the fuel bills will be.



MAYFAIR SQUARE

1 Mayfair Place, London W1J 8AJ, United Kingdom

+44 (0)207 184 9888 | info@mayfairsquare.co.uk | www.mayfairsquare.co.uk

PORTMAN SQUARE, MARYLEBONE, LONDON W1

£1,100 PW

FOR MORE INFORMATION PLEASE CONTACT US

Important Notice:

Particulars: These particulars are not an offer or contract, nor part of one. You should not rely on statements by Mayfair Square in the particulars or by word of mouth or in writing ("information") as being factually accurate about the property, its condition or its value. Neither Mayfair Square nor any joint agent has any authority to make any representations about the property, and accordingly any information given is entirely without responsibility on the part of the agents, seller(s), lessor(s) or landlord(s).

Any areas, measurements or distances are approximate. The text, photographs and plans are for guidance only and are not necessarily comprehensive. Regulations etc: Any reference to alterations to, or use of, any part of the property does not mean that any necessary planning, building regulations or other consent has been obtained. A buyer or lessee must find out by inspection or in other ways that these matters have been properly dealt with and that all information is correct.



MAYFAIR SQUARE

1 Mayfair Place, London W1J 8AJ, United Kingdom

+44 (0)207 184 9888 | info@mayfairsquare.co.uk | www.mayfairsquare.co.uk
