

NORTH AUDLEY STREET, MAYFAIR, LONDON W1

£7,500 PW



**MAYFAIR SQUARE**

1 Mayfair Place, London W1J 8AJ, United Kingdom

+44 (0)207 184 9888 | [info@mayfairsquare.co.uk](mailto:info@mayfairsquare.co.uk) | [www.mayfairsquare.co.uk](http://www.mayfairsquare.co.uk)

# NORTH AUDLEY STREET, MAYFAIR, LONDON W1

## £7,500 PW

---

### PROPERTY DESCRIPTION

A very special maisonette located on one of the most sought-after streets in Mayfair.

This attractive Netherlandish, gabled building, which was once a vicarage, was designed by Sir Arthur Blomfield in 1887.

It is located in the exclusive area of Mayfair, North Audley Street, close to Grosvenor Square and Selfridges department store.

The apartment has two floors. On the ground floor, there is an opulent open-plan kitchen and living room that leads to a conservatory with a garden view. On the first floor, there is a 30ft drawing room with a 3 meter ceiling height and balcony overlooking Green Street, a master bedroom with a separate walk-in wardrobe and ensuite bathroom, and two additional bedrooms, one double and one twin.

Please note that the listed price is for a long-term stay of at least 12 months. For shorter stays, the rate starts at £1,600 per night and may vary depending on the season.

### Living in Mayfair

Synonymous with luxury and one of the wealthiest places to live in London.

Mayfair is known for its beautiful period architecture, cosmopolitan restaurants, 5-star hotels, and gentleman's clubs as well as its art galleries, auction houses, wine merchants, and auction houses.

### Shopping and Restaurants in Mayfair

You can find some of the most exclusive restaurants, swanky bars and designer shops in Mayfair.

You can find some of the most exclusive brands in Mayfair, from Louis Vuitton, Gucci, Bulgari, Chanel, Hermes, De Beers, Graff to Rolex. Mayfair also has its own luxury department store Fortnum & Mason.

Mayfair is a small area, yet it has some of the best Michelin-starred restaurants run by world-famous chefs.

### Parks & Green Spaces

Mayfair is bounded on two sides by parks, Hyde park with over 350 acres of green space and Green Park.

Grosvenor Square and Mount Street Gardens are situated in the heart of Mayfair and are favourite for local residents.

Garden details: Private Garden

---



## MAYFAIR SQUARE

1 Mayfair Place, London W1J 8AJ, United Kingdom

+44 (0)207 184 9888 | [info@mayfairsquare.co.uk](mailto:info@mayfairsquare.co.uk) | [www.mayfairsquare.co.uk](http://www.mayfairsquare.co.uk)

---

NORTH AUDLEY STREET, MAYFAIR, LONDON W1  
£7,500 PW



**MAYFAIR SQUARE**

1 Mayfair Place, London W1J 8AJ, United Kingdom

+44 (0)207 184 9888 | [info@mayfairsquare.co.uk](mailto:info@mayfairsquare.co.uk) | [www.mayfairsquare.co.uk](http://www.mayfairsquare.co.uk)



## MAYFAIR SQUARE

1 Mayfair Place, London W1J 8AJ, United Kingdom

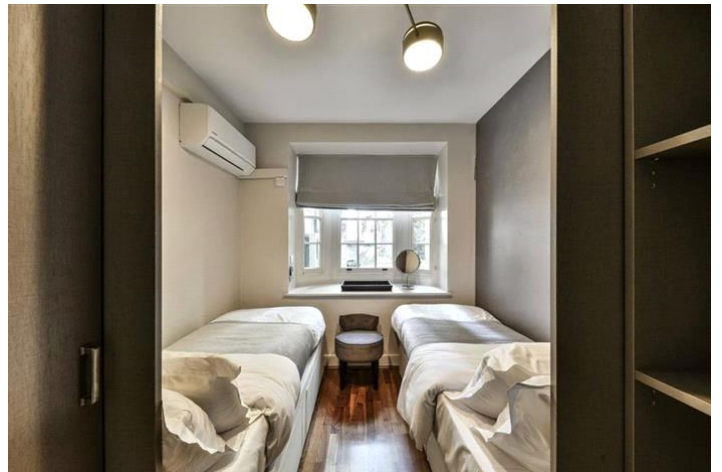
+44 (0)207 184 9888 | [info@mayfairsquare.co.uk](mailto:info@mayfairsquare.co.uk) | [www.mayfairsquare.co.uk](http://www.mayfairsquare.co.uk)



## MAYFAIR SQUARE

1 Mayfair Place, London W1J 8AJ, United Kingdom

+44 (0)207 184 9888 | [info@mayfairsquare.co.uk](mailto:info@mayfairsquare.co.uk) | [www.mayfairsquare.co.uk](http://www.mayfairsquare.co.uk)



## MAYFAIR SQUARE

1 Mayfair Place, London W1J 8AJ, United Kingdom

+44 (0)207 184 9888 | [info@mayfairsquare.co.uk](mailto:info@mayfairsquare.co.uk) | [www.mayfairsquare.co.uk](http://www.mayfairsquare.co.uk)



# MAYFAIR SQUARE

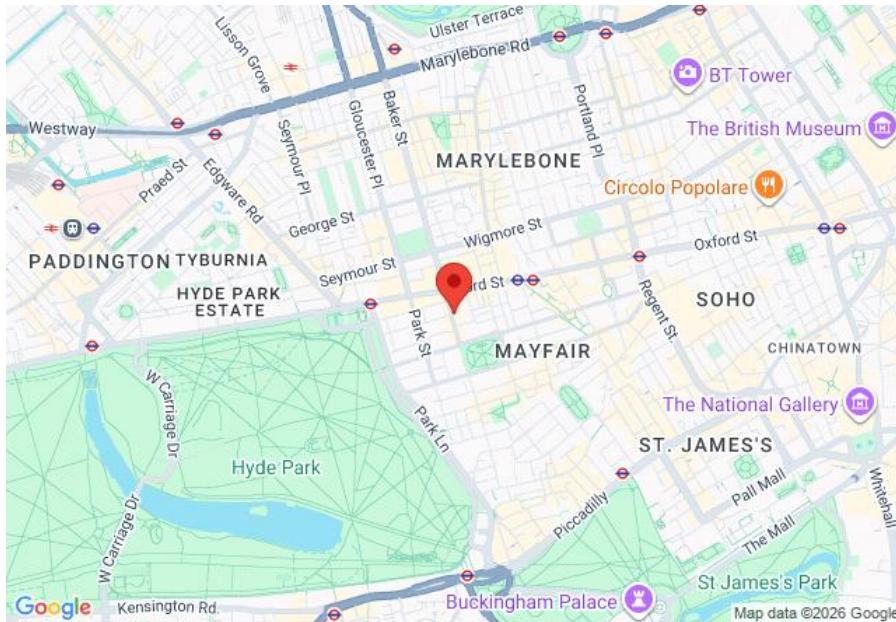
1 Mayfair Place, London W1J 8AJ, United Kingdom

+44 (0)207 184 9888 | [info@mayfairsquare.co.uk](mailto:info@mayfairsquare.co.uk) | [www.mayfairsquare.co.uk](http://www.mayfairsquare.co.uk)

---

# NORTH AUDLEY STREET, MAYFAIR, LONDON W1

## £7,500 PW



Energy Efficiency Rating		
	Current	Potential
Very energy efficient - lower running costs		
(92-100) <b>A</b>		
(81-91) <b>B</b>		
(69-80) <b>C</b>		
(55-68) <b>D</b>		
(39-54) <b>E</b>	<b>56</b>	
(21-38) <b>F</b>		
(1-20) <b>G</b>		
Not energy efficient - higher running costs		
		<b>71</b>

**England & Wales** EU Directive 2002/91/EC

The energy efficiency rating is a measure of the overall efficiency of a home. The higher the rating the more energy efficient the home is and the lower the fuel bills will be.



## MAYFAIR SQUARE

1 Mayfair Place, London W1J 8AJ, United Kingdom

+44 (0)207 184 9888 | info@mayfairsquare.co.uk | www.mayfairsquare.co.uk

NORTH AUDLEY STREET, MAYFAIR, LONDON W1  
£7,500 PW

---

FOR MORE INFORMATION PLEASE CONTACT US

Important Notice:

Particulars: These particulars are not an offer or contract, nor part of one. You should not rely on statements by Mayfair Square in the particulars or by word of mouth or in writing ("information") as being factually accurate about the property, its condition or its value. Neither Mayfair Square nor any joint agent has any authority to make any representations about the property, and accordingly any information given is entirely without responsibility on the part of the agents, seller(s), lessor(s) or landlord(s).

Any areas, measurements or distances are approximate. The text, photographs and plans are for guidance only and are not necessarily comprehensive. Regulations etc: Any reference to alterations to, or use of, any part of the property does not mean that any necessary planning, building regulations or other consent has been obtained. A buyer or lessee must find out by inspection or in other ways that these matters have been properly dealt with and that all information is correct.



**MAYFAIR SQUARE**

1 Mayfair Place, London W1J 8AJ, United Kingdom

+44 (0)207 184 9888 | [info@mayfairsquare.co.uk](mailto:info@mayfairsquare.co.uk) | [www.mayfairsquare.co.uk](http://www.mayfairsquare.co.uk)

---