

PARK LANE, MAYFAIR, LONDON W1

£13,846 PW



## MAYFAIR SQUARE

1 Mayfair Place, London W1J 8AJ, United Kingdom

+44 (0)207 184 9888 | [info@mayfairsquare.co.uk](mailto:info@mayfairsquare.co.uk) | [www.mayfairsquare.co.uk](http://www.mayfairsquare.co.uk)

# PARK LANE, MAYFAIR, LONDON W1

£13,846 PW

---

## PROPERTY DESCRIPTION

Luxurious 4-Bedroom Apartment with Hyde Park Views on Park Lane.

This stunning Georgian residence overlooking Hyde Park, once the site of glamorous parties hosted by Hollywood icons from the "Golden Age," is now available for rent.

Spanning an impressive 5,921 sq ft, this luxurious four-bedroom apartment is situated within a prestigious period building on Park Lane in Mayfair and offers breathtaking park views.

Recently renovated to the highest standards, the property features four spacious bedrooms, each with its own en-suite bathroom, a grand reception room, an elegant dining room, and a family room that opens onto a private terrace. The fully fitted kitchen is equipped with top-of-the-line appliances, perfect for both daily living and entertaining.

For ultimate relaxation, residents can enjoy a private swimming pool with an adjoining spa and sauna, creating a tranquil retreat within this exceptional home.

This exquisite apartment presents a rare opportunity to experience luxury living in one of London's most prestigious addresses.

### Living in Mayfair

Synonymous with prestige and wealth, Mayfair is one of London's most desirable places to live, known for its elegant period architecture, cosmopolitan restaurants, 5-star hotels, and exclusive private members' clubs. The area is also home to renowned art galleries, auction houses, wine merchants, and some of the world's most exclusive designer boutiques.

In Mayfair, you'll find iconic luxury brands such as Louis Vuitton, Gucci, Bulgari, Chanel, Hermès, De Beers, Graff, and Rolex, alongside the historic luxury department store Fortnum & Mason. The neighbourhood is a culinary hotspot, boasting some of the city's finest Michelin-starred restaurants run by world-famous chefs, as well as swanky bars perfect for refined evenings out.

Despite its small size, Mayfair offers an exceptional balance of urban sophistication and green tranquillity. It is bordered by Hyde Park and Green Park, providing over 350 acres of green space for leisurely strolls and outdoor relaxation. Within the neighbourhood, Grosvenor Square and Mount Street Gardens serve as peaceful retreats and are cherished by local residents.

Mayfair's unparalleled elegance and prime location make it a true symbol of luxury living in London.



## MAYFAIR SQUARE

1 Mayfair Place, London W1J 8AJ, United Kingdom

+44 (0)207 184 9888 | [info@mayfairsquare.co.uk](mailto:info@mayfairsquare.co.uk) | [www.mayfairsquare.co.uk](http://www.mayfairsquare.co.uk)

---

PARK LANE, MAYFAIR, LONDON W1

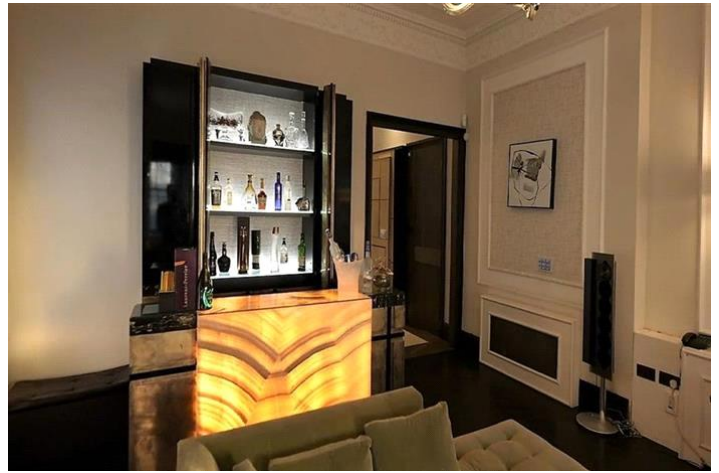
£13,846 PW



MAYFAIR SQUARE

1 Mayfair Place, London W1J 8AJ, United Kingdom

+44 (0)207 184 9888 | [info@mayfairsquare.co.uk](mailto:info@mayfairsquare.co.uk) | [www.mayfairsquare.co.uk](http://www.mayfairsquare.co.uk)



## MAYFAIR SQUARE

1 Mayfair Place, London W1J 8AJ, United Kingdom

+44 (0)207 184 9888 | [info@mayfairsquare.co.uk](mailto:info@mayfairsquare.co.uk) | [www.mayfairsquare.co.uk](http://www.mayfairsquare.co.uk)

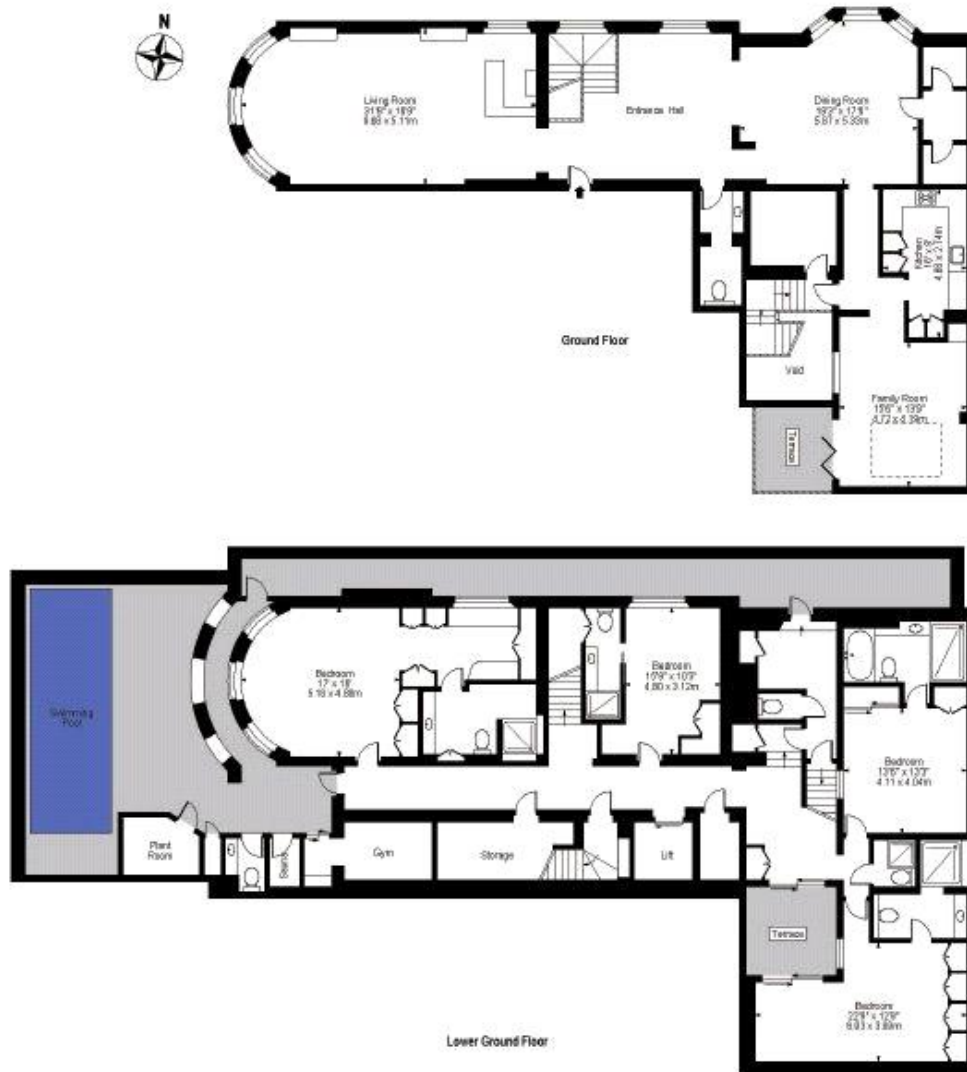


# MAYFAIR SQUARE

1 Mayfair Place, London W1J 8AJ, United Kingdom

+44 (0)207 184 9888 | [info@mayfairsquare.co.uk](mailto:info@mayfairsquare.co.uk) | [www.mayfairsquare.co.uk](http://www.mayfairsquare.co.uk)

# Park Lane



For Illustration Purposes Only - Not To Scale



## MAYFAIR SQUARE

1 Mayfair Place, London W1J 8AJ, United Kingdom

+44 (0)207 184 9888 | [info@mayfairsquare.co.uk](mailto:info@mayfairsquare.co.uk) | [www.mayfairsquare.co.uk](http://www.mayfairsquare.co.uk)

# PARK LANE, MAYFAIR, LONDON W1

£13,846 PW



Energy Efficiency Rating		
	Current	Potential
Very energy efficient - lower running costs		
(92-100) <b>A</b>		
(81-91) <b>B</b>		<b>85</b>
(69-80) <b>C</b>	<b>79</b>	
(55-68) <b>D</b>		
(39-54) <b>E</b>		
(21-38) <b>F</b>		
(1-20) <b>G</b>		
Not energy efficient - higher running costs		
<b>England &amp; Wales</b>	EU Directive 2002/91/EC	

The energy efficiency rating is a measure of the overall efficiency of a home. The higher the rating the more energy efficient the home is and the lower the fuel bills will be.



## MAYFAIR SQUARE

1 Mayfair Place, London W1J 8AJ, United Kingdom

+44 (0)207 184 9888 | info@mayfairsquare.co.uk | www.mayfairsquare.co.uk

PARK LANE, MAYFAIR, LONDON W1

£13,846 PW

---

FOR MORE INFORMATION PLEASE CONTACT US

Important Notice:

Particulars: These particulars are not an offer or contract, nor part of one. You should not rely on statements by Mayfair Square in the particulars or by word of mouth or in writing ("information") as being factually accurate about the property, its condition or its value. Neither Mayfair Square nor any joint agent has any authority to make any representations about the property, and accordingly any information given is entirely without responsibility on the part of the agents, seller(s), lessor(s) or landlord(s).

Any areas, measurements or distances are approximate. The text, photographs and plans are for guidance only and are not necessarily comprehensive. Regulations etc: Any reference to alterations to, or use of, any part of the property does not mean that any necessary planning, building regulations or other consent has been obtained. A buyer or lessee must find out by inspection or in other ways that these matters have been properly dealt with and that all information is correct.



**MAYFAIR SQUARE**

1 Mayfair Place, London W1J 8AJ, United Kingdom

+44 (0)207 184 9888 | [info@mayfairsquare.co.uk](mailto:info@mayfairsquare.co.uk) | [www.mayfairsquare.co.uk](http://www.mayfairsquare.co.uk)

---