

UPPER GROSVENOR STREET, MAYFAIR, LONDON W1
£12,500 PW



MAYFAIR SQUARE

1 Mayfair Place, London W1J 8AJ, United Kingdom

+44 (0)207 184 9888 | info@mayfairsquare.co.uk | www.mayfairsquare.co.uk

UPPER GROSVENOR STREET, MAYFAIR, LONDON W1

£12,500 PW

PROPERTY DESCRIPTION

Nestled in an exceptionally prestigious location, this luxury apartment is perfectly situated just moments away from the iconic Grosvenor Square.

This elegant duplex apartment spans over 4,000 square feet and is graced with a spacious double reception room that radiates sophistication. Within this opulent apartment, you'll discover four bedrooms and four bathrooms. An additional study room offers the possibility of serving as a cozy fifth bedroom, complemented by a separate guest room to accommodate your esteemed guests.

The master bedroom, a haven of opulence, offers a retreat with its private dressing room, seamlessly leading to an expansive outdoor patio that beckons for indulgent moments of repose. The living space embodies a harmonious masterpiece of opulence, highlighted by a sprawling 32-foot-wide reception room meticulously designed.

The apartment has a large modern, fully equipped kitchen with a breakfast area. Furthermore, there's a luxury dining room, ideal for those who enjoy hosting lavish dinner parties.

Arrange a private viewing today with our team at Mayfair Square to view this exceptional apartment.

Living in Mayfair

Synonymous with luxury, Mayfair stands out as one of the most affluent neighborhoods in London. Known for its exquisite period architecture, Mayfair boasts cosmopolitan restaurants, luxurious 5-star hotels, prestigious gentleman's clubs, art galleries, auction houses, and fine wine merchants. This area is a haven for exclusive experiences, offering a wealth of upscale restaurants, trendy bars, and designer boutiques. Mayfair is home to some of the world's most renowned brands, including Louis Vuitton, Gucci, Bulgari, Chanel, Hermes, De Beers, Graff, and Rolex. Notably, Mayfair hosts its own luxury department store, Fortnum & Mason.

Though Mayfair's geographical footprint is modest, it is packed with Michelin-starred restaurants operated by globally celebrated chefs. Two beautiful parks border the neighborhood: the vast expanse of Hyde Park, spanning over 350 acres of greenery, and the peaceful Green Park.

Nestled in the heart of Mayfair, Grosvenor Square and Mount Street Gardens are beloved green oases cherished by residents, adding a touch of tranquility to this cosmopolitan hub of opulence.



MAYFAIR SQUARE

1 Mayfair Place, London W1J 8AJ, United Kingdom

+44 (0)207 184 9888 | info@mayfairsquare.co.uk | www.mayfairsquare.co.uk

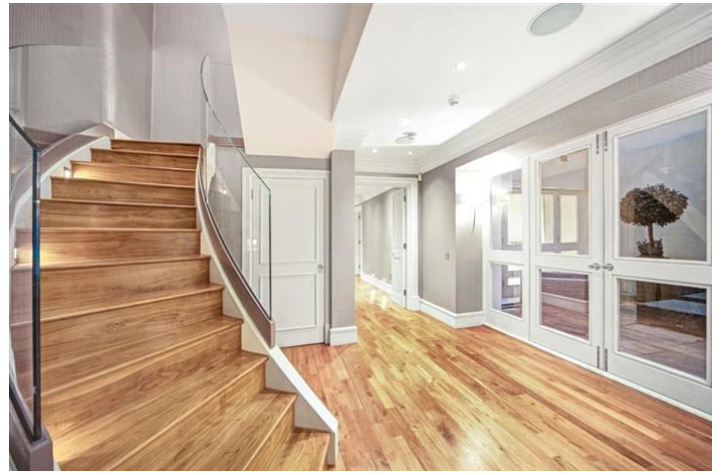
UPPER GROSVENOR STREET, MAYFAIR, LONDON W1
£12,500 PW



MAYFAIR SQUARE

1 Mayfair Place, London W1J 8AJ, United Kingdom

+44 (0)207 184 9888 | info@mayfairsquare.co.uk | www.mayfairsquare.co.uk



MAYFAIR SQUARE

1 Mayfair Place, London W1J 8AJ, United Kingdom

+44 (0)207 184 9888 | info@mayfairsquare.co.uk | www.mayfairsquare.co.uk



MAYFAIR SQUARE

1 Mayfair Place, London W1J 8AJ, United Kingdom

+44 (0)207 184 9888 | info@mayfairsquare.co.uk | www.mayfairsquare.co.uk



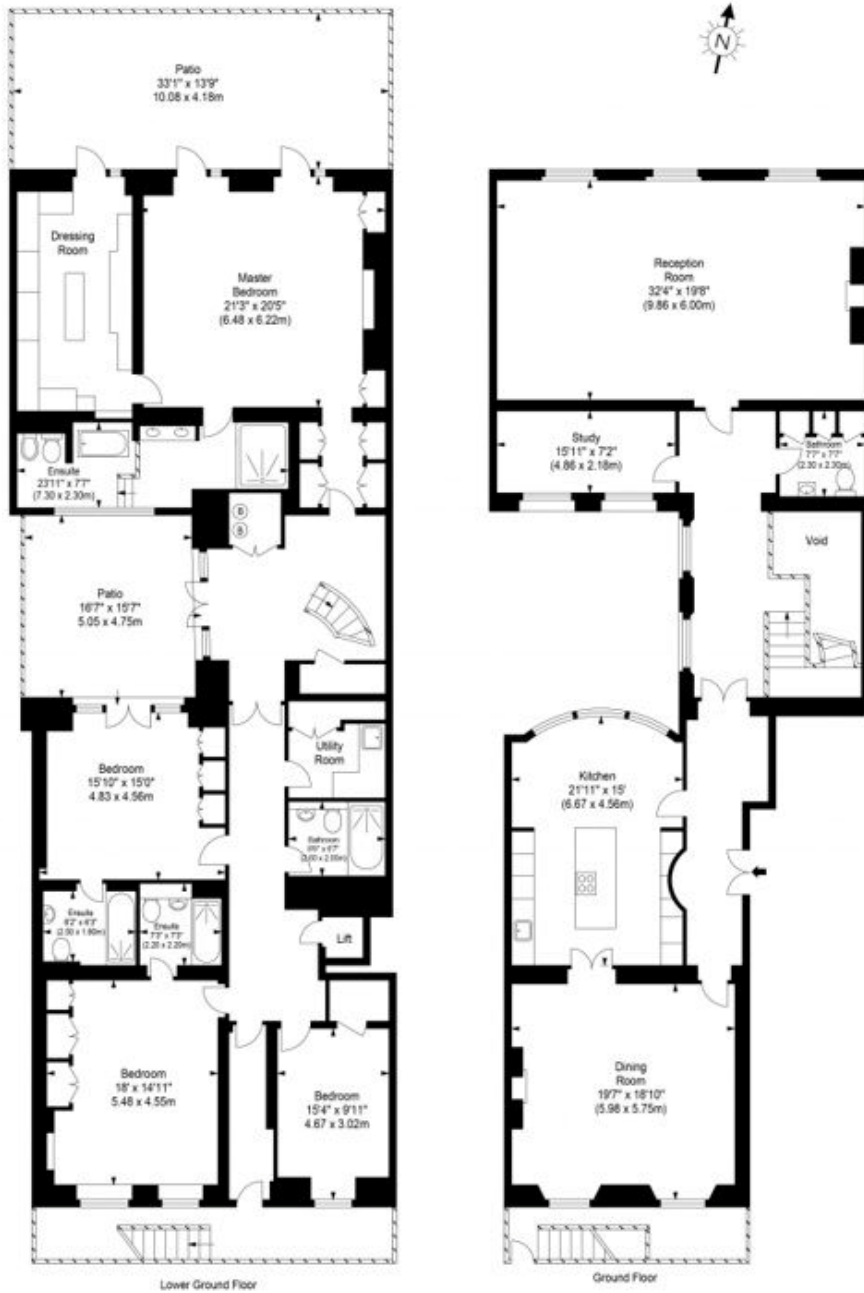
MAYFAIR SQUARE

1 Mayfair Place, London W1J 8AJ, United Kingdom

+44 (0)207 184 9888 | info@mayfairsquare.co.uk | www.mayfairsquare.co.uk

Upper Grosvenor Street, London, W1K 2NA

Approx. Gross Internal Area 4291 sq ft - 398.65 sq m
(Excluding Void & Lift)



Disclaimer : Floor plan measurements are approximate and are for illustrative purposes only
While we do not doubt the floor plan accuracy and completeness, you or your advisors should
conduct a careful, independent investigation of the property in respect of monetary valuation



MAYFAIR SQUARE

1 Mayfair Place, London W1J 8AJ, United Kingdom

+44 (0)207 184 9888 | info@mayfairsquare.co.uk | www.mayfairsquare.co.uk

UPPER GROSVENOR STREET, MAYFAIR, LONDON W1

£12,500 PW



Energy Efficiency Rating		
	Current	Potential
Very energy efficient - lower running costs		
(92-100) A		
(81-91) B		
(69-80) C		78
(55-68) D	58	
(39-54) E		
(21-38) F		
(1-20) G		
Not energy efficient - higher running costs		
England & Wales	EU Directive 2002/91/EC	

The energy efficiency rating is a measure of the overall efficiency of a home. The higher the rating the more energy efficient the home is and the lower the fuel bills will be.



MAYFAIR SQUARE

1 Mayfair Place, London W1J 8AJ, United Kingdom

+44 (0)207 184 9888 | info@mayfairsquare.co.uk | www.mayfairsquare.co.uk

UPPER GROSVENOR STREET, MAYFAIR, LONDON W1
£12,500 PW

FOR MORE INFORMATION PLEASE CONTACT US

Important Notice:

Particulars: These particulars are not an offer or contract, nor part of one. You should not rely on statements by Mayfair Square in the particulars or by word of mouth or in writing ("information") as being factually accurate about the property, its condition or its value. Neither Mayfair Square nor any joint agent has any authority to make any representations about the property, and accordingly any information given is entirely without responsibility on the part of the agents, seller(s), lessor(s) or landlord(s).

Any areas, measurements or distances are approximate. The text, photographs and plans are for guidance only and are not necessarily comprehensive. Regulations etc: Any reference to alterations to, or use of, any part of the property does not mean that any necessary planning, building regulations or other consent has been obtained. A buyer or lessee must find out by inspection or in other ways that these matters have been properly dealt with and that all information is correct.



MAYFAIR SQUARE

1 Mayfair Place, London W1J 8AJ, United Kingdom

+44 (0)207 184 9888 | info@mayfairsquare.co.uk | www.mayfairsquare.co.uk
