

ST. JOHNS WOOD PARK, LONDON

£1,400 PW



MAYFAIR SQUARE

1 Mayfair Place, London W1J 8AJ, United Kingdom

+44 (0)207 184 9888 | info@mayfairsquare.co.uk | www.mayfairsquare.co.uk

ST. JOHNS WOOD PARK, LONDON

£1,400 PW

PROPERTY DESCRIPTION

A spacious three-bedroom luxury apartment in St John's Wood.

This apartment boasts three bedrooms and three bathrooms, alongside a generously proportioned open-plan reception and dining area, radiating a cozy and welcoming atmosphere. The fully equipped kitchen complements the expansive layout, offering over 1100 square feet of living space, ensuring comfort and convenience.

This apartment is set within a gated residential development with landscaped gardens and offers 24-hour concierge service, off-street parking, and on-site property management. It enjoys a prime location near the vibrant amenities of Swiss Cottage and St. John's Wood. The convenience of Swiss Cottage Underground Station (Jubilee Line) is just a short walk away, providing easy access to transport networks.

Living in St Johns Wood

Nestled in the heart of London, St John's Wood offers a true village atmosphere, captivating both families and young professionals. Renowned worldwide for the iconic Lord's Cricket Ground and the legendary Abbey Road Studios, where the Beatles and Pink Floyd recorded their music, the area exudes cultural significance.

St John's Wood High Street boasts an array of fashion boutiques, delis, and restaurants, as well as organic food shops, catering to diverse tastes and preferences. Meanwhile, Regent's Park, spanning 395 acres of serene greenery, features a breathtaking rose garden adorned with over 12,000 roses. Additionally, the park hosts the renowned Open Air Theatre and the historic London Zoo, enriching the area's cultural and recreational offerings.

Parking options: Off Street



MAYFAIR SQUARE

1 Mayfair Place, London W1J 8AJ, United Kingdom

+44 (0)207 184 9888 | info@mayfairsquare.co.uk | www.mayfairsquare.co.uk

ST. JOHNS WOOD PARK, LONDON
£1,400 PW



MAYFAIR SQUARE

1 Mayfair Place, London W1J 8AJ, United Kingdom

+44 (0)207 184 9888 | info@mayfairsquare.co.uk | www.mayfairsquare.co.uk



MAYFAIR SQUARE

1 Mayfair Place, London W1J 8AJ, United Kingdom

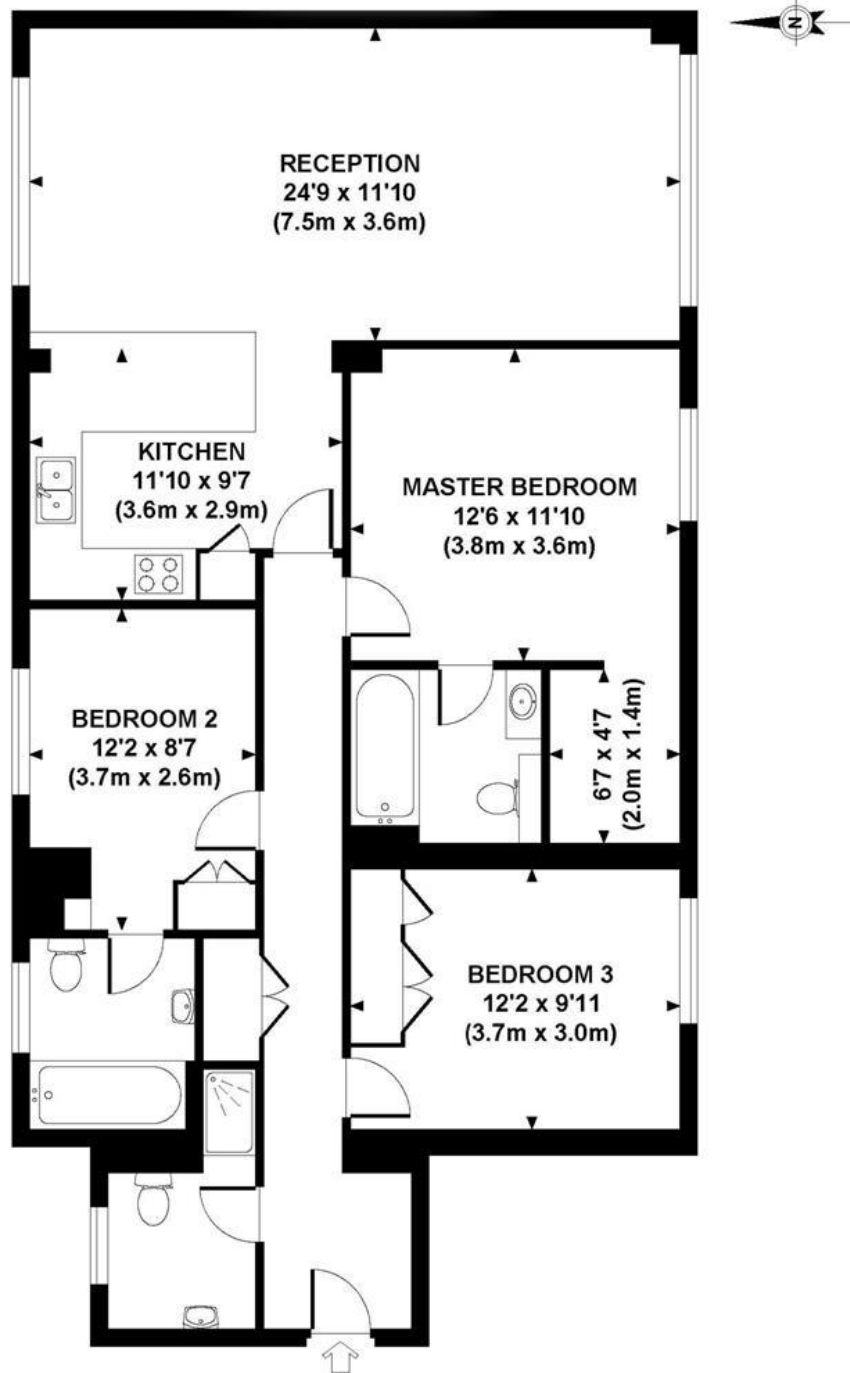
+44 (0)207 184 9888 | info@mayfairsquare.co.uk | www.mayfairsquare.co.uk



MAYFAIR SQUARE

1 Mayfair Place, London W1J 8AJ, United Kingdom

+44 (0)207 184 9888 | info@mayfairsquare.co.uk | www.mayfairsquare.co.uk



APPROXIMATE GROSS INTERNAL FLOOR AREA 1111SQ FT / 103 SQ M

Although every attempt has been made to ensure accuracy, all measurements are approximate.
The floor plan's for illustrative purposes only and not to scale. Measured in accordance to RICS standards.
DE-PHOTOGRAPHY.NET



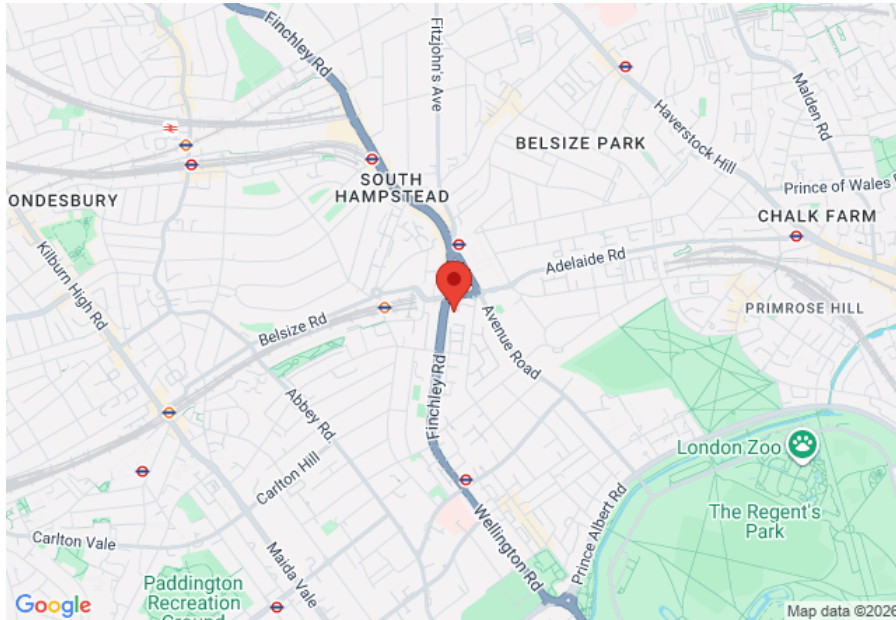
MAYFAIR SQUARE


1 Mayfair Place, London W1J 8AJ, United Kingdom

+44 (0)207 184 9888 | info@mayfairsquare.co.uk | www.mayfairsquare.co.uk

ST. JOHNS WOOD PARK, LONDON

£1,400 PW



Energy Efficiency Rating		
	Current	Potential
<i>Very energy efficient - lower running costs</i>		
(92-100) A		
(81-91) B		
(69-80) C		
(55-68) D	61	61
(39-54) E		
(21-38) F		
(1-20) G		
<i>Not energy efficient - higher running costs</i>		
England & Wales	EU Directive 2002/91/EC 	

The energy efficiency rating is a measure of the overall efficiency of a home. The higher the rating the more energy efficient the home is and the lower the fuel bills will be.



MAYFAIR SQUARE

1 Mayfair Place, London W1J 8AJ, United Kingdom

+44 (0)207 184 9888 | info@mayfairsquare.co.uk | www.mayfairsquare.co.uk

ST. JOHNS WOOD PARK, LONDON

£1,400 PW

FOR MORE INFORMATION PLEASE CONTACT US

Important Notice:

Particulars: These particulars are not an offer or contract, nor part of one. You should not rely on statements by Mayfair Square in the particulars or by word of mouth or in writing ("information") as being factually accurate about the property, its condition or its value. Neither Mayfair Square nor any joint agent has any authority to make any representations about the property, and accordingly any information given is entirely without responsibility on the part of the agents, seller(s), lessor(s) or landlord(s).

Any areas, measurements or distances are approximate. The text, photographs and plans are for guidance only and are not necessarily comprehensive. Regulations etc: Any reference to alterations to, or use of, any part of the property does not mean that any necessary planning, building regulations or other consent has been obtained. A buyer or lessee must find out by inspection or in other ways that these matters have been properly dealt with and that all information is correct.



MAYFAIR SQUARE

1 Mayfair Place, London W1J 8AJ, United Kingdom

+44 (0)207 184 9888 | info@mayfairsquare.co.uk | www.mayfairsquare.co.uk
