

ST. JOHN'S WOOD, LONDON

£1,300 PW



MAYFAIR SQUARE

1 Mayfair Place, London W1J 8AJ, United Kingdom

+44 (0)207 184 9888 | info@mayfairsquare.co.uk | www.mayfairsquare.co.uk

ST. JOHN'S WOOD, LONDON

£1,300 PW

PROPERTY DESCRIPTION

This stunning, bright and spacious pet friendly three double-bedroom / three bathroom flat is located in the popular area of St John's Wood.

The property is situated within a gated development with 24-hour portorage, and consists of three double bedrooms, three en-suite fully-tiled bathrooms with power-showers and a bright and airy reception room with dining area. There is also a separate fully-fitted kitchen with stone worktops and Bosch appliances, including a separate washer and dryer. The apartment boasts a bespoke interior design with stone and wood flooring, double glazing and satellite reader for Sky/Hotbird. Car parking is available on a first-come, first-served basis. Car park spaces, garages and lockers are available to rent under separate negotiation.

St John's Wood Area

A true village atmosphere in the heart of London, St John's Wood appeals to both families and young professionals alike.

The area is world-renowned for the iconic Lord's Cricket ground and the famous Abbey Road Studios, which was the recording venue for the Beatles and Pink Floyd.

Shopping and Eateries in St John's Wood

St John's Wood High Street has an excellent variety of fashion boutiques, delis and restaurants, as well as organic food shops.

Parks & Green Spaces

The famous Regent's Park with its 395 acres of beautiful tranquil space features an open-air theatre and a wonderful rose garden that has over 12,000 roses. The Park is also home to London Zoo.



MAYFAIR SQUARE

1 Mayfair Place, London W1J 8AJ, United Kingdom

+44 (0)207 184 9888 | info@mayfairsquare.co.uk | www.mayfairsquare.co.uk

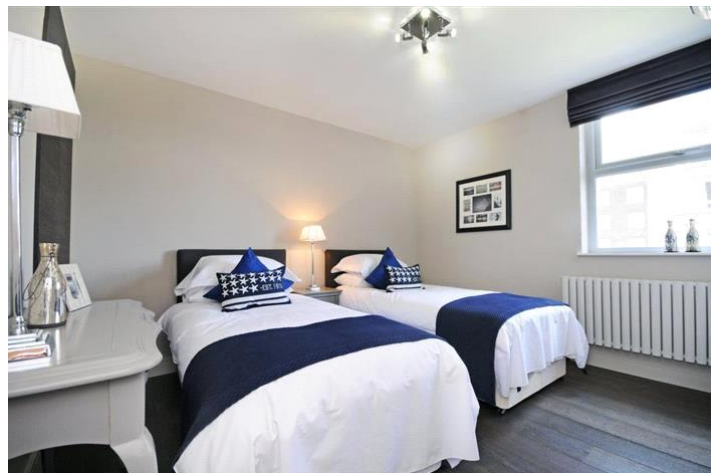
ST. JOHN'S WOOD, LONDON
£1,300 PW



MAYFAIR SQUARE

1 Mayfair Place, London W1J 8AJ, United Kingdom

+44 (0)207 184 9888 | info@mayfairsquare.co.uk | www.mayfairsquare.co.uk



MAYFAIR SQUARE

1 Mayfair Place, London W1J 8AJ, United Kingdom

+44 (0)207 184 9888 | info@mayfairsquare.co.uk | www.mayfairsquare.co.uk



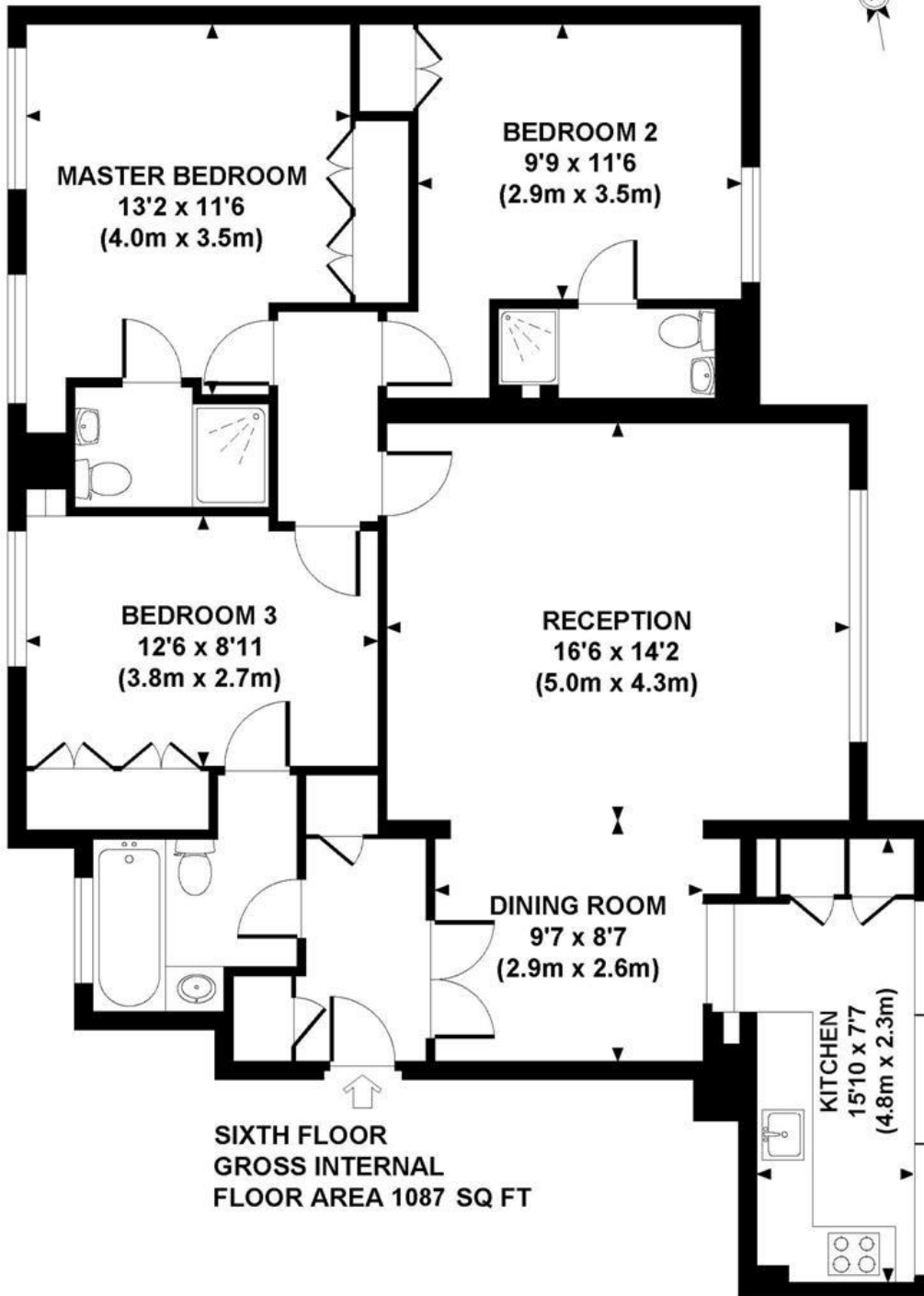
MAYFAIR SQUARE

1 Mayfair Place, London W1J 8AJ, United Kingdom

+44 (0)207 184 9888 | info@mayfairsquare.co.uk | www.mayfairsquare.co.uk

BOYDELL COURT

Approximate Gross Internal Area 1087 sq ft / 101 sq m



Although every attempt has been made to ensure accuracy, all measurements are approximate.
The floor plan's for illustrative purposes only and not to scale. Measured in accordance to RICS standards.
DE-PHOTOGRAPHY.NET



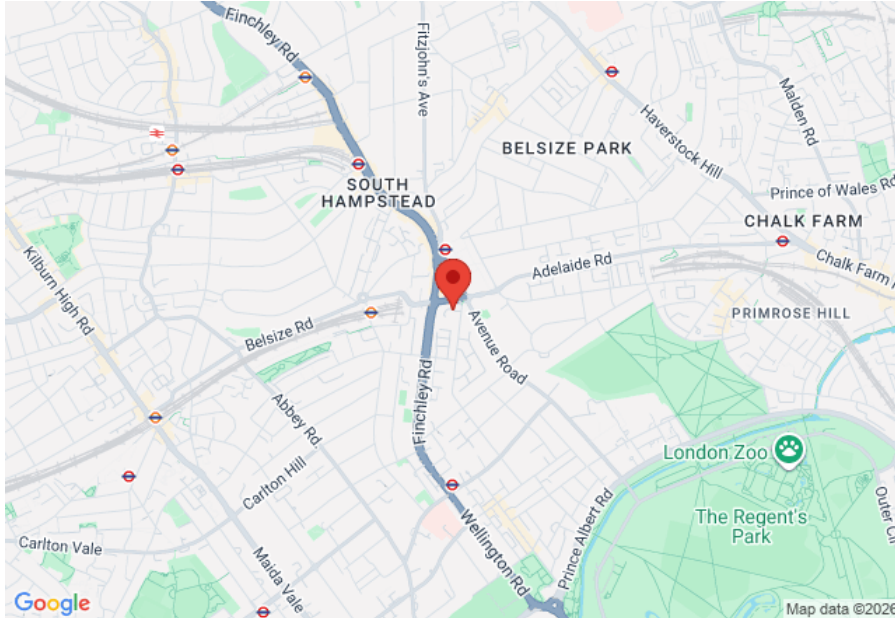
MAYFAIR SQUARE

1 Mayfair Place, London W1J 8AJ, United Kingdom

+44 (0)207 184 9888 | info@mayfairsquare.co.uk | www.mayfairsquare.co.uk

ST. JOHN'S WOOD, LONDON

£1,300 PW



Energy Efficiency Rating		
	Current	Potential
Very energy efficient - lower running costs		
(92-100) A		
(81-91) B		
(69-80) C		
(55-68) D	70	80
(39-54) E		
(21-38) F		
(1-20) G		
Not energy efficient - higher running costs		
England & Wales	EU Directive 2002/91/EC	

The energy efficiency rating is a measure of the overall efficiency of a home. The higher the rating the more energy efficient the home is and the lower the fuel bills will be.



MAYFAIR SQUARE

1 Mayfair Place, London W1J 8AJ, United Kingdom

+44 (0)207 184 9888 | info@mayfairsquare.co.uk | www.mayfairsquare.co.uk

ST. JOHN'S WOOD, LONDON

£1,300 PW

FOR MORE INFORMATION PLEASE CONTACT US

Important Notice:

Particulars: These particulars are not an offer or contract, nor part of one. You should not rely on statements by Mayfair Square in the particulars or by word of mouth or in writing ("information") as being factually accurate about the property, its condition or its value. Neither Mayfair Square nor any joint agent has any authority to make any representations about the property, and accordingly any information given is entirely without responsibility on the part of the agents, seller(s), lessor(s) or landlord(s).

Any areas, measurements or distances are approximate. The text, photographs and plans are for guidance only and are not necessarily comprehensive. Regulations etc: Any reference to alterations to, or use of, any part of the property does not mean that any necessary planning, building regulations or other consent has been obtained. A buyer or lessee must find out by inspection or in other ways that these matters have been properly dealt with and that all information is correct.



MAYFAIR SQUARE

1 Mayfair Place, London W1J 8AJ, United Kingdom

+44 (0)207 184 9888 | info@mayfairsquare.co.uk | www.mayfairsquare.co.uk
