

GARRETT MANSIONS, LONDON W2

£1,718 PW



MAYFAIR SQUARE

1 Mayfair Place, London W1J 8AJ, United Kingdom

+44 (0)207 184 9888 | info@mayfairsquare.co.uk | www.mayfairsquare.co.uk

GARRETT MANSIONS, LONDON W2

£1,718 PW

PROPERTY DESCRIPTION

Luxury Two Bedroom Apartment with Spa, Gym and Concierge.

A beautifully designed and newly built two-bedroom, two-bathroom apartment situated on the third floor of a prestigious modern development. Extending to approximately 840 sq ft, this exceptional residence offers stylish contemporary living finished to a high specification throughout, with comfort cooling and a private balcony.

The apartment features a bright and spacious open-plan reception room with floor-to-ceiling windows, creating an abundance of natural light and an ideal setting for both relaxing and entertaining. The reception area opens directly onto a private balcony, enhancing the sense of space and indoor-outdoor living.

The fully integrated designer kitchen is fitted with premium Siemens and Miele appliances, including an oven, induction hob, fridge freezer, dishwasher, and wine chiller, complemented by sleek composite stone worktops.

There are two generously sized double bedrooms, including a principal bedroom with a luxurious en-suite bathroom, alongside a stylish contemporary family bathroom. The apartment is move-in ready, with internet already connected, and further benefits from Samsung Smart TVs and a Samsung sound bar.

Residents enjoy access to an outstanding range of luxury facilities, including a 24-hour concierge service, state-of-the-art gymnasium, spa with swimming pool, sauna and steam room, cinema/media room, residents' lounge, private dining suite, boardroom facilities, and conference and meeting spaces.

This impressive apartment offers an exceptional lifestyle with world-class amenities, ideal for those seeking luxury modern living in a highly desirable development.



MAYFAIR SQUARE

1 Mayfair Place, London W1J 8AJ, United Kingdom

+44 (0)207 184 9888 | info@mayfairsquare.co.uk | www.mayfairsquare.co.uk

GARRETT MANSIONS, LONDON W2
£1,718 PW



MAYFAIR SQUARE

1 Mayfair Place, London W1J 8AJ, United Kingdom

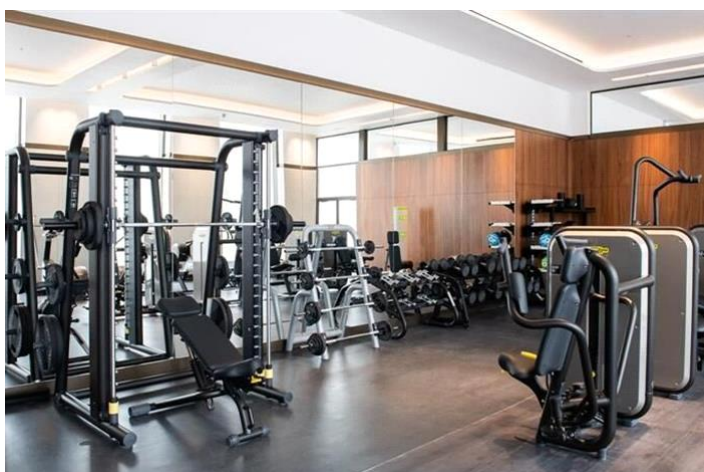
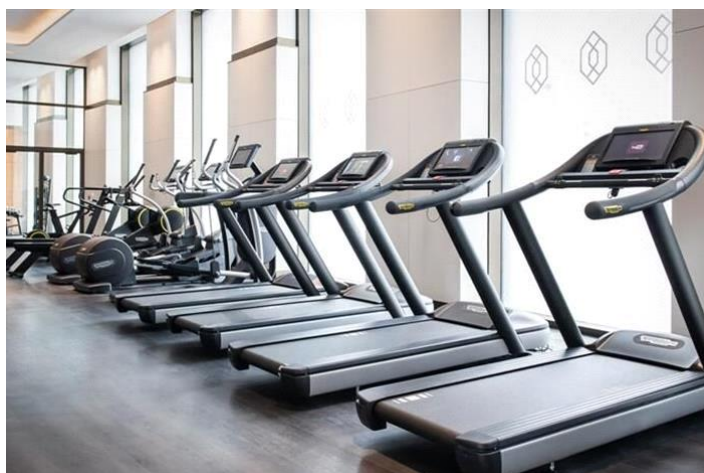
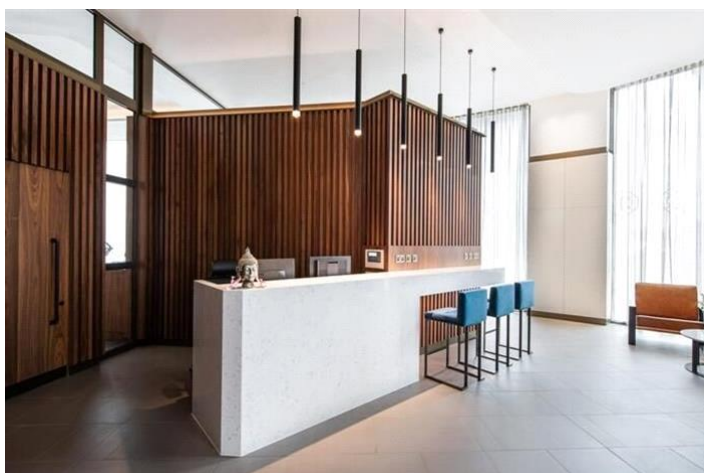
+44 (0)207 184 9888 | info@mayfairsquare.co.uk | www.mayfairsquare.co.uk



MAYFAIR SQUARE

1 Mayfair Place, London W1J 8AJ, United Kingdom

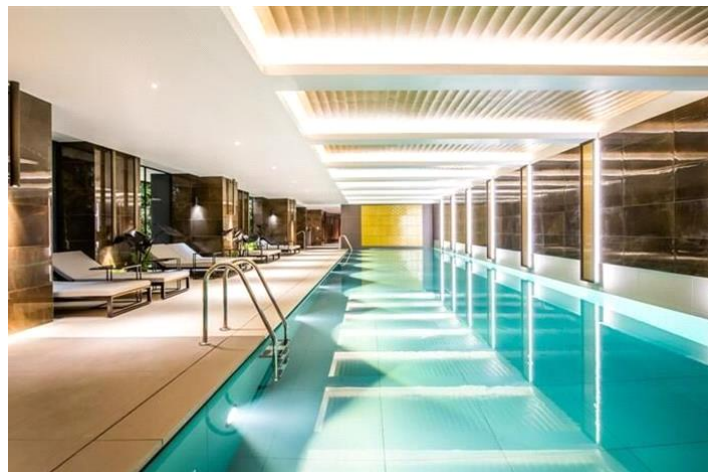
+44 (0)207 184 9888 | info@mayfairsquare.co.uk | www.mayfairsquare.co.uk



MAYFAIR SQUARE

1 Mayfair Place, London W1J 8AJ, United Kingdom

+44 (0)207 184 9888 | info@mayfairsquare.co.uk | www.mayfairsquare.co.uk



MAYFAIR SQUARE

1 Mayfair Place, London W1J 8AJ, United Kingdom

+44 (0)207 184 9888 | info@mayfairsquare.co.uk | www.mayfairsquare.co.uk



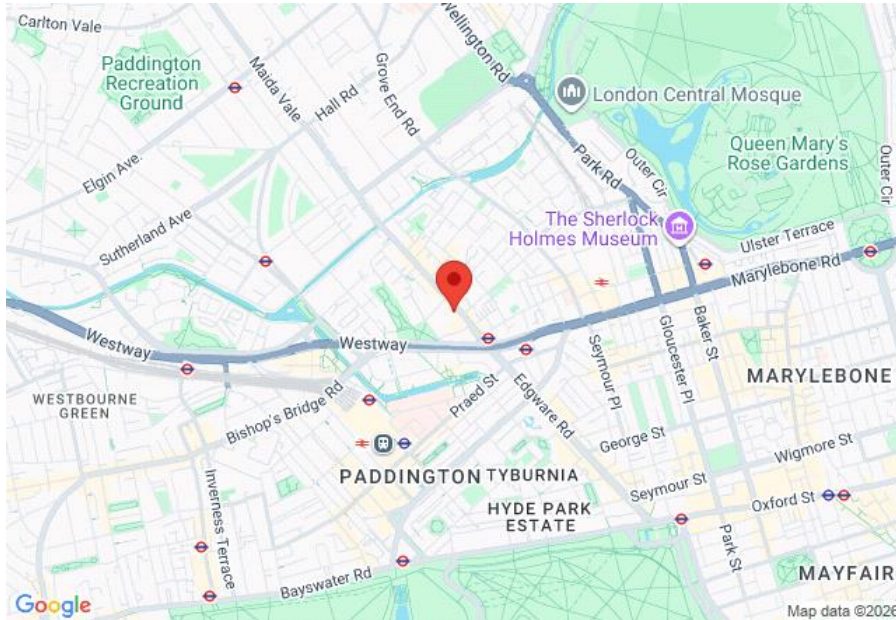
MAYFAIR SQUARE


1 Mayfair Place, London W1J 8AJ, United Kingdom

+44 (0)207 184 9888 | info@mayfairsquare.co.uk | www.mayfairsquare.co.uk

GARRETT MANSIONS, LONDON W2

£1,718 PW



Energy Efficiency Rating		
	Current	Potential
Very energy efficient - lower running costs		
(92-100) A		
(81-91) B	86	86
(69-80) C		
(55-68) D		
(39-54) E		
(21-38) F		
(1-20) G		
Not energy efficient - higher running costs		
England & Wales	EU Directive 2002/91/EC 	

The energy efficiency rating is a measure of the overall efficiency of a home. The higher the rating the more energy efficient the home is and the lower the fuel bills will be.



MAYFAIR SQUARE

1 Mayfair Place, London W1J 8AJ, United Kingdom

+44 (0)207 184 9888 | info@mayfairsquare.co.uk | www.mayfairsquare.co.uk

GARRETT MANSIONS, LONDON W2

£1,718 PW

FOR MORE INFORMATION PLEASE CONTACT US

Important Notice:

Particulars: These particulars are not an offer or contract, nor part of one. You should not rely on statements by Mayfair Square in the particulars or by word of mouth or in writing ("information") as being factually accurate about the property, its condition or its value. Neither Mayfair Square nor any joint agent has any authority to make any representations about the property, and accordingly any information given is entirely without responsibility on the part of the agents, seller(s), lessor(s) or landlord(s).

Any areas, measurements or distances are approximate. The text, photographs and plans are for guidance only and are not necessarily comprehensive. Regulations etc: Any reference to alterations to, or use of, any part of the property does not mean that any necessary planning, building regulations or other consent has been obtained. A buyer or lessee must find out by inspection or in other ways that these matters have been properly dealt with and that all information is correct.



MAYFAIR SQUARE

1 Mayfair Place, London W1J 8AJ, United Kingdom

+44 (0)207 184 9888 | info@mayfairsquare.co.uk | www.mayfairsquare.co.uk
