

EBURY APARTMENTS, VICTORIA, LONDON

£2,000,000



MAYFAIR SQUARE

1 Mayfair Place, London W1J 8AJ, United Kingdom

+44 (0)207 184 9888 | info@mayfairsquare.co.uk | www.mayfairsquare.co.uk

EBURY APARTMENTS, VICTORIA, LONDON

£2,000,000

PROPERTY DESCRIPTION

Exceptional Three-Bedroom Penthouse with Beautiful Skyline Views in a Landmark Westminster Development.

Set within a landmark residential development in Westminster's emerging new neighbourhood, this impressive three-bedroom penthouse extends to approximately 1,130 sq ft of bright, contemporary living space, complemented by beautiful skyline views of London, all within a secure and highly sought-after setting.

The property features a spacious open-plan reception room seamlessly incorporating a modern kitchen, beautifully appointed with integrated appliances and sleek finishes — ideal for both everyday living and entertaining. Flooded with natural light, the home further benefits from two private balconies, perfect for relaxing or hosting guests while enjoying elevated views.

There are three well-proportioned bedrooms, including a generous principal suite with an en-suite shower room, alongside a second stylish family bathroom. Underfloor heating throughout enhances comfort, while high-quality finishes create a refined and contemporary atmosphere.

Residents benefit from a concierge service, secure development entry and the added convenience of a private parking space.

Ideally located, the property is within easy reach of the vibrant amenities of Sloane Square, Victoria, Westminster and Pimlico, offering an excellent selection of restaurants, cafés, boutiques and transport links. The location makes it perfectly suited to professionals, international buyers and families seeking central London living with connectivity and lifestyle on the doorstep.

A superb opportunity to acquire a spacious and well-positioned home in one of London's most prestigious districts.



MAYFAIR SQUARE

1 Mayfair Place, London W1J 8AJ, United Kingdom

+44 (0)207 184 9888 | info@mayfairsquare.co.uk | www.mayfairsquare.co.uk

EBURY APARTMENTS, VICTORIA, LONDON

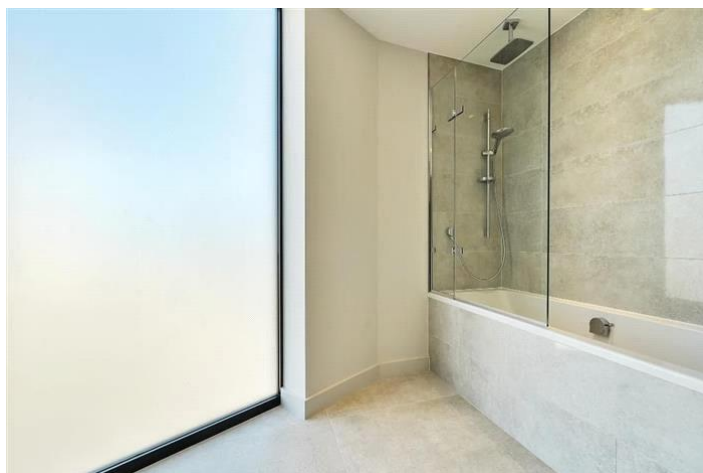
£2,000,000



MAYFAIR SQUARE

1 Mayfair Place, London W1J 8AJ, United Kingdom

+44 (0)207 184 9888 | info@mayfairsquare.co.uk | www.mayfairsquare.co.uk



MAYFAIR SQUARE

1 Mayfair Place, London W1J 8AJ, United Kingdom

+44 (0)207 184 9888 | info@mayfairsquare.co.uk | www.mayfairsquare.co.uk



MAYFAIR SQUARE

1 Mayfair Place, London W1J 8AJ, United Kingdom

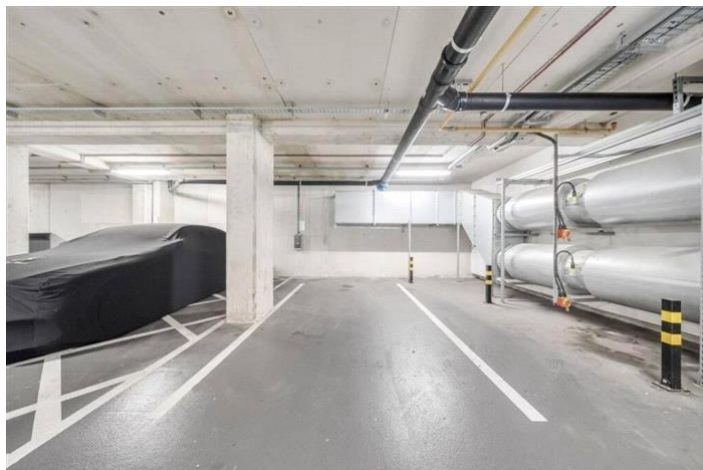
+44 (0)207 184 9888 | info@mayfairsquare.co.uk | www.mayfairsquare.co.uk



MAYFAIR SQUARE

1 Mayfair Place, London W1J 8AJ, United Kingdom

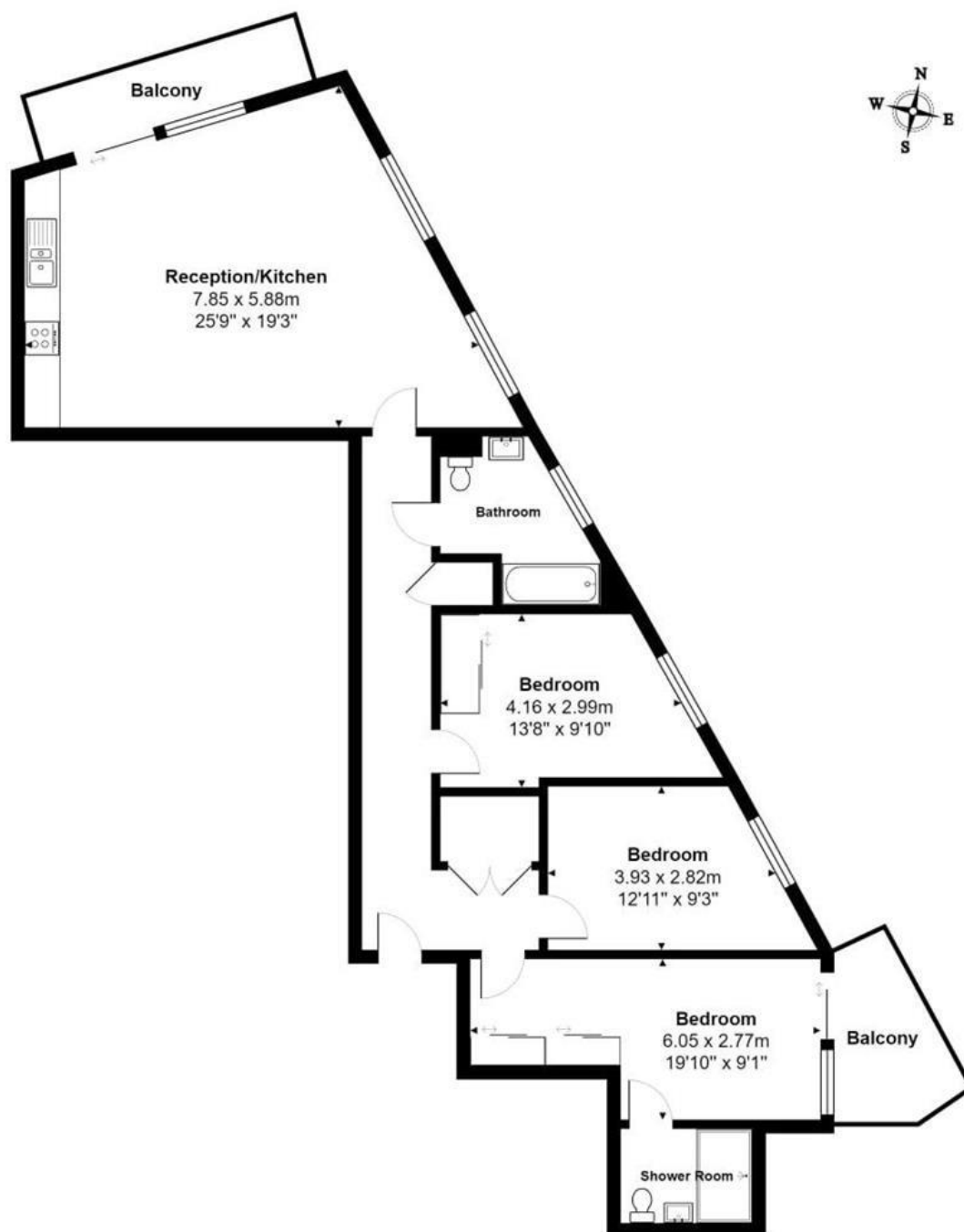
+44 (0)207 184 9888 | info@mayfairsquare.co.uk | www.mayfairsquare.co.uk



MAYFAIR SQUARE

1 Mayfair Place, London W1J 8AJ, United Kingdom

+44 (0)207 184 9888 | info@mayfairsquare.co.uk | www.mayfairsquare.co.uk



10th Floor

Total Area: 104.8 m² ... 1128 ft² (excluding balcony)

All measurements are approximate and for display purposes only.



MAYFAIR SQUARE

1 Mayfair Place, London W1J 8AJ, United Kingdom

+44 (0)207 184 9888 | info@mayfairsquare.co.uk | www.mayfairsquare.co.uk

EBURY APARTMENTS, VICTORIA, LONDON

£2,000,000



Energy Efficiency Rating		
	Current	Potential
Very energy efficient - lower running costs		
(92+) A		
(81-91) B	84	84
(69-80) C		
(55-68) D		
(39-54) E		
(21-38) F		
(1-20) G		
Not energy efficient - higher running costs		
England & Wales		EU Directive 2002/91/EC

The energy efficiency rating is a measure of the overall efficiency of a home. The higher the rating the more energy efficient the home is and the lower the fuel bills will be.



MAYFAIR SQUARE

1 Mayfair Place, London W1J 8AJ, United Kingdom

+44 (0)207 184 9888 | info@mayfairsquare.co.uk | www.mayfairsquare.co.uk

EBURY APARTMENTS, VICTORIA, LONDON

£2,000,000

FOR MORE INFORMATION PLEASE CONTACT US

Important Notice:

Particulars: These particulars are not an offer or contract, nor part of one. You should not rely on statements by Mayfair Square in the particulars or by word of mouth or in writing ("information") as being factually accurate about the property, its condition or its value. Neither Mayfair Square nor any joint agent has any authority to make any representations about the property, and accordingly any information given is entirely without responsibility on the part of the agents, seller(s), lessor(s) or landlord(s).

Any areas, measurements or distances are approximate. The text, photographs and plans are for guidance only and are not necessarily comprehensive. Regulations etc: Any reference to alterations to, or use of, any part of the property does not mean that any necessary planning, building regulations or other consent has been obtained. A buyer or lessee must find out by inspection or in other ways that these matters have been properly dealt with and that all information is correct.



MAYFAIR SQUARE

1 Mayfair Place, London W1J 8AJ, United Kingdom

+44 (0)207 184 9888 | info@mayfairsquare.co.uk | www.mayfairsquare.co.uk
