

GARRETT MANSIONS, LONDON W2

£1,750 PW



MAYFAIR SQUARE

1 Mayfair Place, London W1J 8AJ, United Kingdom

+44 (0)207 184 9888 | info@mayfairsquare.co.uk | www.mayfairsquare.co.uk

GARRETT MANSIONS, LONDON W2

£1,750 PW

PROPERTY DESCRIPTION

Stunning Two Bedroom Apartment with Spa, Gym and Concierge.

This luxurious, newly built and interior designed two-bedroom, two-bathroom apartment is located on the third floor and extends to approximately 834 sq ft, offering contemporary living finished to an exceptional standard. The property is available furnished or unfurnished and benefits from a private balcony and comfort cooling throughout.

The apartment features a spacious open-plan reception room with floor-to-ceiling windows, allowing an abundance of natural light and creating a bright, airy space ideal for both relaxing and entertaining. The reception area leads directly onto the private balcony, enhancing the sense of indoor-outdoor living. The fully integrated kitchen is fitted with premium Siemens and Miele appliances, including an oven, induction hob, large fridge freezer, dishwasher and wine chiller, all set within sleek composite stone worktops.

There are two well-proportioned double bedrooms, with the principal bedroom benefiting from a stylish en-suite bathroom, complemented by a contemporary family bathroom. The apartment is ready to move into, with internet already connected, and is equipped with large Samsung Smart TVs and a Samsung sound bar.

Residents enjoy access to an outstanding range of on-site facilities, including a 24-hour concierge, state-of-the-art gym, spa with swimming pool, sauna and steam room, cinema/media room, residents' lounge, private dining and boardroom facilities, and conference and meeting spaces.

This exceptional apartment offers a premium lifestyle with world-class amenities, ideal for those seeking modern, high-quality living in a beautifully designed environment.



MAYFAIR SQUARE

1 Mayfair Place, London W1J 8AJ, United Kingdom

+44 (0)207 184 9888 | info@mayfairsquare.co.uk | www.mayfairsquare.co.uk

GARRETT MANSIONS, LONDON W2

£1,750 PW



MAYFAIR SQUARE

1 Mayfair Place, London W1J 8AJ, United Kingdom

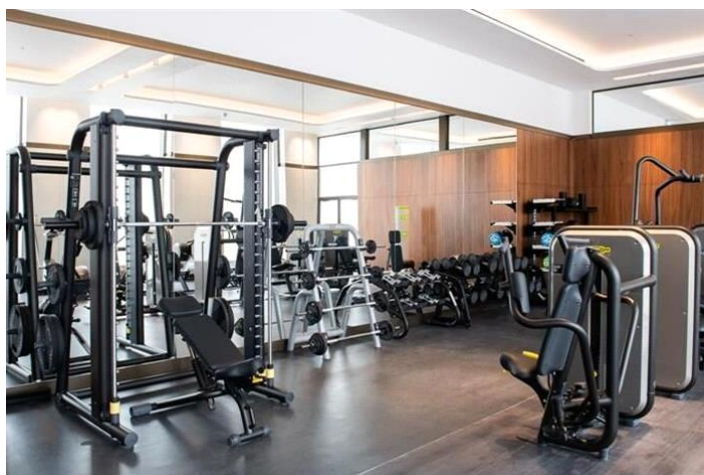
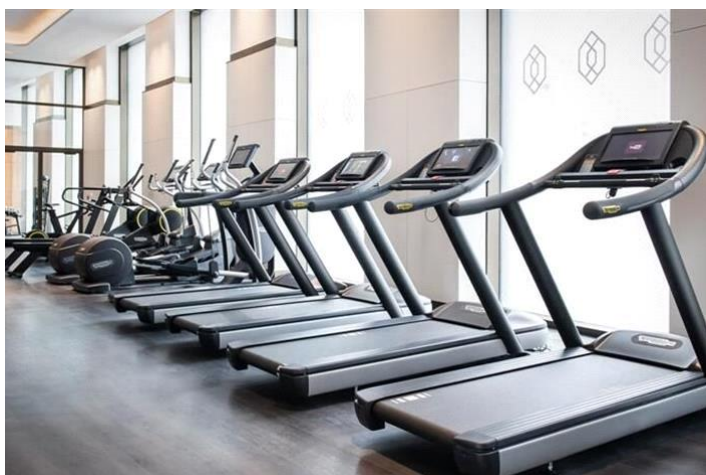
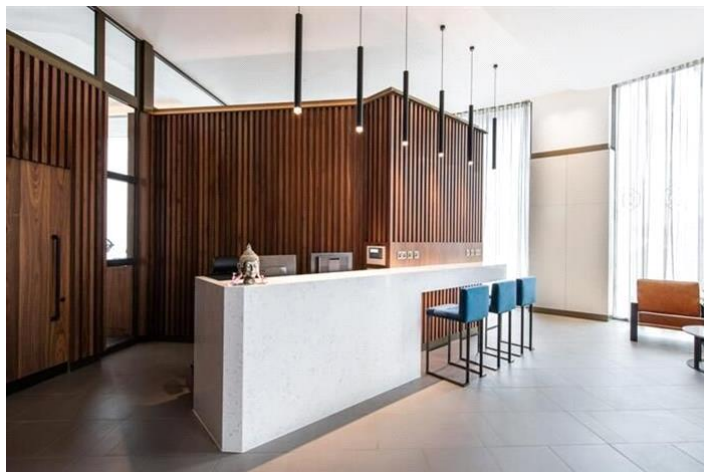
+44 (0)207 184 9888 | info@mayfairsquare.co.uk | www.mayfairsquare.co.uk



MAYFAIR SQUARE

1 Mayfair Place, London W1J 8AJ, United Kingdom

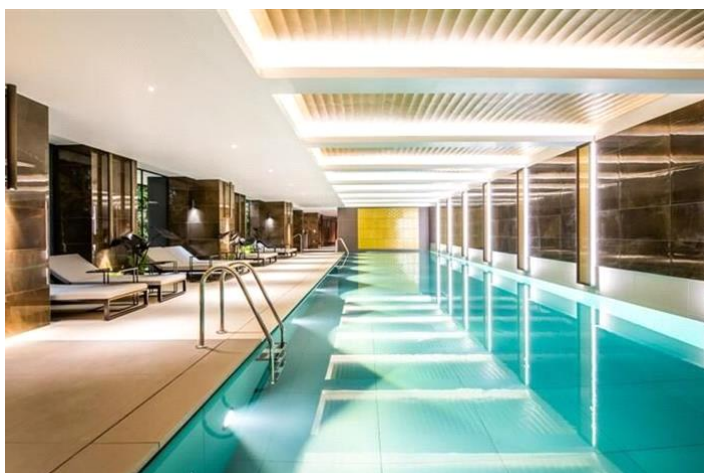
+44 (0)207 184 9888 | info@mayfairsquare.co.uk | www.mayfairsquare.co.uk



MAYFAIR SQUARE

1 Mayfair Place, London W1J 8AJ, United Kingdom

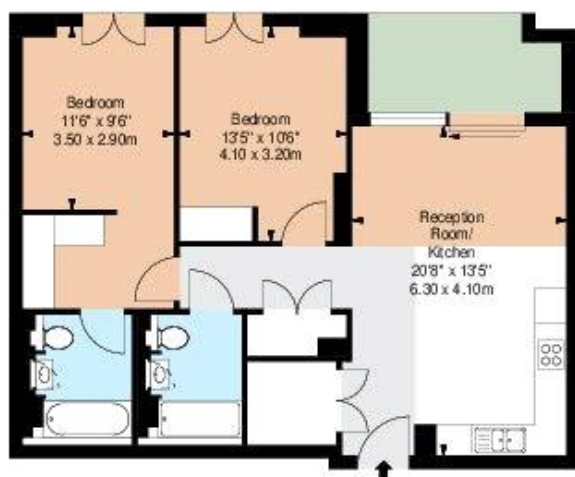
+44 (0)207 184 9888 | info@mayfairsquare.co.uk | www.mayfairsquare.co.uk



MAYFAIR SQUARE

1 Mayfair Place, London W1J 8AJ, United Kingdom

+44 (0)207 184 9888 | info@mayfairsquare.co.uk | www.mayfairsquare.co.uk



THIRD FLOOR

APPROX. GROSS INTERNAL AREA *
843 F1' - 78.31 M²

Proposed Details:
FLAT 31
GARRETT MANSIONS
WEST END GATE
EDGWARE ROAD
LONDON
W2

SCALE
1:100 @ A4
Plans Drawn: 14.01.2020



Hiddenway Work Space
1 Empire Mews
London
SW6 2BF

Tel: 0346 257 2025
info@bkrflorplans.co.uk
www.bkrflorplans.co.uk

© BKR 2020



MAYFAIR SQUARE

1 Mayfair Place, London W1J 8AJ, United Kingdom

+44 (0)207 184 9888 | info@mayfairsquare.co.uk | www.mayfairsquare.co.uk

GARRETT MANSIONS, LONDON W2

£1,750 PW



Energy Efficiency Rating		
	Current	Potential
Very energy efficient - lower running costs		
(92-100) A		
(81-91) B	86	86
(69-80) C		
(55-68) D		
(39-54) E		
(21-38) F		
(1-20) G		
Not energy efficient - higher running costs		
England & Wales		EU Directive 2002/91/EC

The energy efficiency rating is a measure of the overall efficiency of a home. The higher the rating the more energy efficient the home is and the lower the fuel bills will be.



MAYFAIR SQUARE

1 Mayfair Place, London W1J 8AJ, United Kingdom

+44 (0)207 184 9888 | info@mayfairsquare.co.uk | www.mayfairsquare.co.uk

GARRETT MANSIONS, LONDON W2

£1,750 PW

FOR MORE INFORMATION PLEASE CONTACT US

Important Notice:

Particulars: These particulars are not an offer or contract, nor part of one. You should not rely on statements by Mayfair Square in the particulars or by word of mouth or in writing ("information") as being factually accurate about the property, its condition or its value. Neither Mayfair Square nor any joint agent has any authority to make any representations about the property, and accordingly any information given is entirely without responsibility on the part of the agents, seller(s), lessor(s) or landlord(s).

Any areas, measurements or distances are approximate. The text, photographs and plans are for guidance only and are not necessarily comprehensive. Regulations etc: Any reference to alterations to, or use of, any part of the property does not mean that any necessary planning, building regulations or other consent has been obtained. A buyer or lessee must find out by inspection or in other ways that these matters have been properly dealt with and that all information is correct.



MAYFAIR SQUARE

1 Mayfair Place, London W1J 8AJ, United Kingdom

+44 (0)207 184 9888 | info@mayfairsquare.co.uk | www.mayfairsquare.co.uk
