

DUKE STREET, MAYFAIR, LONDON W1
£5,900 PW



MAYFAIR SQUARE

1 Mayfair Place, London W1J 8AJ, United Kingdom

+44 (0)207 184 9888 | info@mayfairsquare.co.uk | www.mayfairsquare.co.uk

DUKE STREET, MAYFAIR, LONDON W1

£5,900 PW

PROPERTY DESCRIPTION

Exquisite Three-Bedroom Luxury Apartment in the Heart of Mayfair.

Located in the heart of Mayfair, this exquisite three-bedroom, north-west facing apartment seamlessly blends classic elegance with modern luxury. Situated within a distinguished period building, the residence has been meticulously refurbished to the highest standards while retaining its charming architectural details. High ceilings, grand bay windows, intricate cornicing, and ornate fireplaces create a sophisticated atmosphere, while contemporary upgrades ensure a stylish and comfortable living experience. Offering an exceptional balance of historic charm and modern convenience, this home is perfect for those seeking refined living in one of London's most exclusive neighbourhoods.

Key Features:

- Spacious Living – 2,400 sq. ft. of refined interiors, including a grand reception room perfect for entertaining.
- Modern Kitchen & Dining – Bespoke cabinetry, integrated appliances, and a stylish breakfast bar.
- Three Luxurious Bedrooms – Each with en-suite bathrooms, including a master suite with dressing room and a second bedroom with private balcony.
- Additional Conveniences – Utility room, guest cloakroom, comfort cooling, and private storage on the lower ground floor.
- Exclusive Amenities – On-site concierge, lift access, and emergency out-of-hours service for added security and convenience.

Prime Mayfair Location

Moments from Hyde Park, Bond Street, and world-class dining and shopping, this apartment offers unparalleled luxury living in one of London's most prestigious addresses.

Contact us today to arrange a private viewing of this excellent apartment.



MAYFAIR SQUARE

1 Mayfair Place, London W1J 8AJ, United Kingdom

+44 (0)207 184 9888 | info@mayfairsquare.co.uk | www.mayfairsquare.co.uk

DUKE STREET, MAYFAIR, LONDON W1
£5,900 PW



MAYFAIR SQUARE

1 Mayfair Place, London W1J 8AJ, United Kingdom

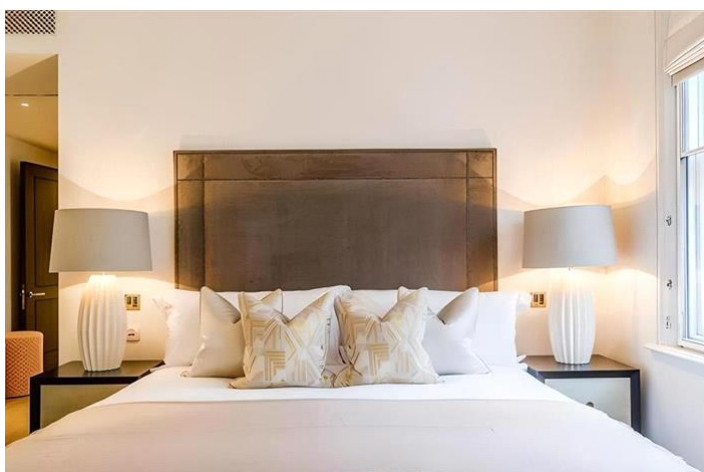
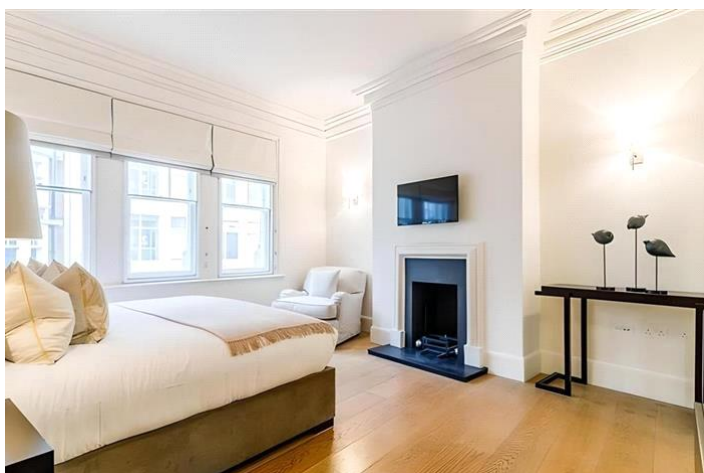
+44 (0)207 184 9888 | info@mayfairsquare.co.uk | www.mayfairsquare.co.uk



MAYFAIR SQUARE

1 Mayfair Place, London W1J 8AJ, United Kingdom

+44 (0)207 184 9888 | info@mayfairsquare.co.uk | www.mayfairsquare.co.uk



MAYFAIR SQUARE

1 Mayfair Place, London W1J 8AJ, United Kingdom

+44 (0)207 184 9888 | info@mayfairsquare.co.uk | www.mayfairsquare.co.uk



MAYFAIR SQUARE

1 Mayfair Place, London W1J 8AJ, United Kingdom

+44 (0)207 184 9888 | info@mayfairsquare.co.uk | www.mayfairsquare.co.uk



SECOND FLOOR

Property Data

**FLAT 2,
65 DUK
W1**

APPROX. GROSS INTERNAL AREA *
2394 Ft² - 222.40 M²

Plans C



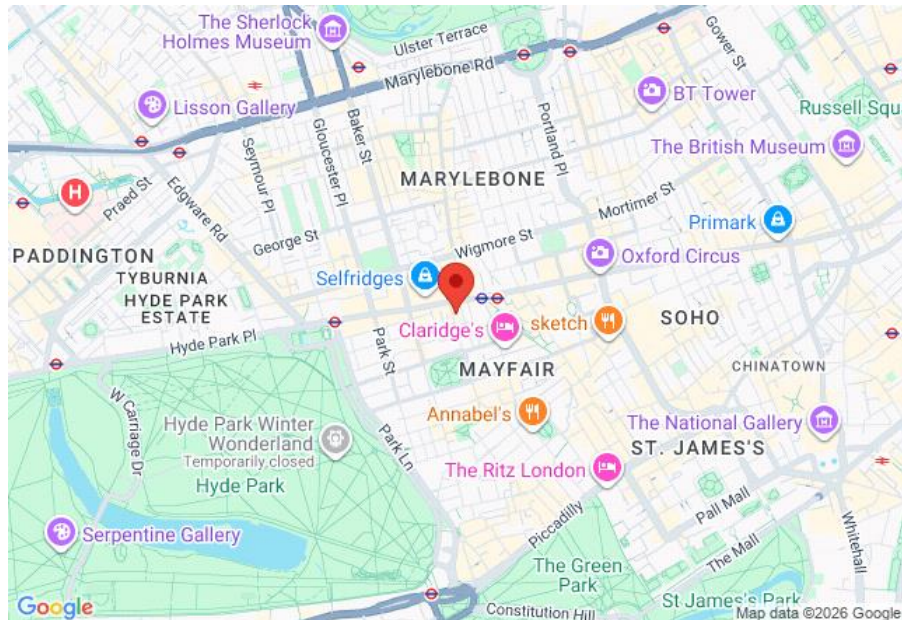
MAYFAIR SQUARE

1 Mayfair Place, London W1J 8AJ, United Kingdom

+44 (0)207 184 9888 | info@mayfairsquare.co.uk | www.mayfairsquare.co.uk

DUKE STREET, MAYFAIR, LONDON W1

£5,900 PW



Energy Efficiency Rating		
	Current	Potential
Very energy efficient - lower running costs		
(92-100) A		
(81-91) B		
(69-80) C		
(55-68) D		
(39-54) E		
(21-38) F		
(1-20) G		
Not energy efficient - higher running costs		
	72	82
England & Wales	EU Directive 2002/91/EC	

The energy efficiency rating is a measure of the overall efficiency of a home. The higher the rating the more energy efficient the home is and the lower the fuel bills will be.



MAYFAIR SQUARE

1 Mayfair Place, London W1J 8AJ, United Kingdom

+44 (0)207 184 9888 | info@mayfairsquare.co.uk | www.mayfairsquare.co.uk

DUKE STREET, MAYFAIR, LONDON W1

£5,900 PW

FOR MORE INFORMATION PLEASE CONTACT US

Important Notice:

Particulars: These particulars are not an offer or contract, nor part of one. You should not rely on statements by Mayfair Square in the particulars or by word of mouth or in writing ("information") as being factually accurate about the property, its condition or its value. Neither Mayfair Square nor any joint agent has any authority to make any representations about the property, and accordingly any information given is entirely without responsibility on the part of the agents, seller(s), lessor(s) or landlord(s).

Any areas, measurements or distances are approximate. The text, photographs and plans are for guidance only and are not necessarily comprehensive. Regulations etc: Any reference to alterations to, or use of, any part of the property does not mean that any necessary planning, building regulations or other consent has been obtained. A buyer or lessee must find out by inspection or in other ways that these matters have been properly dealt with and that all information is correct.



MAYFAIR SQUARE

1 Mayfair Place, London W1J 8AJ, United Kingdom

+44 (0)207 184 9888 | info@mayfairsquare.co.uk | www.mayfairsquare.co.uk
