

MARCHMONT STREET, BLOOMSBURY, LONDON

£850 PW



MAYFAIR SQUARE

1 Mayfair Place, London W1J 8AJ, United Kingdom

+44 (0)207 184 9888 | info@mayfairsquare.co.uk | www.mayfairsquare.co.uk

MARCHMONT STREET, BLOOMSBURY, LONDON

£850 PW

PROPERTY DESCRIPTION

Short Let – Excellent One-Bedroom Apartment in the Heart of Bloomsbury.

This beautifully presented one-bedroom apartment offers stylish and flexible living in the very heart of Bloomsbury. Spanning over 500 sq ft, the property is ideal for professionals, academics, or students seeking a well-located short-term residence in Central London.

The apartment features a spacious living room that flows seamlessly into a modern open-plan kitchen, finished with sleek contemporary fittings and complemented by a dedicated dining area, perfect for both everyday living and entertaining.

Ideally positioned just moments from The Brunswick Centre, residents benefit from access to an architecturally renowned and vibrant community hub offering a superb range of high-quality shops, including Waitrose, as well as an excellent selection of cafes and restaurants. For entertainment, the Curzon Cinema is conveniently located on-site.

The property is exceptionally well connected, with Russell Square Underground Station (Piccadilly Line) just a short walk away, while King's Cross St Pancras International is also easily accessible, offering national and international transport links.

All bills except council tax included, minimum 3 months short Let.

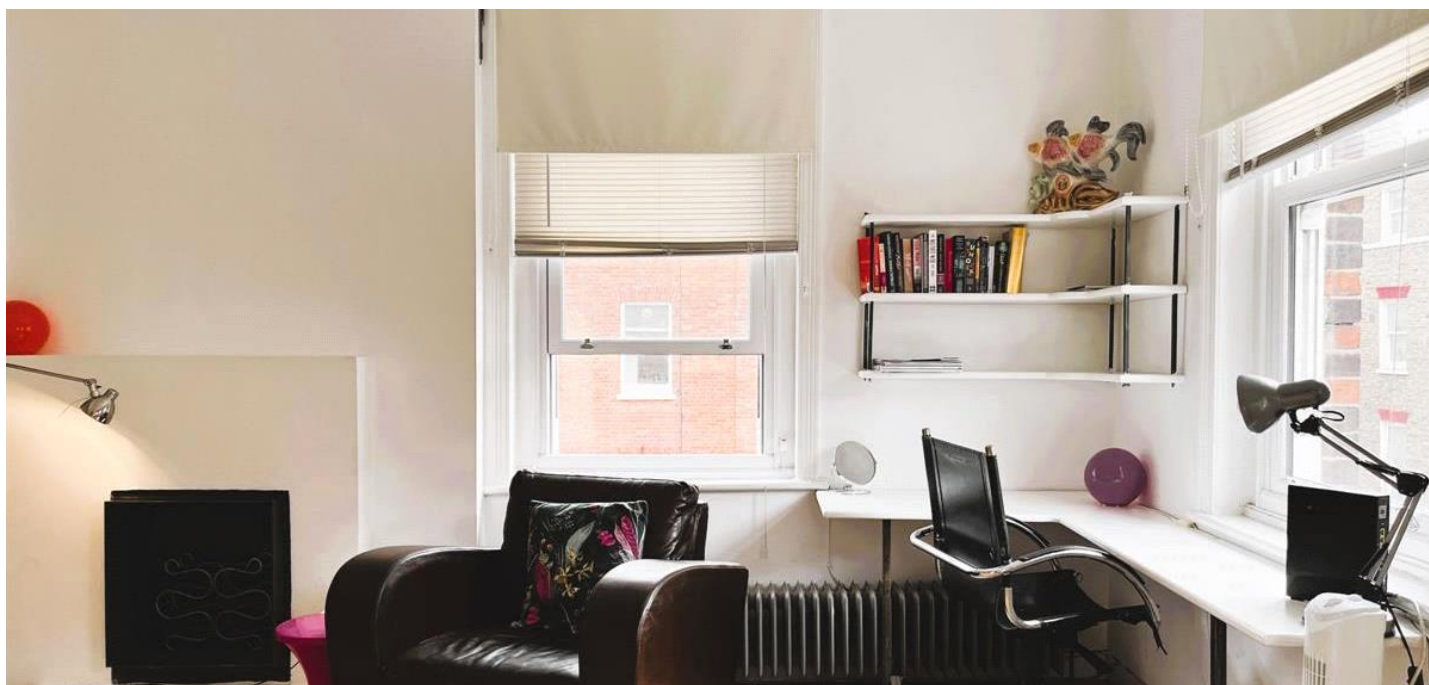
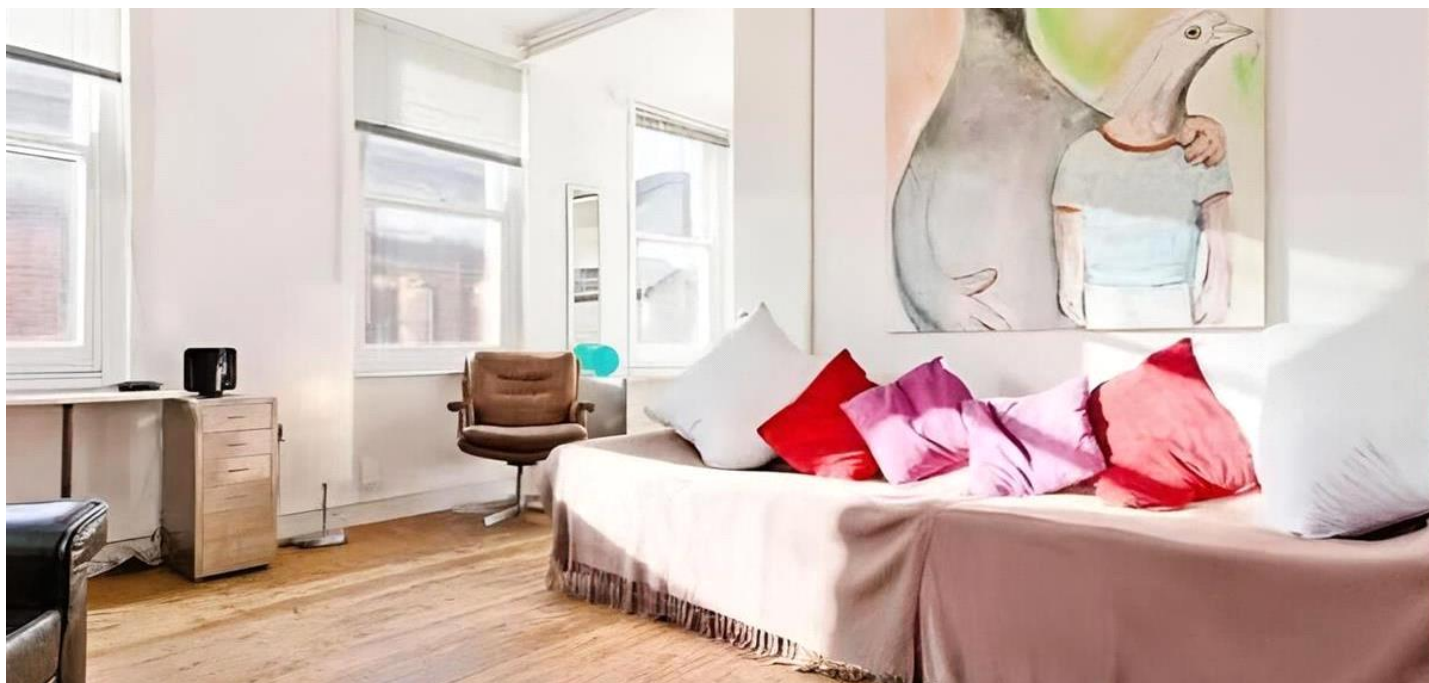


MAYFAIR SQUARE

1 Mayfair Place, London W1J 8AJ, United Kingdom

+44 (0)207 184 9888 | info@mayfairsquare.co.uk | www.mayfairsquare.co.uk

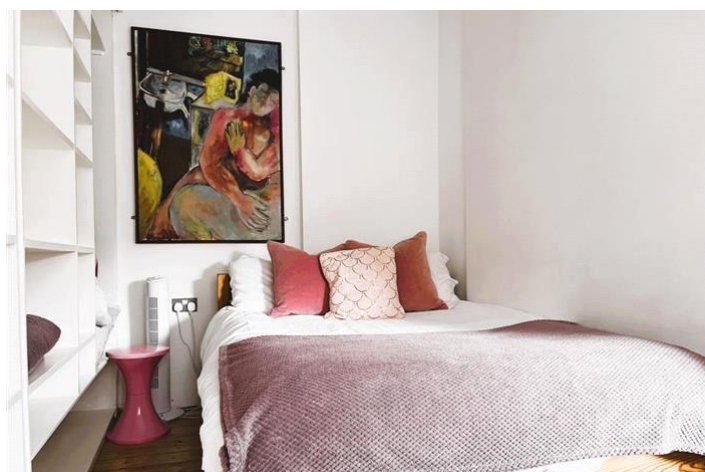
MARCHMONT STREET, BLOOMSBURY, LONDON
£850 PW



MAYFAIR SQUARE

1 Mayfair Place, London W1J 8AJ, United Kingdom

+44 (0)207 184 9888 | info@mayfairsquare.co.uk | www.mayfairsquare.co.uk



MAYFAIR SQUARE

1 Mayfair Place, London W1J 8AJ, United Kingdom

+44 (0)207 184 9888 | info@mayfairsquare.co.uk | www.mayfairsquare.co.uk



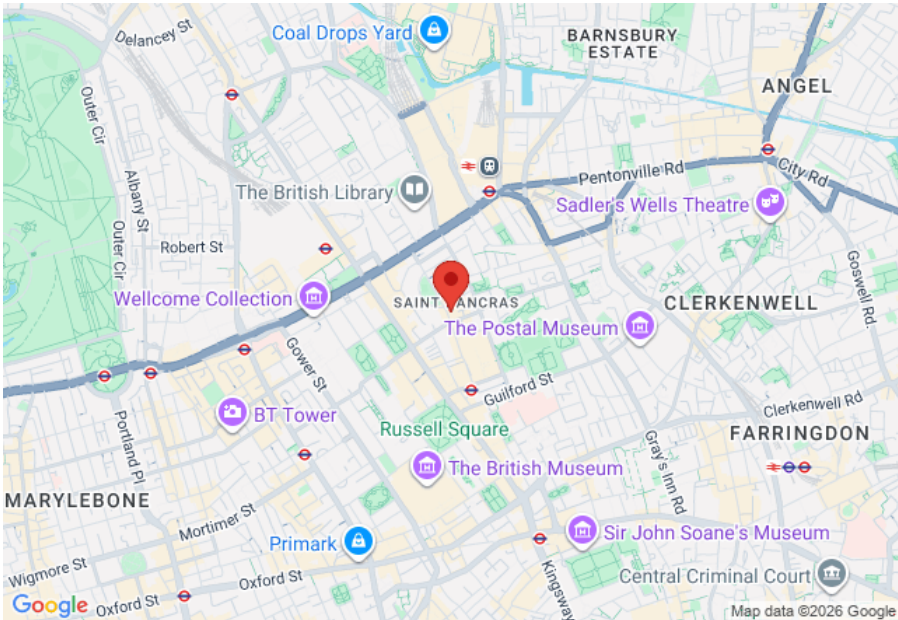
MAYFAIR SQUARE

1 Mayfair Place, London W1J 8AJ, United Kingdom

+44 (0)207 184 9888 | info@mayfairsquare.co.uk | www.mayfairsquare.co.uk

MARCHMONT STREET, BLOOMSBURY, LONDON

£850 PW



Energy Efficiency Rating		
	Current	Potential
Very energy efficient - lower running costs		
(92-100) A		
(81-91) B		
(69-80) C		
(55-68) D		
(39-54) E		
(21-38) F		
(1-20) G		
Not energy efficient - higher running costs		
England & Wales	EU Directive 2002/91/EC	

The energy efficiency rating is a measure of the overall efficiency of a home. The higher the rating the more energy efficient the home is and the lower the fuel bills will be.



MAYFAIR SQUARE

1 Mayfair Place, London W1J 8AJ, United Kingdom

+44 (0)207 184 9888 | info@mayfairsquare.co.uk | www.mayfairsquare.co.uk

MARCHMONT STREET, BLOOMSBURY, LONDON

£850 PW

FOR MORE INFORMATION PLEASE CONTACT US

Important Notice:

Particulars: These particulars are not an offer or contract, nor part of one. You should not rely on statements by Mayfair Square in the particulars or by word of mouth or in writing ("information") as being factually accurate about the property, its condition or its value. Neither Mayfair Square nor any joint agent has any authority to make any representations about the property, and accordingly any information given is entirely without responsibility on the part of the agents, seller(s), lessor(s) or landlord(s).

Any areas, measurements or distances are approximate. The text, photographs and plans are for guidance only and are not necessarily comprehensive. Regulations etc: Any reference to alterations to, or use of, any part of the property does not mean that any necessary planning, building regulations or other consent has been obtained. A buyer or lessee must find out by inspection or in other ways that these matters have been properly dealt with and that all information is correct.



MAYFAIR SQUARE

1 Mayfair Place, London W1J 8AJ, United Kingdom

+44 (0)207 184 9888 | info@mayfairsquare.co.uk | www.mayfairsquare.co.uk
