

ST JOHN'S WOOD, LONDON NW8
£2,020 PW



MAYFAIR SQUARE

1 Mayfair Place, London W1J 8AJ, United Kingdom

+44 (0)207 184 9888 | info@mayfairsquare.co.uk | www.mayfairsquare.co.uk

ST JOHN'S WOOD, LONDON NW8

£2,020 PW

PROPERTY DESCRIPTION

Beautiful five-bedroom apartment, situated on the first floor of a prestigious mansion block. With over 2362 sq ft of exquisite living space, this residence offers a truly remarkable experience. The apartment offers beautiful views over Regents Park, creating a serene and picturesque backdrop and boasts ample storage space, ensuring a clutter-free environment. The double-volume reception room exudes sophistication, providing a grand space for entertaining and relaxation.

This remarkable apartment features five spacious bedrooms, two family-size bathrooms, providing ample accommodation for both residents and guests. Each room is thoughtfully designed to offer comfort, privacy, and a sense of luxury. The fitted kitchen and dining offers a perfect setting for culinary delights and shared meals.

Location-wise, this apartment offers easy access to renowned landmarks such as Lords Cricket Ground and the expansive Regent's Park. Immerse yourself in the vibrant atmosphere of St John's Wood High Street, with its array of shops, bars, and restaurants, catering to your every need.

Financial Summary:

- Holding Deposit= £2,030 (1 week's rent- this is taken off the total security deposit)
- Security Deposit= £6,766.67 (1 calendar month's rent, less holding deposit)
- 1 calendar months rent= £8,796.67

Total amount payable= £17,593.33

Council Tax band- H

EPC rating- C

Strathmore Court is a prestigious Art Deco Mansion block located in one of NW8's premier residential locations, with apartments benefiting from fabulous views over Regent's Park. The property benefits from a lift, portorage and is close to the myriad of shopping opportunities of the West End.

The building is close to the famous Lords Cricket ground and opposite the beautiful Grade I listed Regent's Park, home to London Zoo. The award winning St John's Wood High Street is a few minutes away, with numerous boutique shops, vibrant bars and high end restaurants.

Strathmore Court would be ideally suited to young professionals or students due to its proximity to the West End, as well as a number of top colleges and universities such as London Business School, University of Westminster and the Royal College of Physicians.

The apartment benefits from a Westminster parking permit.



MAYFAIR SQUARE

1 Mayfair Place, London W1J 8AJ, United Kingdom

+44 (0)207 184 9888 | info@mayfairsquare.co.uk | www.mayfairsquare.co.uk

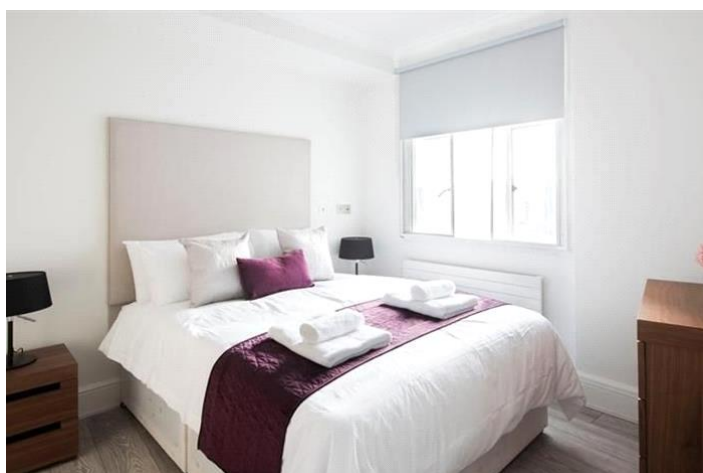
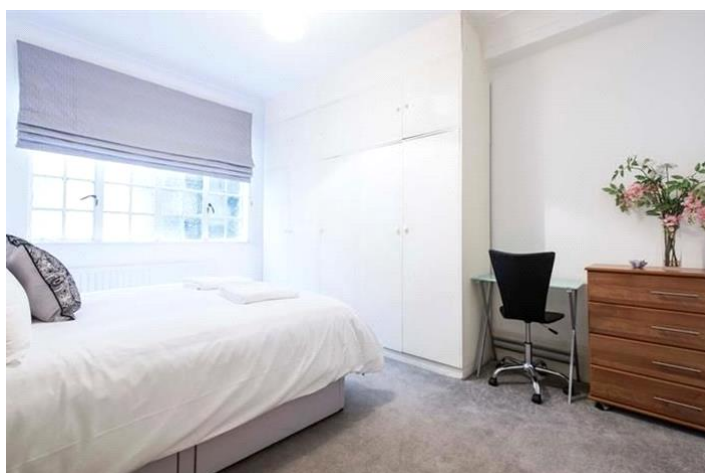
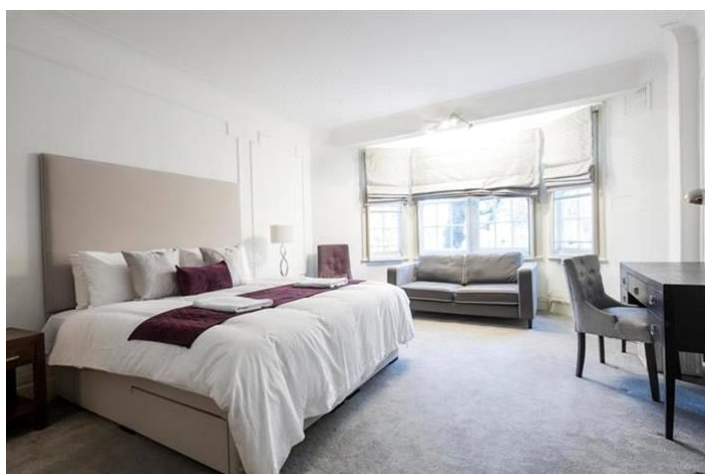
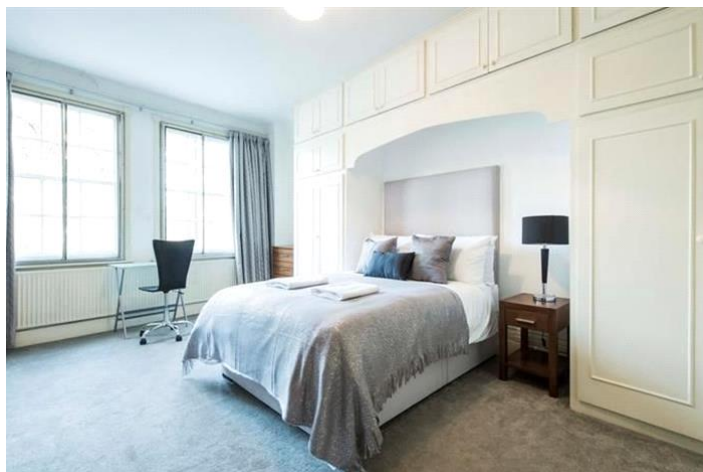
ST JOHN'S WOOD, LONDON NW8
£2,020 PW



MAYFAIR SQUARE

1 Mayfair Place, London W1J 8AJ, United Kingdom

+44 (0)207 184 9888 | info@mayfairsquare.co.uk | www.mayfairsquare.co.uk



MAYFAIR SQUARE

1 Mayfair Place, London W1J 8AJ, United Kingdom

+44 (0)207 184 9888 | info@mayfairsquare.co.uk | www.mayfairsquare.co.uk



MAYFAIR SQUARE

1 Mayfair Place, London W1J 8AJ, United Kingdom

+44 (0)207 184 9888 | info@mayfairsquare.co.uk | www.mayfairsquare.co.uk



**FLAT 14
STRATHMORE COURT
PARK ROAD NW8**

First Floor

Approx Gross Internal Area*

2362 Ft² - 219.43 M²

* As Defined by RICS - Code of Measuring Practice

Illustration For Identification Purposes Only. Not to Scale
All Calculations include Any/All Areas Under 1.5m Head Height.

Surveyed and Drawn By:

B K R

Surreyhill House, 3-7 Surreyhill Road
London, SW15 2UG

Tel: 0845 257 2023
Fax: 0845 257 2024
info@bkr.co.uk
www.bkr.co.uk
(C) BKR 2014



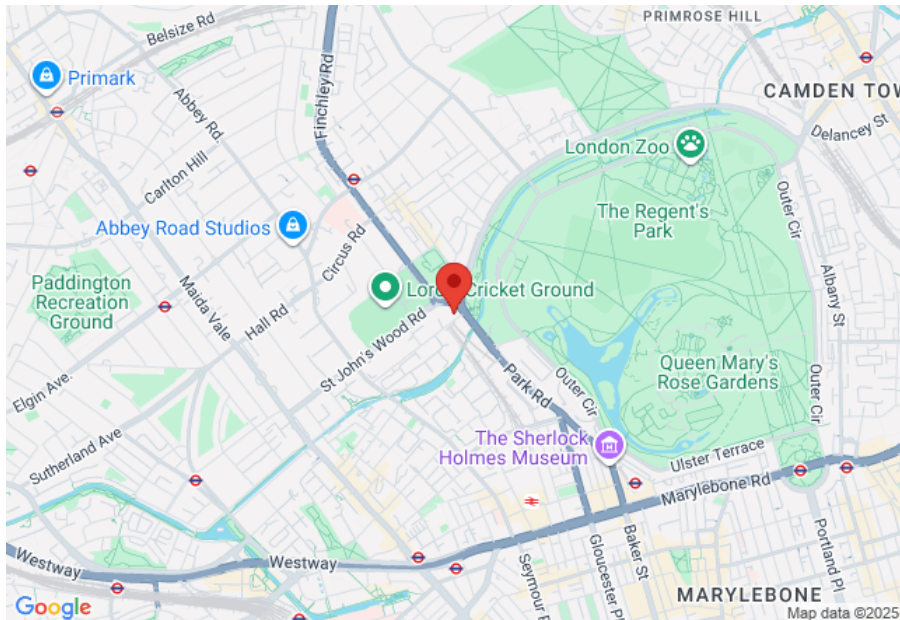
MAYFAIR SQUARE

1 Mayfair Place, London W1J 8AJ, United Kingdom

+44 (0)207 184 9888 | info@mayfairsquare.co.uk | www.mayfairsquare.co.uk

ST JOHN'S WOOD, LONDON NW8

£2,020 PW



Energy Efficiency Rating		
	Current	Potential
Very energy efficient - lower running costs		
(92-100) A		
(81-91) B		
(69-80) C		
(55-68) D	70	74
(39-54) E		
(21-38) F		
(1-20) G		
Not energy efficient - higher running costs		
England & Wales		
EU Directive 2002/91/EC		

The energy efficiency rating is a measure of the overall efficiency of a home. The higher the rating the more energy efficient the home is and the lower the fuel bills will be.



MAYFAIR SQUARE

1 Mayfair Place, London W1J 8AJ, United Kingdom

+44 (0)207 184 9888 | info@mayfairsquare.co.uk | www.mayfairsquare.co.uk

ST JOHN'S WOOD, LONDON NW8

£2,020 PW

FOR MORE INFORMATION PLEASE CONTACT US

Important Notice:

Particulars: These particulars are not an offer or contract, nor part of one. You should not rely on statements by Mayfair Square in the particulars or by word of mouth or in writing ("information") as being factually accurate about the property, its condition or its value. Neither Mayfair Square nor any joint agent has any authority to make any representations about the property, and accordingly any information given is entirely without responsibility on the part of the agents, seller(s), lessor(s) or landlord(s).

Any areas, measurements or distances are approximate. The text, photographs and plans are for guidance only and are not necessarily comprehensive. Regulations etc: Any reference to alterations to, or use of, any part of the property does not mean that any necessary planning, building regulations or other consent has been obtained. A buyer or lessee must find out by inspection or in other ways that these matters have been properly dealt with and that all information is correct.



MAYFAIR SQUARE

1 Mayfair Place, London W1J 8AJ, United Kingdom

+44 (0)207 184 9888 | info@mayfairsquare.co.uk | www.mayfairsquare.co.uk
