

GREAT PORTLAND STREET, MARYLEBONE, LONDON

£1,327 PW



MAYFAIR SQUARE

1 Mayfair Place, London W1J 8AJ, United Kingdom

+44 (0)207 184 9888 | info@mayfairsquare.co.uk | www.mayfairsquare.co.uk

GREAT PORTLAND STREET, MARYLEBONE, LONDON

£1,327 PW

PROPERTY DESCRIPTION

Exceptional Three-Bedroom Duplex Apartment with Private Terrace in the Heart of Marylebone.

Discover this stunning and well-maintained three-bedroom duplex apartment, offering a perfect blend of original charm, modern elegance, and high-quality finishes. Ideally located in Marylebone, this beautifully designed residence provides spacious interiors, abundant natural light, and a private terrace, making it a must-see for those seeking a luxurious London home.

Key Features:

- * Spacious Duplex Layout – Spread over two floors, offering a sense of space and privacy.
- * Three Generously Sized Double Bedrooms – Featuring high ceilings, large windows, and abundant natural light.
- * Elegant Reception Room – Bay windows overlooking Great Portland Street, creating an inviting space for relaxation and entertaining.
- * Characterful Kitchen with Modern Finishes – Showcasing exposed brickwork, high-quality appliances, and stylish details.
- * Private Terrace – A perfect outdoor retreat for relaxation and entertaining.
- * Dedicated Reading Area – A cozy space designed for quiet moments.
- * Spanning Over 1,100 sq. ft. – A rare combination of size, style, and prime location.
- * High-Quality Finishes Throughout – Well-maintained interiors with elegant features.

Living in Marylebone – A Coveted London Lifestyle

Marylebone is one of London's most desirable neighbourhoods, known for its Georgian architecture, boutique shops, and a vibrant village atmosphere. Residents enjoy:

- Marylebone High Street – Home to artisan cafés, fine dining, and independent boutiques.
- Regent's Park – Just moments away, featuring beautiful gardens, a boating lake, and the Open Air Theatre.
- Cultural & Historic Attractions – Close to The Wallace Collection, Manchester Square, and Montagu Square.
- Seasonal Events – Marylebone Village transforms during the festive season with its famous Christmas Lights Switch-On, live music, and local celebrations.

This exceptional three-bedroom duplex apartment in Marylebone offers an unparalleled blend of space, character, and modern luxury, making it a truly outstanding home in one of London's most prestigious locations.

Arrange a private viewing today with our team at Mayfair Square to experience this remarkable property.



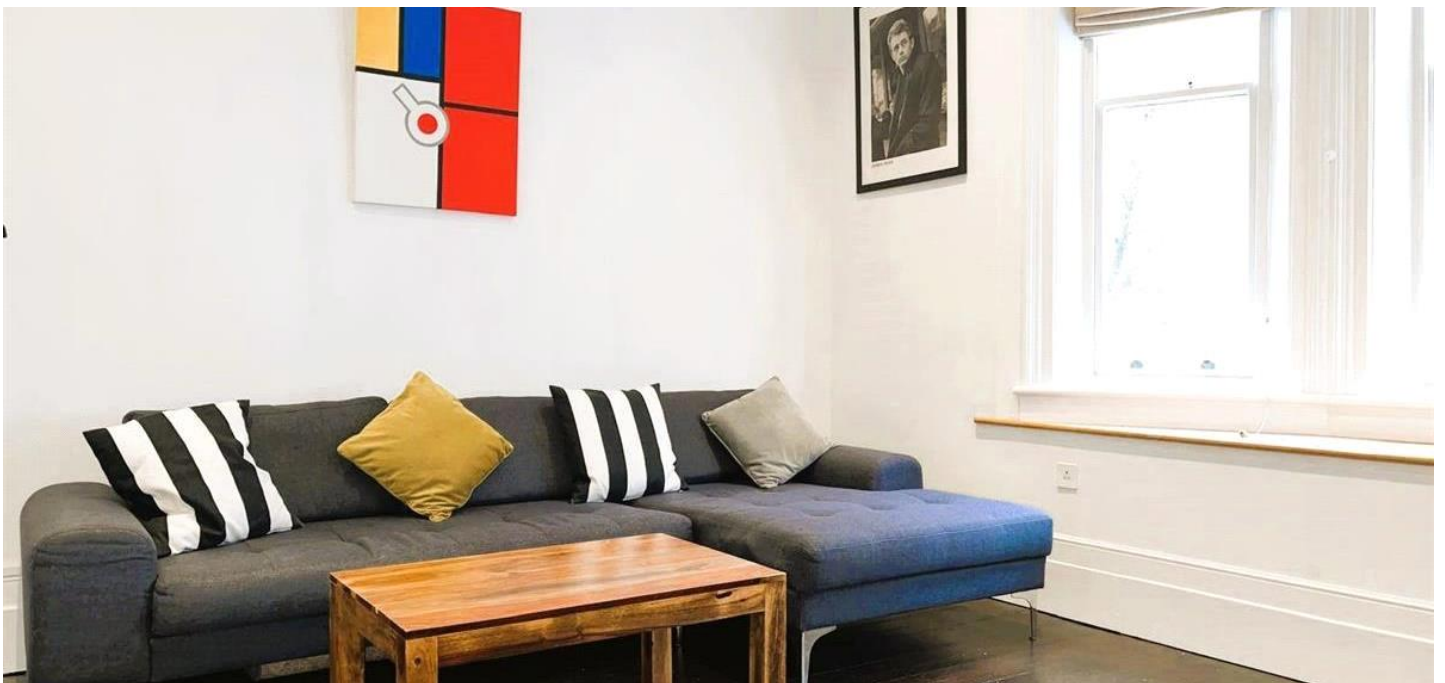
MAYFAIR SQUARE

1 Mayfair Place, London W1J 8AJ, United Kingdom

+44 (0)207 184 9888 | info@mayfairsquare.co.uk | www.mayfairsquare.co.uk

GREAT PORTLAND STREET, MARYLEBONE, LONDON

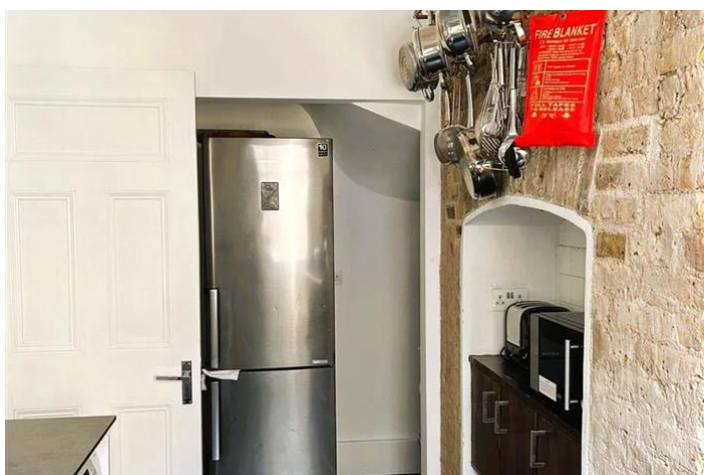
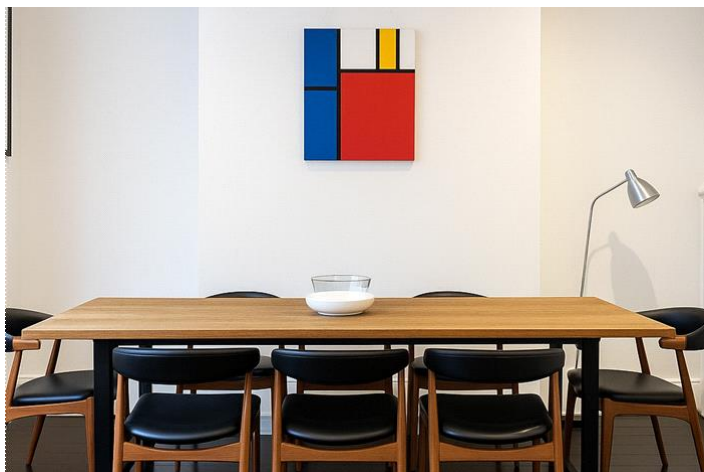
£1,327 PW



MAYFAIR SQUARE

1 Mayfair Place, London W1J 8AJ, United Kingdom

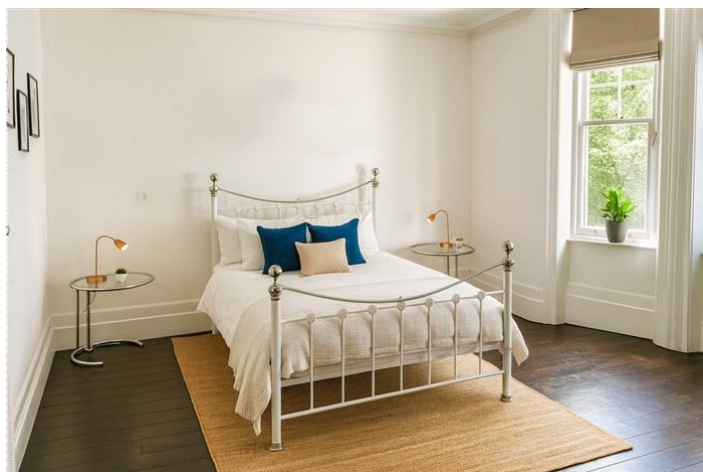
+44 (0)207 184 9888 | info@mayfairsquare.co.uk | www.mayfairsquare.co.uk



MAYFAIR SQUARE

1 Mayfair Place, London W1J 8AJ, United Kingdom

+44 (0)207 184 9888 | info@mayfairsquare.co.uk | www.mayfairsquare.co.uk



MAYFAIR SQUARE

1 Mayfair Place, London W1J 8AJ, United Kingdom

+44 (0)207 184 9888 | info@mayfairsquare.co.uk | www.mayfairsquare.co.uk



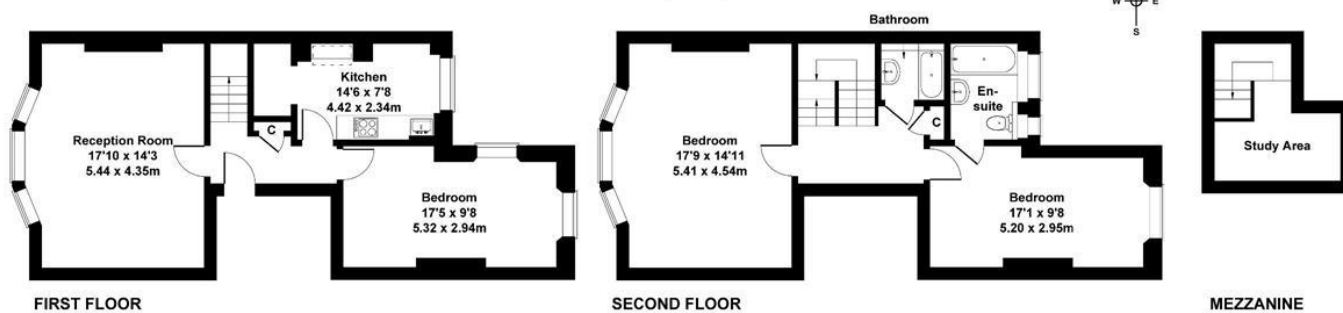
MAYFAIR SQUARE

1 Mayfair Place, London W1J 8AJ, United Kingdom

+44 (0)207 184 9888 | info@mayfairsquare.co.uk | www.mayfairsquare.co.uk

Great Portland Street

Approximate Gross Internal Area
1140 sq ft - 106 sq m



Not to Scale.
For Illustrative Purposes Only.



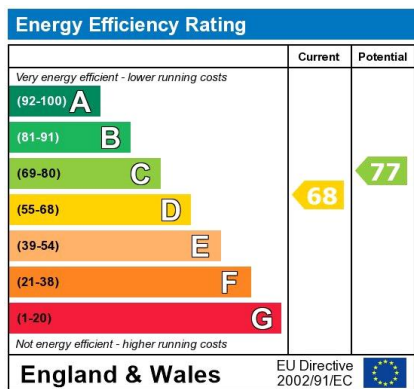
MAYFAIR SQUARE

1 Mayfair Place, London W1J 8AJ, United Kingdom

+44 (0)207 184 9888 | info@mayfairsquare.co.uk | www.mayfairsquare.co.uk

GREAT PORTLAND STREET, MARYLEBONE, LONDON

£1,327 PW



The energy efficiency rating is a measure of the overall efficiency of a home. The higher the rating the more energy efficient the home is and the lower the fuel bills will be.



MAYFAIR SQUARE

1 Mayfair Place, London W1J 8AJ, United Kingdom

+44 (0)207 184 9888 | info@mayfairsquare.co.uk | www.mayfairsquare.co.uk

GREAT PORTLAND STREET, MARYLEBONE, LONDON

£1,327 PW

FOR MORE INFORMATION PLEASE CONTACT US

Important Notice:

Particulars: These particulars are not an offer or contract, nor part of one. You should not rely on statements by Mayfair Square in the particulars or by word of mouth or in writing ("information") as being factually accurate about the property, its condition or its value. Neither Mayfair Square nor any joint agent has any authority to make any representations about the property, and accordingly any information given is entirely without responsibility on the part of the agents, seller(s), lessor(s) or landlord(s).

Any areas, measurements or distances are approximate. The text, photographs and plans are for guidance only and are not necessarily comprehensive. Regulations etc: Any reference to alterations to, or use of, any part of the property does not mean that any necessary planning, building regulations or other consent has been obtained. A buyer or lessee must find out by inspection or in other ways that these matters have been properly dealt with and that all information is correct.



MAYFAIR SQUARE

1 Mayfair Place, London W1J 8AJ, United Kingdom

+44 (0)207 184 9888 | info@mayfairsquare.co.uk | www.mayfairsquare.co.uk
