

HYDE PARK GARDENS, LONDON W2

£1,385 PW



MAYFAIR SQUARE

1 Mayfair Place, London W1J 8AJ, United Kingdom

+44 (0)207 184 9888 | info@mayfairsquare.co.uk | www.mayfairsquare.co.uk

HYDE PARK GARDENS, LONDON W2

£1,385 PW

PROPERTY DESCRIPTION

Exceptional Two-Bedroom Apartment with Stunning Views of Hyde Park.

This impressive two-bedroom lateral apartment, spanning 915 sq ft, is located on the third floor of a gated, stucco-fronted building, offering a harmonious blend of elegance and contemporary living.

The property boasts stunning views of Hyde Park, creating a serene and picturesque backdrop. The apartment features a spacious open-plan reception room with a dedicated dining area, perfect for both entertaining and relaxation. Adjacent to the living space is a separate, well-appointed kitchen, thoughtfully designed to meet modern lifestyle needs.

The accommodation comprises two generously sized bedrooms, each offering comfort and style. Two beautifully finished bathrooms further enhance the sense of luxury and practicality within the home.

Set within a gated building, residents enjoy the added benefit of access to private communal gardens, providing a tranquil retreat amidst the vibrancy of the surrounding area. The property's stucco-fronted exterior adds a touch of timeless charm to this exclusive address.

Hyde Park Gardens is nestled in the heart of the prestigious W2 postcode, seamlessly combining tranquillity with cosmopolitan allure. The apartment enjoys an enviable location, close to the charming local amenities of Connaught Village and the world-class boutiques and dining establishments of Mayfair and the West End.

At the heart of the area lies Hyde Park, one of London's most iconic green spaces, offering over 350 acres of open space and natural beauty.

The location boasts exceptional transport links, with Lancaster Gate Underground Station just 0.3 miles away and Paddington Station, 0.4 miles from the property, offering the Heathrow Express for fast and convenient travel to Heathrow Airport.



MAYFAIR SQUARE

1 Mayfair Place, London W1J 8AJ, United Kingdom

+44 (0)207 184 9888 | info@mayfairsquare.co.uk | www.mayfairsquare.co.uk

HYDE PARK GARDENS, LONDON W2

£1,385 PW



MAYFAIR SQUARE

1 Mayfair Place, London W1J 8AJ, United Kingdom

+44 (0)207 184 9888 | info@mayfairsquare.co.uk | www.mayfairsquare.co.uk



MAYFAIR SQUARE

1 Mayfair Place, London W1J 8AJ, United Kingdom

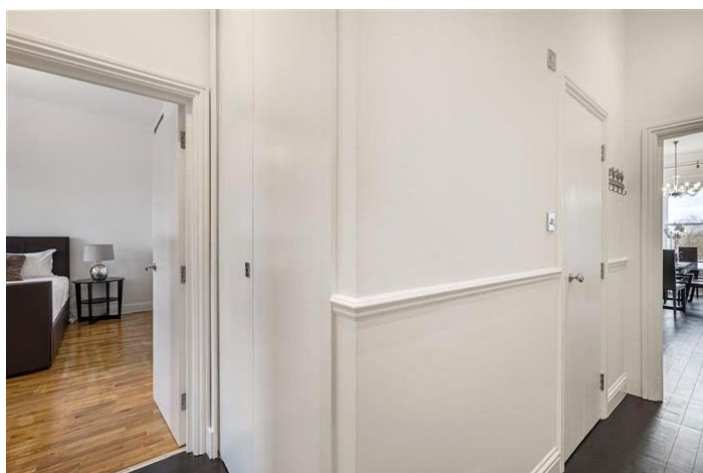
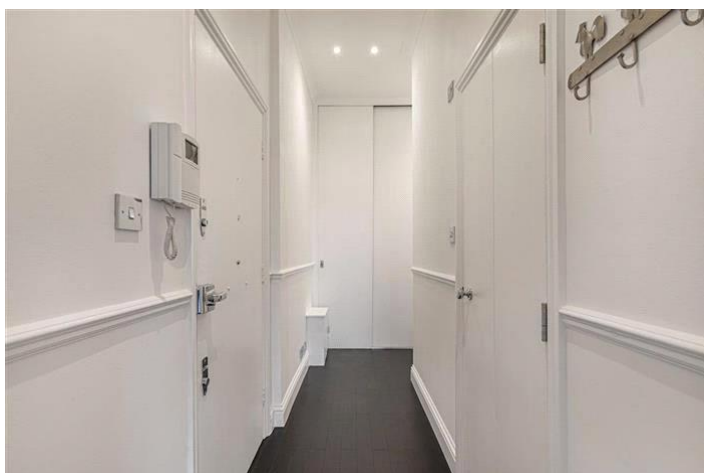
+44 (0)207 184 9888 | info@mayfairsquare.co.uk | www.mayfairsquare.co.uk



MAYFAIR SQUARE

1 Mayfair Place, London W1J 8AJ, United Kingdom

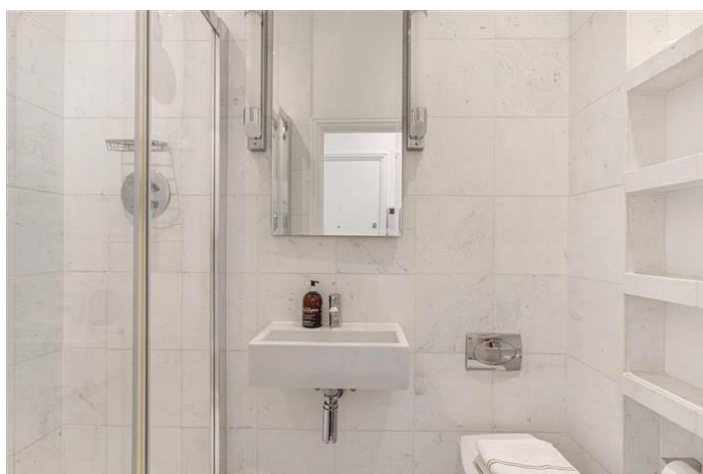
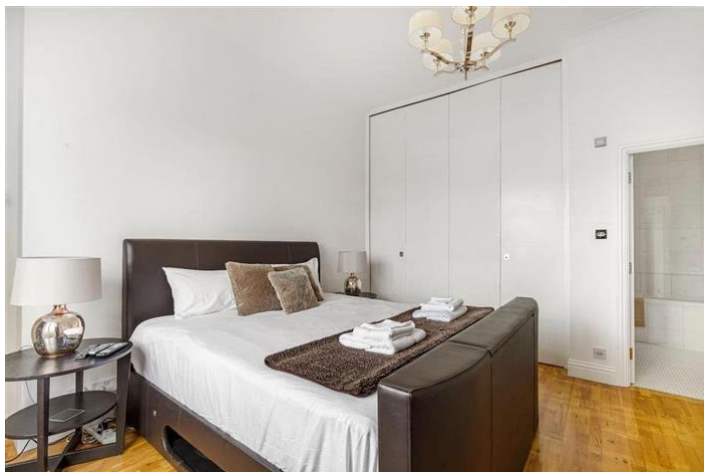
+44 (0)207 184 9888 | info@mayfairsquare.co.uk | www.mayfairsquare.co.uk



MAYFAIR SQUARE

1 Mayfair Place, London W1J 8AJ, United Kingdom

+44 (0)207 184 9888 | info@mayfairsquare.co.uk | www.mayfairsquare.co.uk

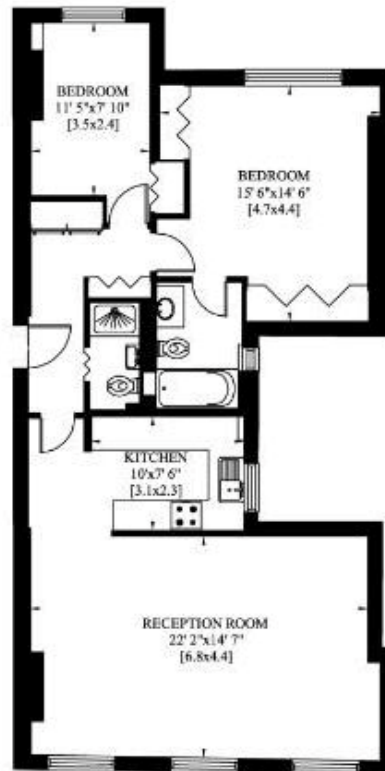


MAYFAIR SQUARE

1 Mayfair Place, London W1J 8AJ, United Kingdom

+44 (0)207 184 9888 | info@mayfairsquare.co.uk | www.mayfairsquare.co.uk

Hyde Park Gardens



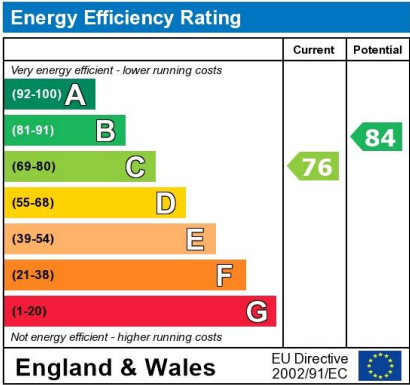
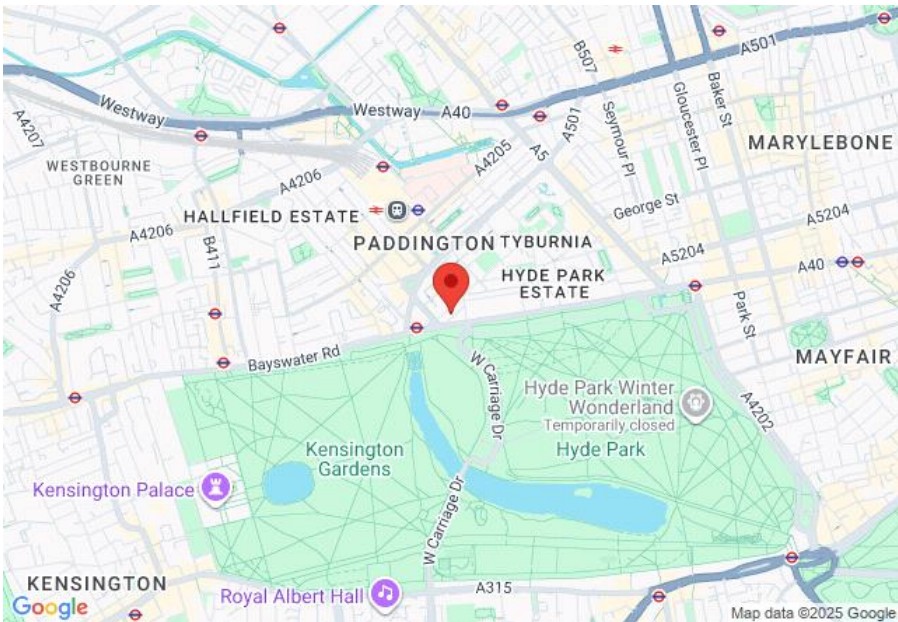
MAYFAIR SQUARE

1 Mayfair Place, London W1J 8AJ, United Kingdom

+44 (0)207 184 9888 | info@mayfairsquare.co.uk | www.mayfairsquare.co.uk

HYDE PARK GARDENS, LONDON W2

£1,385 PW



The energy efficiency rating is a measure of the overall efficiency of a home. The higher the rating the more energy efficient the home is and the lower the fuel bills will be.



MAYFAIR SQUARE

1 Mayfair Place, London W1J 8AJ, United Kingdom

+44 (0)207 184 9888 | info@mayfairsquare.co.uk | www.mayfairsquare.co.uk

HYDE PARK GARDENS, LONDON W2

£1,385 PW

FOR MORE INFORMATION PLEASE CONTACT US

Important Notice:

Particulars: These particulars are not an offer or contract, nor part of one. You should not rely on statements by Mayfair Square in the particulars or by word of mouth or in writing ("information") as being factually accurate about the property, its condition or its value. Neither Mayfair Square nor any joint agent has any authority to make any representations about the property, and accordingly any information given is entirely without responsibility on the part of the agents, seller(s), lessor(s) or landlord(s).

Any areas, measurements or distances are approximate. The text, photographs and plans are for guidance only and are not necessarily comprehensive. Regulations etc: Any reference to alterations to, or use of, any part of the property does not mean that any necessary planning, building regulations or other consent has been obtained. A buyer or lessee must find out by inspection or in other ways that these matters have been properly dealt with and that all information is correct.



MAYFAIR SQUARE

1 Mayfair Place, London W1J 8AJ, United Kingdom

+44 (0)207 184 9888 | info@mayfairsquare.co.uk | www.mayfairsquare.co.uk
