

# PETERSHAM MEWS, LONDON SW7

£2,975,000



## MAYFAIR SQUARE

1 Mayfair Place, London W1J 8AJ, United Kingdom

+44 (0)207 184 9888 | [info@mayfairsquare.co.uk](mailto:info@mayfairsquare.co.uk) | [www.mayfairsquare.co.uk](http://www.mayfairsquare.co.uk)

# PETERSHAM MEWS, LONDON SW7

£2,975,000

---

## PROPERTY DESCRIPTION

This impressive mews house offers 211.72 sq m (2,279 sq ft) of beautifully designed living space, arranged over four floors. The property features three bedroom suites, a reception room, and a large basement media room/home office, along with the added benefits of outside space and parking. Presented in excellent decorative order throughout, this home effortlessly combines style, functionality, and convenience.

The property offers versatile and well-designed living spaces across its floors. The ground floor features a reception room with concealed storage behind a mirrored wall, a spacious kitchen and breakfast room, a guest WC, and a laundry area with ample storage. The lower ground floor includes a large cinema room/home office and a gym, which also serves as a storage space. On the first floor, there are two generously sized bedrooms, each with built-in wardrobes and en suite facilities—one with a shower room, the other with a bathroom. One bedroom also enjoys access to a private terrace. The top floor houses the third bedroom with a shower room en suite, ample wardrobes, and a storage area tucked under the eaves.

Additional features of this unique property include the option for parking, as it is set back from the yellow lines, allowing vehicles to park in place of the potted plants, a rare advantage among mews houses. Furthermore, the current owner informs us that the property includes access to Queens Gate Gardens, with the opportunity to apply for a key, subject to separate negotiation.

The property is situated in Petersham Mews, in the heart of South Kensington, one of London's most prestigious neighbourhoods, the property is just moments from world-class amenities.

With excellent proximity to iconic cultural landmarks such as the Natural History Museum and the Victoria and Albert Museum, as well as the lush green spaces of Hyde Park and Kensington Gardens, the location offers a perfect blend of culture and tranquillity. South Kensington and Gloucester Road stations are only a short walk away, ensuring convenient transport links across London. The area also boasts an impressive selection of high-end boutiques, renowned restaurants, and charming cafes, making it an ideal location for luxury living.

Tenure: Freehold



## MAYFAIR SQUARE

1 Mayfair Place, London W1J 8AJ, United Kingdom

+44 (0)207 184 9888 | [info@mayfairsquare.co.uk](mailto:info@mayfairsquare.co.uk) | [www.mayfairsquare.co.uk](http://www.mayfairsquare.co.uk)

---



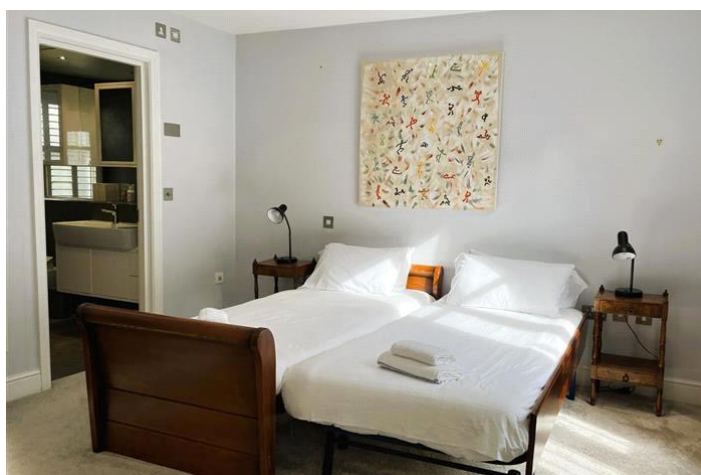
PETERSHAM MEWS, LONDON SW7  
£2,975,000



MAYFAIR SQUARE

1 Mayfair Place, London W1J 8AJ, United Kingdom

+44 (0)207 184 9888 | [info@mayfairsquare.co.uk](mailto:info@mayfairsquare.co.uk) | [www.mayfairsquare.co.uk](http://www.mayfairsquare.co.uk)

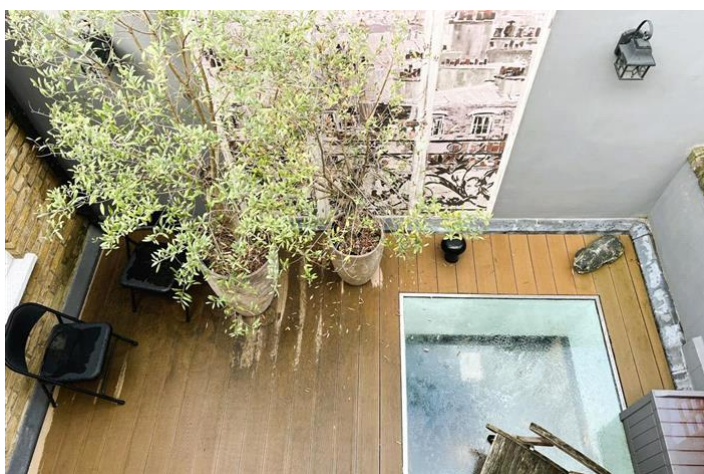
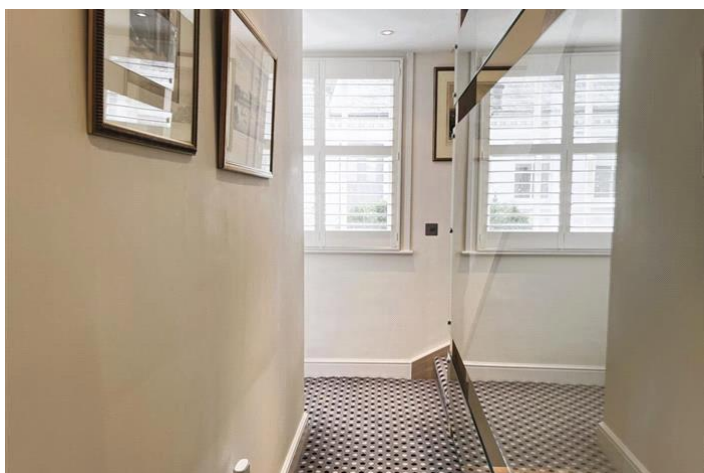
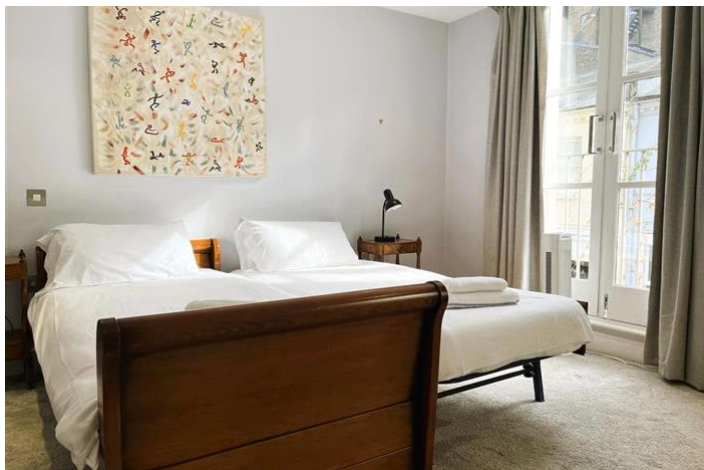


## MAYFAIR SQUARE

1 Mayfair Place, London W1J 8AJ, United Kingdom

+44 (0)207 184 9888 | [info@mayfairsquare.co.uk](mailto:info@mayfairsquare.co.uk) | [www.mayfairsquare.co.uk](http://www.mayfairsquare.co.uk)





## MAYFAIR SQUARE

1 Mayfair Place, London W1J 8AJ, United Kingdom

+44 (0)207 184 9888 | [info@mayfairsquare.co.uk](mailto:info@mayfairsquare.co.uk) | [www.mayfairsquare.co.uk](http://www.mayfairsquare.co.uk)



# MAYFAIR SQUARE

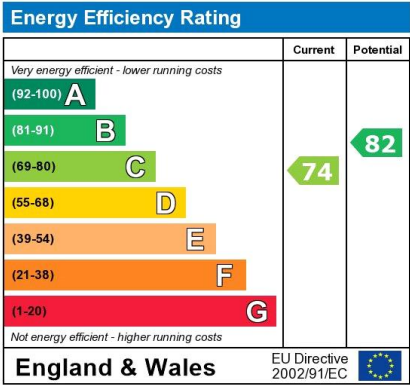
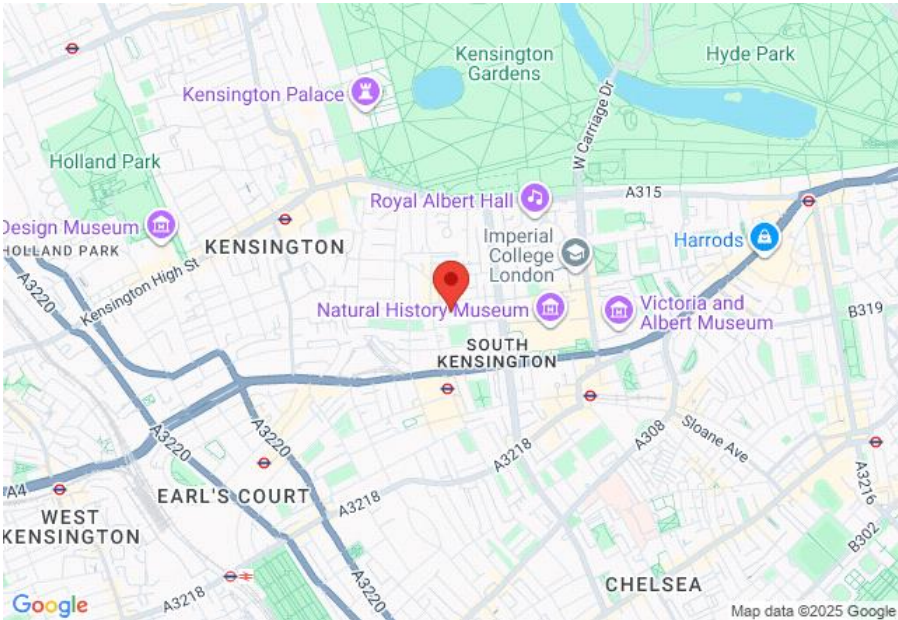
1 Mayfair Place, London W1J 8AJ, United Kingdom

+44 (0)207 184 9888 | [info@mayfairsquare.co.uk](mailto:info@mayfairsquare.co.uk) | [www.mayfairsquare.co.uk](http://www.mayfairsquare.co.uk)

---

# PETERSHAM MEWS, LONDON SW7

£2,975,000



The energy efficiency rating is a measure of the overall efficiency of a home. The higher the rating the more energy efficient the home is and the lower the fuel bills will be.



## MAYFAIR SQUARE

1 Mayfair Place, London W1J 8AJ, United Kingdom

+44 (0)207 184 9888 | info@mayfairsquare.co.uk | www.mayfairsquare.co.uk

# PETERSHAM MEWS, LONDON SW7

## £2,975,000

---

FOR MORE INFORMATION PLEASE CONTACT US

### Important Notice:

Particulars: These particulars are not an offer or contract, nor part of one. You should not rely on statements by Mayfair Square in the particulars or by word of mouth or in writing ("information") as being factually accurate about the property, its condition or its value. Neither Mayfair Square nor any joint agent has any authority to make any representations about the property, and accordingly any information given is entirely without responsibility on the part of the agents, seller(s), lessor(s) or landlord(s).

Any areas, measurements or distances are approximate. The text, photographs and plans are for guidance only and are not necessarily comprehensive. Regulations etc: Any reference to alterations to, or use of, any part of the property does not mean that any necessary planning, building regulations or other consent has been obtained. A buyer or lessee must find out by inspection or in other ways that these matters have been properly dealt with and that all information is correct.



## MAYFAIR SQUARE

1 Mayfair Place, London W1J 8AJ, United Kingdom

+44 (0)207 184 9888 | [info@mayfairsquare.co.uk](mailto:info@mayfairsquare.co.uk) | [www.mayfairsquare.co.uk](http://www.mayfairsquare.co.uk)

---