

HILL STREET, MAYFAIR, LONDON W1  
£1,680 PW

---



**MAYFAIR SQUARE**

1 Mayfair Place, London W1J 8AJ, United Kingdom

+44 (0)207 184 9888 | [info@mayfairsquare.co.uk](mailto:info@mayfairsquare.co.uk) | [www.mayfairsquare.co.uk](http://www.mayfairsquare.co.uk)

---

# HILL STREET, MAYFAIR, LONDON W1

£1,680 PW

---

## PROPERTY DESCRIPTION

Luxurious three-bedroom apartment in an elegant red brick building in Mayfair.

Spanning over 1,100 sq ft, this exquisite apartment offers a perfect blend of style and comfort. It features a bright and spacious living room, three generously sized bedrooms, two sleek modern bathrooms, and a beautifully designed kitchen, all finished to the highest standards. Residents also enjoy the added luxury of access to a private gated communal garden, providing a tranquil retreat in the heart of the city.

The building itself is designed with convenience in mind, offering spacious living accommodation, a lift service, and the attentive care of an on-site building manager, ensuring an exceptional living experience. This is a truly rare opportunity to enjoy elegance, comfort, and privacy in a highly sought-after location.

Arrange a private viewing today with our team at Mayfair Square to see this exceptional apartment.

### Living in Mayfair

Renowned for its opulence and status as one of London's most prestigious neighbourhoods, Mayfair is synonymous with luxury. Known for its stunning period architecture, world-class dining, five-star hotels, and exclusive gentleman's clubs, this iconic area also boasts a rich cultural scene with art galleries, auction houses, and fine wine merchants.

### Shopping and Dining in Mayfair

Mayfair is a haven for luxury shopping and fine dining. The area is home to some of the most exclusive global brands, including Louis Vuitton, Gucci, Chanel, Hermès, De Beers, Graff, and Rolex, alongside its very own luxury department store, Fortnum & Mason.

For food enthusiasts, Mayfair offers a culinary journey with its collection of Michelin-starred restaurants helmed by world-renowned chefs. The neighbourhood is also dotted with swanky bars and elegant cafes, making it a premier destination for indulgence and entertainment.

### Parks and Green Spaces

Despite its central location, Mayfair is surrounded by tranquil green spaces. On its borders lie Hyde Park, spanning over 350 acres, and the serene Green Park, offering residents a perfect escape from city life. Within Mayfair itself, Grosvenor Square and Mount Street Gardens provide picturesque retreats, cherished by locals for their beauty and peaceful ambiance.

### The Heart of London Elegance

Whether it's the luxury shopping, exquisite dining, or access to some of London's finest green spaces, Mayfair remains a timeless symbol of sophistication and exclusivity in the heart of London.



## MAYFAIR SQUARE

1 Mayfair Place, London W1J 8AJ, United Kingdom

+44 (0)207 184 9888 | [info@mayfairsquare.co.uk](mailto:info@mayfairsquare.co.uk) | [www.mayfairsquare.co.uk](http://www.mayfairsquare.co.uk)

---

HILL STREET, MAYFAIR, LONDON W1  
£1,680 PW

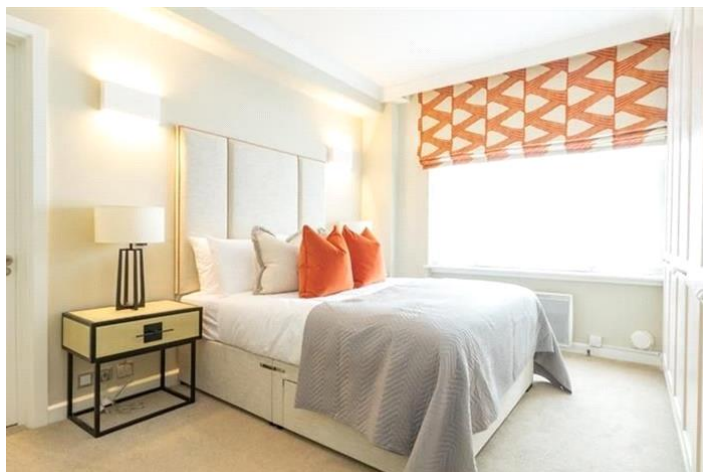


MAYFAIR SQUARE

1 Mayfair Place, London W1J 8AJ, United Kingdom

+44 (0)207 184 9888 | [info@mayfairsquare.co.uk](mailto:info@mayfairsquare.co.uk) | [www.mayfairsquare.co.uk](http://www.mayfairsquare.co.uk)





## MAYFAIR SQUARE

1 Mayfair Place, London W1J 8AJ, United Kingdom

+44 (0)207 184 9888 | [info@mayfairsquare.co.uk](mailto:info@mayfairsquare.co.uk) | [www.mayfairsquare.co.uk](http://www.mayfairsquare.co.uk)

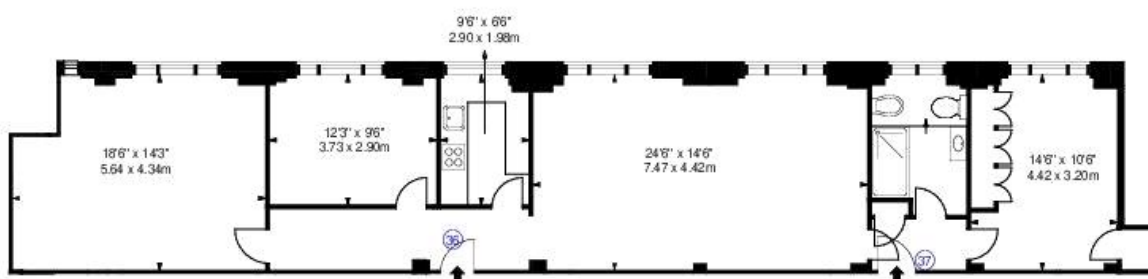


## MAYFAIR SQUARE

1 Mayfair Place, London W1J 8AJ, United Kingdom

+44 (0)207 184 9888 | [info@mayfairsquare.co.uk](mailto:info@mayfairsquare.co.uk) | [www.mayfairsquare.co.uk](http://www.mayfairsquare.co.uk)





Approx. Gross Internal Area\*  
1128 ft<sup>2</sup> - 104.79 m<sup>2</sup>

\*As Defined by the RICS - Code of Measuring Practice

Property Details:  
Flat 36/37  
39 Hill Street  
Mayfair  
W1J 5LZ

SCALE  
1:100 @ A4

Plans Drawn: 03.08.2016

See us at our Office & Bar  
**BKR**

Sunnyhill House  
37 Sunnyhill Road  
London, SW16 2UG

Tel: 0845 257 2023  
Fax: 0845 257 2024  
[www.bkr.com/properties/uk](http://www.bkr.com/properties/uk)  
[info@bkr.com](mailto:info@bkr.com)

© BKR 2016



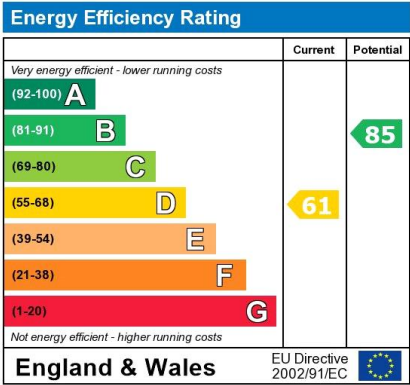
# MAYFAIR SQUARE

1 Mayfair Place, London W1J 8AJ, United Kingdom

+44 (0)207 184 9888 | [info@mayfairsquare.co.uk](mailto:info@mayfairsquare.co.uk) | [www.mayfairsquare.co.uk](http://www.mayfairsquare.co.uk)

HILL STREET, MAYFAIR, LONDON W1

£1,680 PW



The energy efficiency rating is a measure of the overall efficiency of a home. The higher the rating the more energy efficient the home is and the lower the fuel bills will be.



MAYFAIR SQUARE

1 Mayfair Place, London W1J 8AJ, United Kingdom

+44 (0)207 184 9888 | info@mayfairsquare.co.uk | www.mayfairsquare.co.uk

# HILL STREET, MAYFAIR, LONDON W1

## £1,680 PW

---

FOR MORE INFORMATION PLEASE CONTACT US

### Important Notice:

Particulars: These particulars are not an offer or contract, nor part of one. You should not rely on statements by Mayfair Square in the particulars or by word of mouth or in writing ("information") as being factually accurate about the property, its condition or its value. Neither Mayfair Square nor any joint agent has any authority to make any representations about the property, and accordingly any information given is entirely without responsibility on the part of the agents, seller(s), lessor(s) or landlord(s).

Any areas, measurements or distances are approximate. The text, photographs and plans are for guidance only and are not necessarily comprehensive. Regulations etc: Any reference to alterations to, or use of, any part of the property does not mean that any necessary planning, building regulations or other consent has been obtained. A buyer or lessee must find out by inspection or in other ways that these matters have been properly dealt with and that all information is correct.



## MAYFAIR SQUARE

1 Mayfair Place, London W1J 8AJ, United Kingdom

+44 (0)207 184 9888 | [info@mayfairsquare.co.uk](mailto:info@mayfairsquare.co.uk) | [www.mayfairsquare.co.uk](http://www.mayfairsquare.co.uk)

---