

PRINCES GATE, KNIGHTSBRIDGE, LONDON

£17,000 PW



MAYFAIR SQUARE

1 Mayfair Place, London W1J 8AJ, United Kingdom

+44 (0)207 184 9888 | info@mayfairsquare.co.uk | www.mayfairsquare.co.uk

PRINCES GATE, KNIGHTSBRIDGE, LONDON

£17,000 PW

PROPERTY DESCRIPTION

An exquisite 7-bedroom luxury house located just a 15-minute walk from Harrods.

Nestled between the prestigious Knightsbridge and Kensington areas, this handsome stucco-fronted house offers magnificent proportions. The property features seven bedrooms, four reception rooms, a lift, and a spacious roof terrace.

Arranged over seven floors and providing over 9,400 square feet of versatile living space, this splendid family residence retains a wealth of exquisite period features

Key highlights include:

- A grand entrance hall
- A spacious principal reception room
- A wonderful master bedroom suite
- Luxurious marble bathrooms
- A contemporary bespoke kitchen/dining room
- A generous roof terrace
- Fully integrated Lutron lighting system and audio-visual system
- Air-conditioning
- Lift
- Ample storage is available in multiple private storage vaults on the lower ground floor.

Arrange a private viewing today with our team at Mayfair Square to view this exceptionally luxurious house.

Living in Knightsbridge Area.

Knightsbridge is one of London's most exclusive and affluent districts, offering a luxurious lifestyle with world-class shopping, fine dining, and cultural landmarks. Home to the famous Harrods and Harvey Nichols, it features flagship stores of top luxury brands. The dining scene includes Michelin-starred restaurants and trendy cafes. Cultural institutions like the Victoria and Albert Museum, the Natural History Museum, and the Royal Albert Hall are nearby, while Hyde Park provides a green oasis. The real estate market is among the most expensive in the world, with elegant townhouses and luxury apartments. Excellent transport links include the Knightsbridge and South Kensington tube stations, making it easy to access the rest of London. Knightsbridge epitomizes a blend of historic charm and modern luxury.



MAYFAIR SQUARE

1 Mayfair Place, London W1J 8AJ, United Kingdom

+44 (0)207 184 9888 | info@mayfairsquare.co.uk | www.mayfairsquare.co.uk

PRINCES GATE, KNIGHTSBRIDGE, LONDON
£17,000 PW



MAYFAIR SQUARE

1 Mayfair Place, London W1J 8AJ, United Kingdom

+44 (0)207 184 9888 | info@mayfairsquare.co.uk | www.mayfairsquare.co.uk



MAYFAIR SQUARE

1 Mayfair Place, London W1J 8AJ, United Kingdom

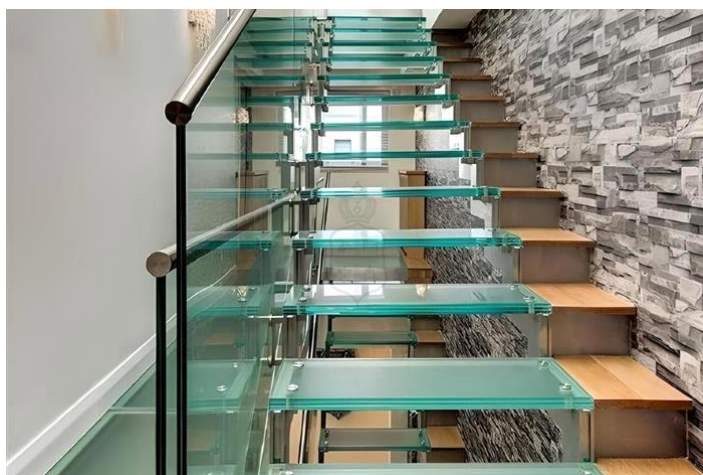
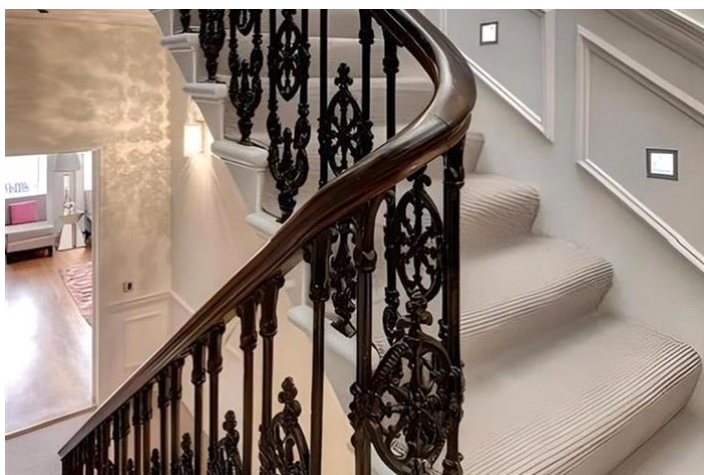
+44 (0)207 184 9888 | info@mayfairsquare.co.uk | www.mayfairsquare.co.uk



MAYFAIR SQUARE

1 Mayfair Place, London W1J 8AJ, United Kingdom

+44 (0)207 184 9888 | info@mayfairsquare.co.uk | www.mayfairsquare.co.uk



MAYFAIR SQUARE

1 Mayfair Place, London W1J 8AJ, United Kingdom

+44 (0)207 184 9888 | info@mayfairsquare.co.uk | www.mayfairsquare.co.uk



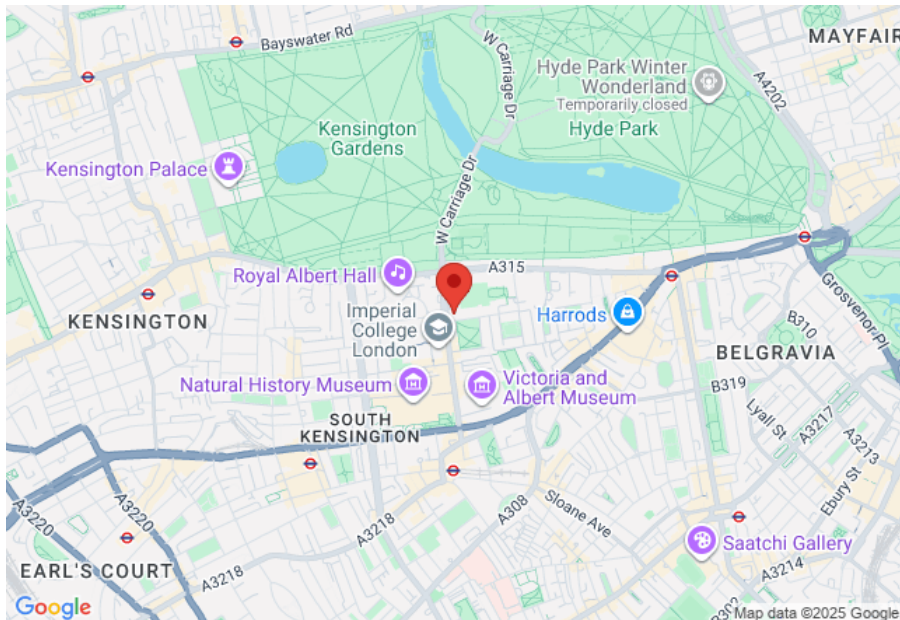
MAYFAIR SQUARE

1 Mayfair Place, London W1J 8AJ, United Kingdom

+44 (0)207 184 9888 | info@mayfairsquare.co.uk | www.mayfairsquare.co.uk

PRINCES GATE, KNIGHTSBRIDGE, LONDON

£17,000 PW



| Energy Efficiency Rating | | |
|---|-------------------------|-----------|
| | Current | Potential |
| Very energy efficient - lower running costs | | |
| (92-100) A | | |
| (81-91) B | | 82 |
| (69-80) C | | |
| (55-68) D | 70 | |
| (39-54) E | | |
| (21-38) F | | |
| (1-20) G | | |
| Not energy efficient - higher running costs | | |
| England & Wales | EU Directive 2002/91/EC | |

The energy efficiency rating is a measure of the overall efficiency of a home. The higher the rating the more energy efficient the home is and the lower the fuel bills will be.



MAYFAIR SQUARE

1 Mayfair Place, London W1J 8AJ, United Kingdom

+44 (0)207 184 9888 | info@mayfairsquare.co.uk | www.mayfairsquare.co.uk

PRINCES GATE, KNIGHTSBRIDGE, LONDON

£17,000 PW

FOR MORE INFORMATION PLEASE CONTACT US

Important Notice:

Particulars: These particulars are not an offer or contract, nor part of one. You should not rely on statements by Mayfair Square in the particulars or by word of mouth or in writing ("information") as being factually accurate about the property, its condition or its value. Neither Mayfair Square nor any joint agent has any authority to make any representations about the property, and accordingly any information given is entirely without responsibility on the part of the agents, seller(s), lessor(s) or landlord(s).

Any areas, measurements or distances are approximate. The text, photographs and plans are for guidance only and are not necessarily comprehensive. Regulations etc: Any reference to alterations to, or use of, any part of the property does not mean that any necessary planning, building regulations or other consent has been obtained. A buyer or lessee must find out by inspection or in other ways that these matters have been properly dealt with and that all information is correct.



MAYFAIR SQUARE

1 Mayfair Place, London W1J 8AJ, United Kingdom

+44 (0)207 184 9888 | info@mayfairsquare.co.uk | www.mayfairsquare.co.uk
