

SHEPHERDS CLOSE, MAYFAIR, LONDON W1

£4,500 PW



MAYFAIR SQUARE

1 Mayfair Place, London W1J 8AJ, United Kingdom

+44 (0)207 184 9888 | [info@mayfairsquare.co.uk](mailto:info@mayfairsquare.co.uk) | [www.mayfairsquare.co.uk](http://www.mayfairsquare.co.uk)

---

# SHEPHERDS CLOSE, MAYFAIR, LONDON W1

## £4,500 PW

---

### PROPERTY DESCRIPTION

A luxurious five-bedroom terrace house in the heart of Mayfair.

This exceptional house features 5 bedrooms and four bathrooms, spanning over 4 floors with an abundance of natural light throughout.

The ground floor includes a spacious living room leading to a private garden, along with a separate dining room. The first and second floors offer 4 bedrooms, with the master bedroom boasting a spacious en-suite and dressing room. The lower ground floor is a culinary masterpiece, featuring a state-of-the-art kitchen with Miele appliances, a beautifully designed island, and a charming breakfast table. Also on this floor, you'll find the fifth bedroom, perfect for staff or guests, along with access to a patio, ample storage, and a separate staff entrance. This exceptional home combines timeless elegance with modern luxury, just steps from Grosvenor Square.

Arrange a private viewing today with our team at Mayfair Square to see this exceptional house.

#### Living in Mayfair

Synonymous with luxury and renowned as one of the wealthiest places to live in London, Mayfair is celebrated for its exquisite period architecture, cosmopolitan restaurants, 5-star hotels, and distinguished gentleman's clubs. The area is also home to an array of art galleries and esteemed wine merchants. Mayfair offers some of the city's most exclusive dining experiences, swanky bars, and high-end designer shops, featuring prestigious brands like Louis Vuitton, Gucci, Bulgari, Chanel, Hermes, De Beers, Graff, and Rolex. It even boasts its own luxury department store, Fortnum & Mason. Mayfair is a culinary hotspot with several Michelin-starred restaurants helmed by world-famous chefs. The area is beautifully framed by Hyde Park's 350 acres of green space and the serene Green Park. At its heart lie Grosvenor Square and Mount Street Gardens, cherished retreats for local residents.

Garden details: Private Garden



## MAYFAIR SQUARE

1 Mayfair Place, London W1J 8AJ, United Kingdom

+44 (0)207 184 9888 | [info@mayfairsquare.co.uk](mailto:info@mayfairsquare.co.uk) | [www.mayfairsquare.co.uk](http://www.mayfairsquare.co.uk)

---

# SHEPHERDS CLOSE, MAYFAIR, LONDON W1

## £4,500 PW



## MAYFAIR SQUARE

1 Mayfair Place, London W1J 8AJ, United Kingdom

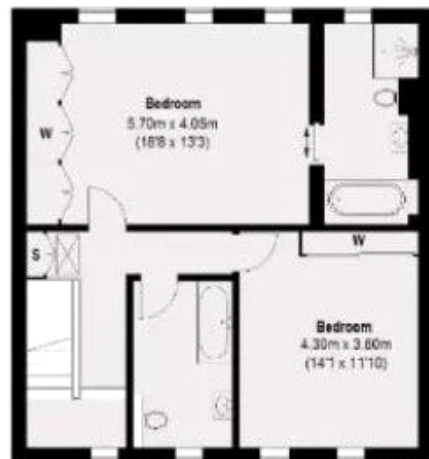
+44 (0)207 184 9888 | [info@mayfairsquare.co.uk](mailto:info@mayfairsquare.co.uk) | [www.mayfairsquare.co.uk](http://www.mayfairsquare.co.uk)



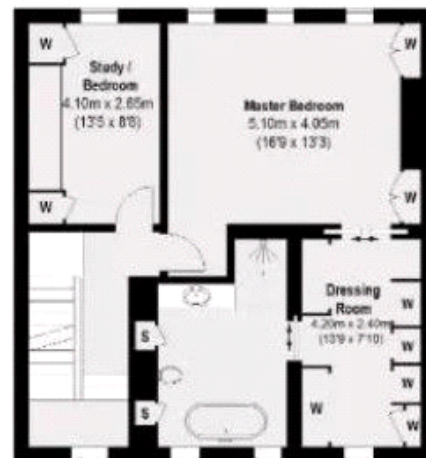
MAYFAIR SQUARE

1 Mayfair Place, London W1J 8AJ, United Kingdom

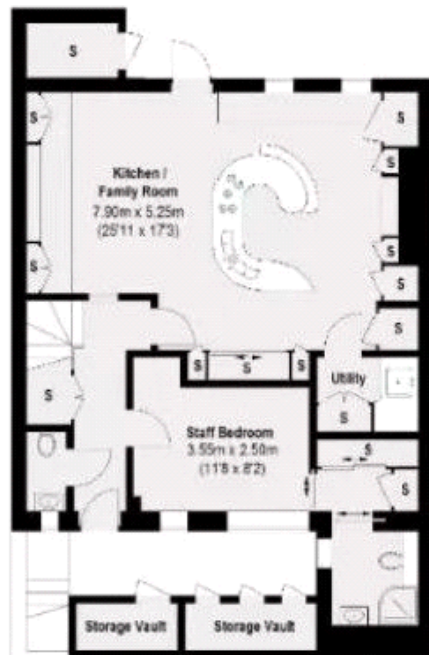
+44 (0)207 184 9888 | [info@mayfairsquare.co.uk](mailto:info@mayfairsquare.co.uk) | [www.mayfairsquare.co.uk](http://www.mayfairsquare.co.uk)



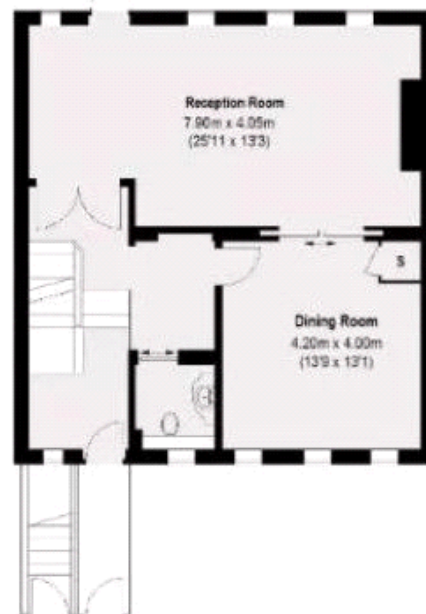
Second Floor



First Floor



Lower Ground Floor



Ground Floor

Total area (approx.): 274.16 sq. m (2951 sq. ft)  
Vault: 4.61 sq. m ( 50 sq. ft)



## MAYFAIR SQUARE

1 Mayfair Place, London W1J 8AJ, United Kingdom

+44 (0)207 184 9888 | [info@mayfairsquare.co.uk](mailto:info@mayfairsquare.co.uk) | [www.mayfairsquare.co.uk](http://www.mayfairsquare.co.uk)

# SHEPHERDS CLOSE, MAYFAIR, LONDON W1

## £4,500 PW



Energy Efficiency Rating		
	Current	Potential
Very energy efficient - lower running costs		
(92-100) A		
(81-91) B		
(69-80) C		
(55-68) D	63	82
(39-54) E		
(21-38) F		
(1-20) G		
Not energy efficient - higher running costs		
England & Wales	EU Directive 2002/91/EC	

The energy efficiency rating is a measure of the overall efficiency of a home. The higher the rating the more energy efficient the home is and the lower the fuel bills will be.



## MAYFAIR SQUARE

1 Mayfair Place, London W1J 8AJ, United Kingdom

+44 (0)207 184 9888 | [info@mayfairsquare.co.uk](mailto:info@mayfairsquare.co.uk) | [www.mayfairsquare.co.uk](http://www.mayfairsquare.co.uk)

# SHEPHERDS CLOSE, MAYFAIR, LONDON W1

## £4,500 PW

---

FOR MORE INFORMATION PLEASE CONTACT US

### Important Notice:

Particulars: These particulars are not an offer or contract, nor part of one. You should not rely on statements by Mayfair Square in the particulars or by word of mouth or in writing ("information") as being factually accurate about the property, its condition or its value. Neither Mayfair Square nor any joint agent has any authority to make any representations about the property, and accordingly any information given is entirely without responsibility on the part of the agents, seller(s), lessor(s) or landlord(s).

Any areas, measurements or distances are approximate. The text, photographs and plans are for guidance only and are not necessarily comprehensive. Regulations etc: Any reference to alterations to, or use of, any part of the property does not mean that any necessary planning, building regulations or other consent has been obtained. A buyer or lessee must find out by inspection or in other ways that these matters have been properly dealt with and that all information is correct.



## MAYFAIR SQUARE

1 Mayfair Place, London W1J 8AJ, United Kingdom

+44 (0)207 184 9888 | [info@mayfairsquare.co.uk](mailto:info@mayfairsquare.co.uk) | [www.mayfairsquare.co.uk](http://www.mayfairsquare.co.uk)

---