

ST. JOHNS WOOD PARK, LONDON NW8

£2,495 PW



MAYFAIR SQUARE

1 Mayfair Place, London W1J 8AJ, United Kingdom

+44 (0)207 184 9888 | [info@mayfairsquare.co.uk](mailto:info@mayfairsquare.co.uk) | [www.mayfairsquare.co.uk](http://www.mayfairsquare.co.uk)

# ST. JOHNS WOOD PARK, LONDON NW8

## £2,495 PW

---

### PROPERTY DESCRIPTION

An excellent five-bedroom luxury duplex apartment in St John's Wood.

This exceptional apartment spans over 2100 sq ft and is spread across two floors, offering breathtaking views over London. Fully air-conditioned and impeccably decorated to the highest standard, it comprises five bedrooms, four bathrooms, and a guest room. The generously sized reception area is complemented by a separate dining room, while a fully fitted eat-in kitchen and a separate utility room add to its allure.

This apartment is set within a gated residential development with landscaped gardens and offers 24-hour concierge service, off-street parking, and on-site property management. It enjoys a prime location near the vibrant amenities of Swiss Cottage and St. John's Wood. The convenience of Swiss Cottage Underground Station (Jubilee Line) is just a short walk away, providing easy access to transport networks.

#### Living in St Johns Wood

A true village atmosphere in the heart of London, St John's Wood appeals to both families and young professionals alike.

The area is world renowned for the iconic Lords Cricket ground and the famous Abbey Road Studios which was the recording venue for the Beatles and Pink Floyd.

#### Shopping and Eatery in St John's Wood

St John's Wood High Street has a variety of fashion boutiques, delis, and restaurants to organic food shops:

#### Parks & Green Spaces

Regent's Park with 395 acres of beautiful tranquil space and has a rose garden with over 12,000 roses.

Regents Park is also home to the Open Air Theatre and the London Zoo.

Council Tax Band: TBC



## MAYFAIR SQUARE

1 Mayfair Place, London W1J 8AJ, United Kingdom

+44 (0)207 184 9888 | [info@mayfairsquare.co.uk](mailto:info@mayfairsquare.co.uk) | [www.mayfairsquare.co.uk](http://www.mayfairsquare.co.uk)

---

ST. JOHNS WOOD PARK, LONDON NW8  
£2,495 PW



MAYFAIR SQUARE

1 Mayfair Place, London W1J 8AJ, United Kingdom

+44 (0)207 184 9888 | [info@mayfairsquare.co.uk](mailto:info@mayfairsquare.co.uk) | [www.mayfairsquare.co.uk](http://www.mayfairsquare.co.uk)





## MAYFAIR SQUARE

1 Mayfair Place, London W1J 8AJ, United Kingdom

+44 (0)207 184 9888 | [info@mayfairsquare.co.uk](mailto:info@mayfairsquare.co.uk) | [www.mayfairsquare.co.uk](http://www.mayfairsquare.co.uk)



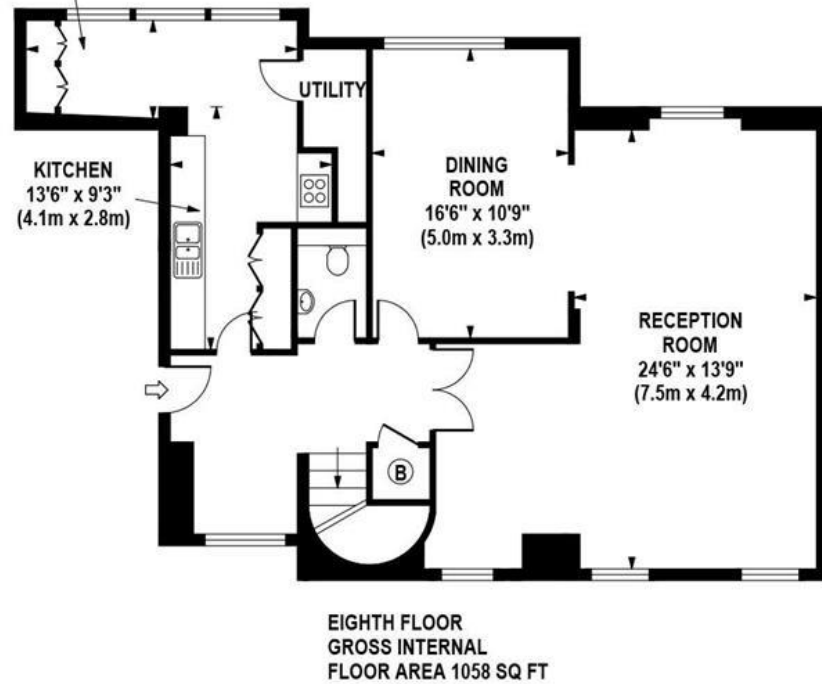
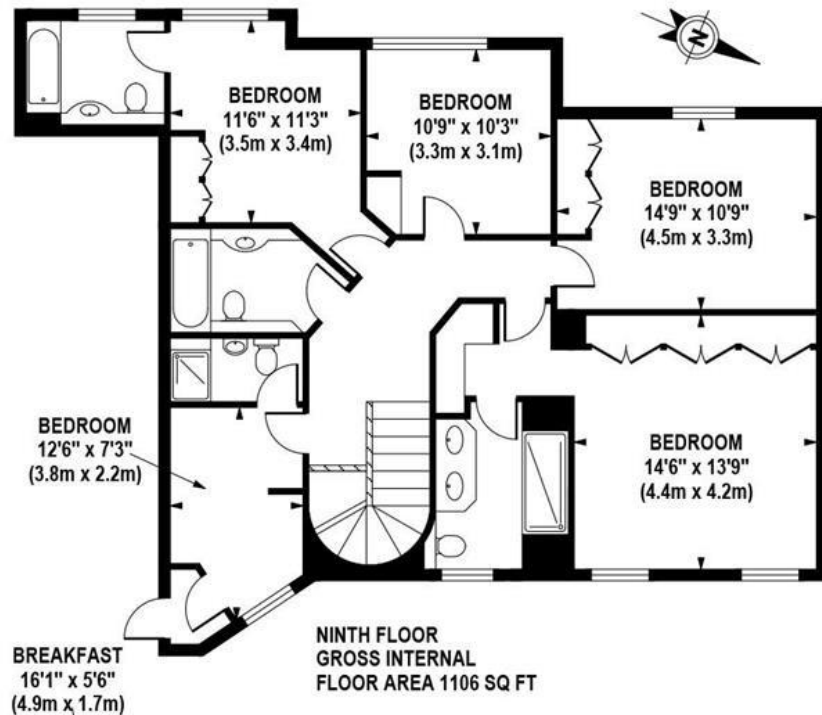
## MAYFAIR SQUARE

1 Mayfair Place, London W1J 8AJ, United Kingdom

+44 (0)207 184 9888 | [info@mayfairsquare.co.uk](mailto:info@mayfairsquare.co.uk) | [www.mayfairsquare.co.uk](http://www.mayfairsquare.co.uk)

## BOYDELL COURT

Approximate Gross Internal Area 2164 sq ft / 201.0 sq m



Although every attempt has been made to ensure accuracy, all measurements are approximate.  
The floor plan's for illustrative purposes only and not to scale. Measured in accordance to RICS standards.  
DE-PHOTOGRAPHY.NET



## MAYFAIR SQUARE

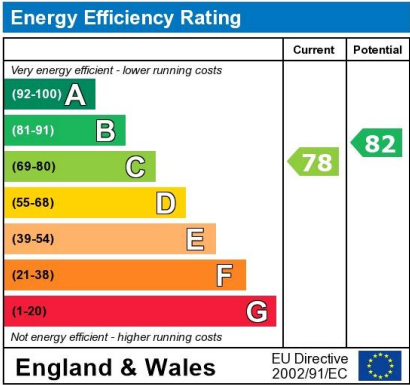
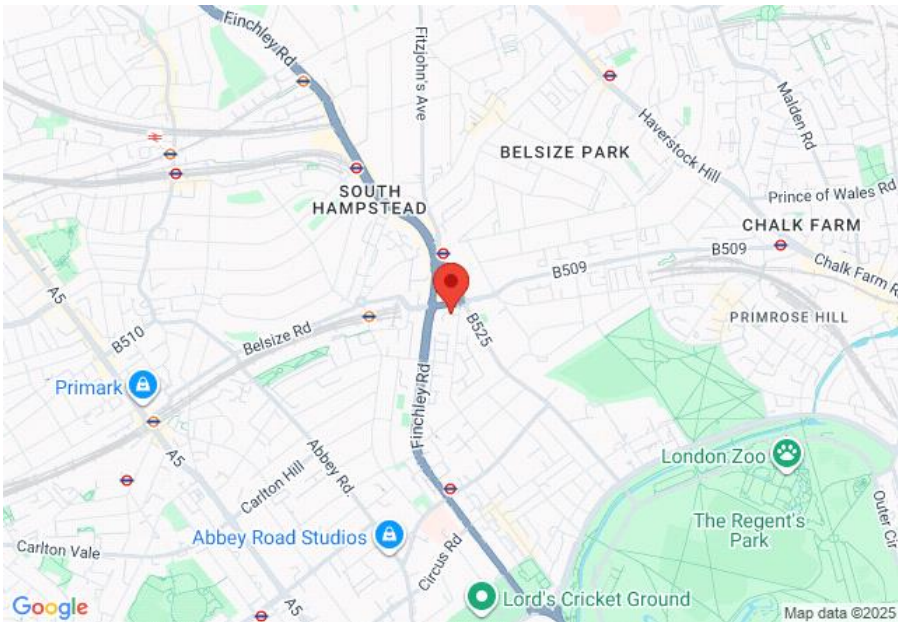
1 Mayfair Place, London W1J 8AJ, United Kingdom

+44 (0)207 184 9888 | [info@mayfairsquare.co.uk](mailto:info@mayfairsquare.co.uk) | [www.mayfairsquare.co.uk](http://www.mayfairsquare.co.uk)



# ST. JOHNS WOOD PARK, LONDON NW8

£2,495 PW



The energy efficiency rating is a measure of the overall efficiency of a home. The higher the rating the more energy efficient the home is and the lower the fuel bills will be.



## MAYFAIR SQUARE

1 Mayfair Place, London W1J 8AJ, United Kingdom

+44 (0)207 184 9888 | info@mayfairsquare.co.uk | www.mayfairsquare.co.uk

# ST. JOHNS WOOD PARK, LONDON NW8

## £2,495 PW

---

FOR MORE INFORMATION PLEASE CONTACT US

### Important Notice:

Particulars: These particulars are not an offer or contract, nor part of one. You should not rely on statements by Mayfair Square in the particulars or by word of mouth or in writing ("information") as being factually accurate about the property, its condition or its value. Neither Mayfair Square nor any joint agent has any authority to make any representations about the property, and accordingly any information given is entirely without responsibility on the part of the agents, seller(s), lessor(s) or landlord(s).

Any areas, measurements or distances are approximate. The text, photographs and plans are for guidance only and are not necessarily comprehensive. Regulations etc: Any reference to alterations to, or use of, any part of the property does not mean that any necessary planning, building regulations or other consent has been obtained. A buyer or lessee must find out by inspection or in other ways that these matters have been properly dealt with and that all information is correct.



## MAYFAIR SQUARE

1 Mayfair Place, London W1J 8AJ, United Kingdom

+44 (0)207 184 9888 | [info@mayfairsquare.co.uk](mailto:info@mayfairsquare.co.uk) | [www.mayfairsquare.co.uk](http://www.mayfairsquare.co.uk)

---