

ST. EDMUNDS TERRACE, ST JOHNS WOOD

£692 PW



MAYFAIR SQUARE

1 Mayfair Place, London W1J 8AJ, United Kingdom

+44 (0)207 184 9888 | info@mayfairsquare.co.uk | www.mayfairsquare.co.uk

ST. EDMUNDS TERRACE, ST JOHNS WOOD

£692 PW

PROPERTY DESCRIPTION

An excellent two-bedroom apartment located just moments away from Primrose Hill and Regents Park.

The apartment offers two bedrooms, one bathroom, and a spacious living room seamlessly integrated with a dining area. Additionally, there is a fully integrated kitchen with ample storage space. Residents also enjoy the convenience of heating and hot water included in the rental price, as well as access to a beautiful communal garden.

This residential building offers porterage, a passenger lift, and is conveniently situated just moments away from the vast expanse of Regent's Park and Primrose Hill, as well as St. John's Wood High Street and underground station. Additionally, residents enjoy the security provided by the entry phone system and have access to communal gardens.

Living in St John's Wood

A true village atmosphere in the heart of London, St John's Wood appeals to both families and young professionals alike.

The area is world-renowned for the iconic Lord's Cricket Ground and the famous Abbey Road Studios, which was the recording venue for the Beatles and Pink Floyd.

St John's Wood High Street has an excellent variety of fashion boutiques, delis, and restaurants, as well as organic food shops.

Nature lovers and those seeking leisurely pursuits will be thrilled to discover that Regents Park and London Zoo are just a brief walk away. You can enjoy your free time in the midst of nature's beauty or embark on exciting adventures at the renowned London Zoo, all within a short stroll from your doorstep.

Regent's Park, a renowned 395-acre haven of tranquillity, boasts an open-air theatre and an enchanting rose garden with over 12,000 roses.

This apartment enjoys great transportation options, with multiple bus routes and the nearby St. John's Wood Underground station, which is served by the Jubilee line.



MAYFAIR SQUARE

1 Mayfair Place, London W1J 8AJ, United Kingdom

+44 (0)207 184 9888 | info@mayfairsquare.co.uk | www.mayfairsquare.co.uk

ST. EDMUNDS TERRACE, ST JOHNS WOOD

£692 PW



MAYFAIR SQUARE

1 Mayfair Place, London W1J 8AJ, United Kingdom

+44 (0)207 184 9888 | info@mayfairsquare.co.uk | www.mayfairsquare.co.uk



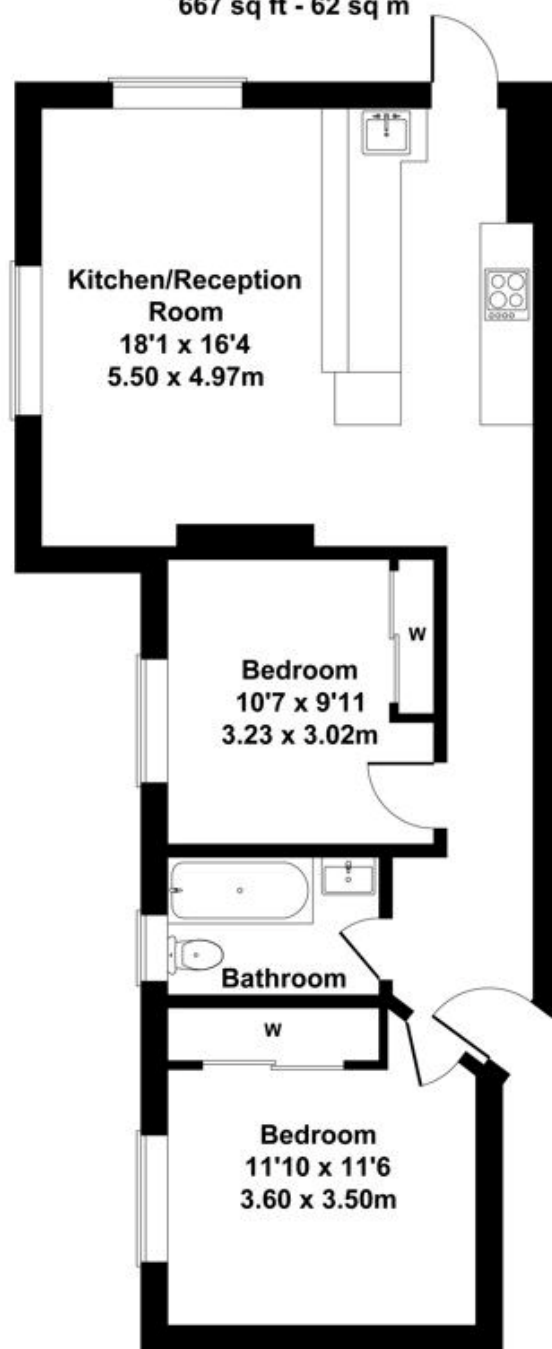
MAYFAIR SQUARE

1 Mayfair Place, London W1J 8AJ, United Kingdom

+44 (0)207 184 9888 | info@mayfairsquare.co.uk | www.mayfairsquare.co.uk

St Edmunds Terrace, St Johns Wood

Approximate Gross Internal Area
667 sq ft - 62 sq m



GROUND FLOOR

For Illustrative Purposes Only.



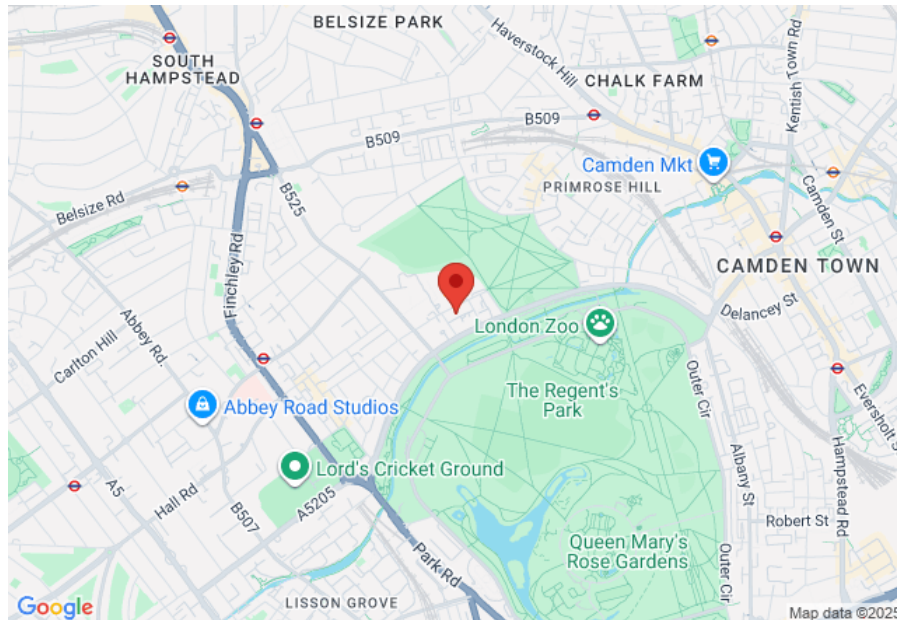
MAYFAIR SQUARE

1 Mayfair Place, London W1J 8AJ, United Kingdom

+44 (0)207 184 9888 | info@mayfairsquare.co.uk | www.mayfairsquare.co.uk

ST. EDMUNDS TERRACE, ST JOHNS WOOD

£692 PW



| Energy Efficiency Rating | | |
|---|-------------------------|-----------|
| | Current | Potential |
| Very energy efficient - lower running costs | | |
| (92-100) A | | |
| (81-91) B | | |
| (69-80) C | | |
| (55-68) D | 66 | 77 |
| (39-54) E | | |
| (21-38) F | | |
| (1-20) G | | |
| Not energy efficient - higher running costs | | |
| England & Wales | EU Directive 2002/91/EC | |

The energy efficiency rating is a measure of the overall efficiency of a home. The higher the rating the more energy efficient the home is and the lower the fuel bills will be.



MAYFAIR SQUARE

1 Mayfair Place, London W1J 8AJ, United Kingdom

+44 (0)207 184 9888 | info@mayfairsquare.co.uk | www.mayfairsquare.co.uk

ST. EDMUNDS TERRACE, ST JOHNS WOOD

£692 PW

FOR MORE INFORMATION PLEASE CONTACT US

Important Notice:

Particulars: These particulars are not an offer or contract, nor part of one. You should not rely on statements by Mayfair Square in the particulars or by word of mouth or in writing ("information") as being factually accurate about the property, its condition or its value. Neither Mayfair Square nor any joint agent has any authority to make any representations about the property, and accordingly any information given is entirely without responsibility on the part of the agents, seller(s), lessor(s) or landlord(s).

Any areas, measurements or distances are approximate. The text, photographs and plans are for guidance only and are not necessarily comprehensive. Regulations etc: Any reference to alterations to, or use of, any part of the property does not mean that any necessary planning, building regulations or other consent has been obtained. A buyer or lessee must find out by inspection or in other ways that these matters have been properly dealt with and that all information is correct.



MAYFAIR SQUARE

1 Mayfair Place, London W1J 8AJ, United Kingdom

+44 (0)207 184 9888 | info@mayfairsquare.co.uk | www.mayfairsquare.co.uk
