

RATHBONE PLACE, LONDON W1

£1,096 PW



MAYFAIR SQUARE

1 Mayfair Place, London W1J 8AJ, United Kingdom

+44 (0)207 184 9888 | info@mayfairsquare.co.uk | www.mayfairsquare.co.uk

RATHBONE PLACE, LONDON W1

£1,096 PW

PROPERTY DESCRIPTION

An exceptional one-bedroom apartment set within the prestigious Rathbone Place development, in the heart of Fitzrovia, one of London's most desirable and vibrant neighbourhoods.

Elegantly designed and immaculately presented, this beautifully proportioned apartment spans over 570 sq ft of refined living space. The property comprises a spacious double bedroom, a sophisticated open-plan reception room, and a fully integrated contemporary kitchen, complemented by floor-to-ceiling windows that flood the space with natural light. A private balcony further enhances the sense of space and offers the perfect setting for relaxation.

Residents of this exclusive development enjoy access to world-class lifestyle amenities, including:

- * 24-hour concierge service
- * State-of-the-art residents' gym
- * Luxury swimming pool
- * Sauna & steam room

Perfectly positioned, Rathbone Place is moments from Oxford Street, Charlotte Street, and the culinary and cultural delights of Soho and Marylebone. The property also benefits from excellent transport connectivity, with Tottenham Court Road station (Central, Northern, and Elizabeth Line) a short stroll away, offering swift access across London and beyond.



MAYFAIR SQUARE

1 Mayfair Place, London W1J 8AJ, United Kingdom

+44 (0)207 184 9888 | info@mayfairsquare.co.uk | www.mayfairsquare.co.uk

RATHBONE PLACE, LONDON W1
£1,096 PW



MAYFAIR SQUARE

1 Mayfair Place, London W1J 8AJ, United Kingdom

+44 (0)207 184 9888 | info@mayfairsquare.co.uk | www.mayfairsquare.co.uk



MAYFAIR SQUARE

1 Mayfair Place, London W1J 8AJ, United Kingdom

+44 (0)207 184 9888 | info@mayfairsquare.co.uk | www.mayfairsquare.co.uk



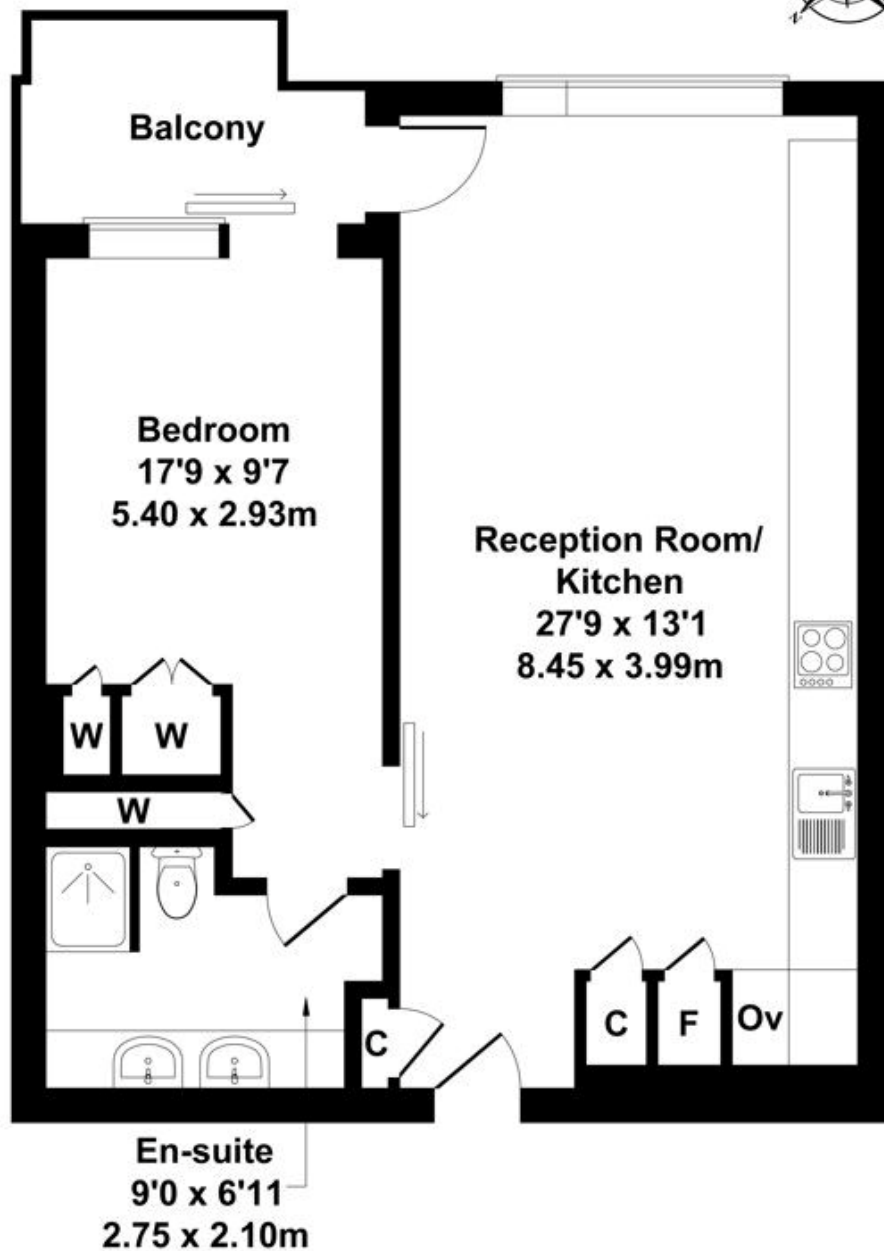
MAYFAIR SQUARE

1 Mayfair Place, London W1J 8AJ, United Kingdom

+44 (0)207 184 9888 | info@mayfairsquare.co.uk | www.mayfairsquare.co.uk

Rathbone Place

Approximate Gross Internal Area
592 sq ft - 55 sq m



THIRD FLOOR

For Illustrative Purposes Only.



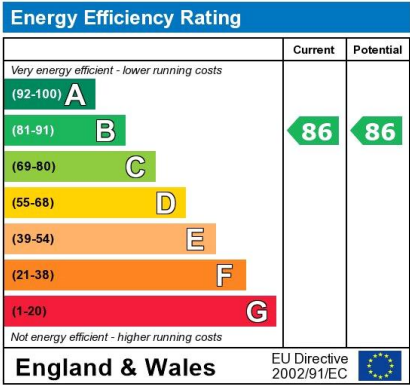
MAYFAIR SQUARE

1 Mayfair Place, London W1J 8AJ, United Kingdom

+44 (0)207 184 9888 | info@mayfairsquare.co.uk | www.mayfairsquare.co.uk

RATHBONE PLACE, LONDON W1

£1,096 PW



The energy efficiency rating is a measure of the overall efficiency of a home. The higher the rating the more energy efficient the home is and the lower the fuel bills will be.



MAYFAIR SQUARE

1 Mayfair Place, London W1J 8AJ, United Kingdom

+44 (0)207 184 9888 | info@mayfairsquare.co.uk | www.mayfairsquare.co.uk

RATHBONE PLACE, LONDON W1

£1,096 PW

FOR MORE INFORMATION PLEASE CONTACT US

Important Notice:

Particulars: These particulars are not an offer or contract, nor part of one. You should not rely on statements by Mayfair Square in the particulars or by word of mouth or in writing ("information") as being factually accurate about the property, its condition or its value. Neither Mayfair Square nor any joint agent has any authority to make any representations about the property, and accordingly any information given is entirely without responsibility on the part of the agents, seller(s), lessor(s) or landlord(s).

Any areas, measurements or distances are approximate. The text, photographs and plans are for guidance only and are not necessarily comprehensive. Regulations etc: Any reference to alterations to, or use of, any part of the property does not mean that any necessary planning, building regulations or other consent has been obtained. A buyer or lessee must find out by inspection or in other ways that these matters have been properly dealt with and that all information is correct.



MAYFAIR SQUARE

1 Mayfair Place, London W1J 8AJ, United Kingdom

+44 (0)207 184 9888 | info@mayfairsquare.co.uk | www.mayfairsquare.co.uk
