

COURT CLOSE, ST. JOHNS WOOD PARK, LONDON NW8

£2,538 PW



MAYFAIR SQUARE

1 Mayfair Place, London W1J 8AJ, United Kingdom

+44 (0)207 184 9888 | info@mayfairsquare.co.uk | www.mayfairsquare.co.uk

COURT CLOSE, ST. JOHNS WOOD PARK, LONDON NW8

£2,538 PW

PROPERTY DESCRIPTION

An excellent five-bedroom townhouse in St Johns Wood.

Situated in a gated development with 24-hour porter service, this property offers five bedrooms and four bathrooms. The spacious open-plan living room seamlessly integrates a modern, fully equipped kitchen with a dining area and spans over 1,700 sq ft. Maintained to high standards, the property features full air conditioning, an alarm system, a video entry phone, and double glazing. Additionally, it boasts a beautiful garden and terrace.

St Johns Wood Area

A true village atmosphere in the heart of London, St John's Wood appeals to both families and young professionals alike.

The area is world renowned for the iconic Lords Cricket ground and the famous Abbey Road Studios which was the recording venue for the Beatles and Pink Floyd.

Shopping and Eatery in St John's Wood

St John's Wood High Street has a variety of fashion boutiques, delis, and restaurants to organic food shops:

Parks & Green Spaces

Regent's Park with 395 acres of beautiful tranquil space and has a rose garden with over 12,000 roses.

Regents Park is also home the Open Air Theatre and the London Zoo and an Open Air Theatre.



MAYFAIR SQUARE

1 Mayfair Place, London W1J 8AJ, United Kingdom

+44 (0)207 184 9888 | info@mayfairsquare.co.uk | www.mayfairsquare.co.uk

COURT CLOSE, ST. JOHNS WOOD PARK, LONDON NW8

£2,538 PW



MAYFAIR SQUARE

1 Mayfair Place, London W1J 8AJ, United Kingdom

+44 (0)207 184 9888 | info@mayfairsquare.co.uk | www.mayfairsquare.co.uk



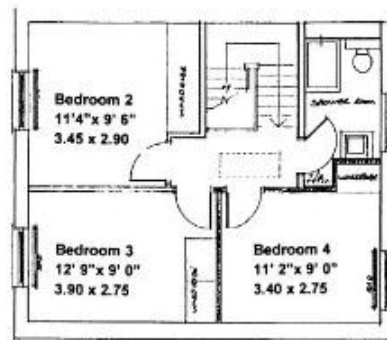
MAYFAIR SQUARE

1 Mayfair Place, London W1J 8AJ, United Kingdom

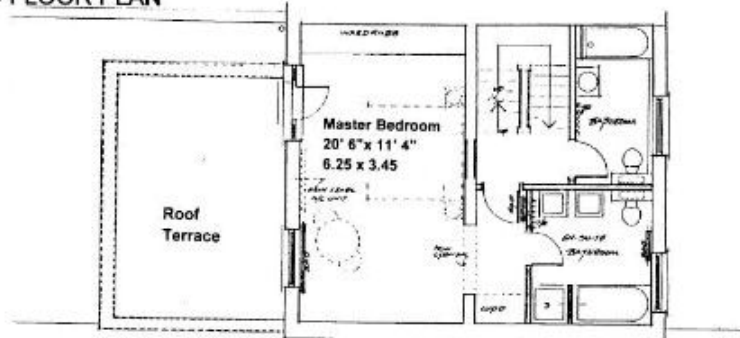
+44 (0)207 184 9888 | info@mayfairsquare.co.uk | www.mayfairsquare.co.uk

COURT CLOSE, BOYDELL COURT, ST. JOHN'S WOOD PARK, LONDON NW8

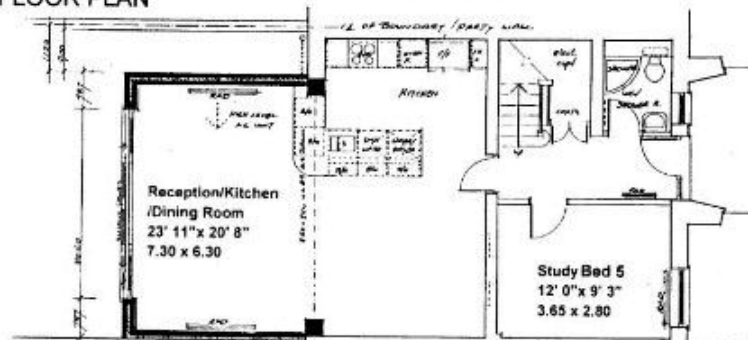
Gross Floor Area
1,704 sq.ft.
158.3 sq.m.



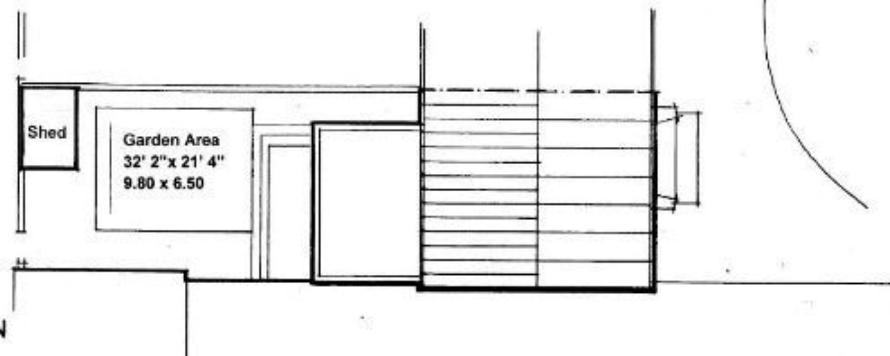
SECOND FLOOR PLAN



FIRST FLOOR PLAN



GROUND FLOOR PLAN



SITE PLAN

For illustrative purposes only.

Not to Scale



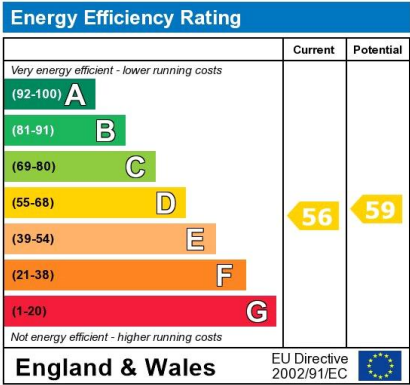
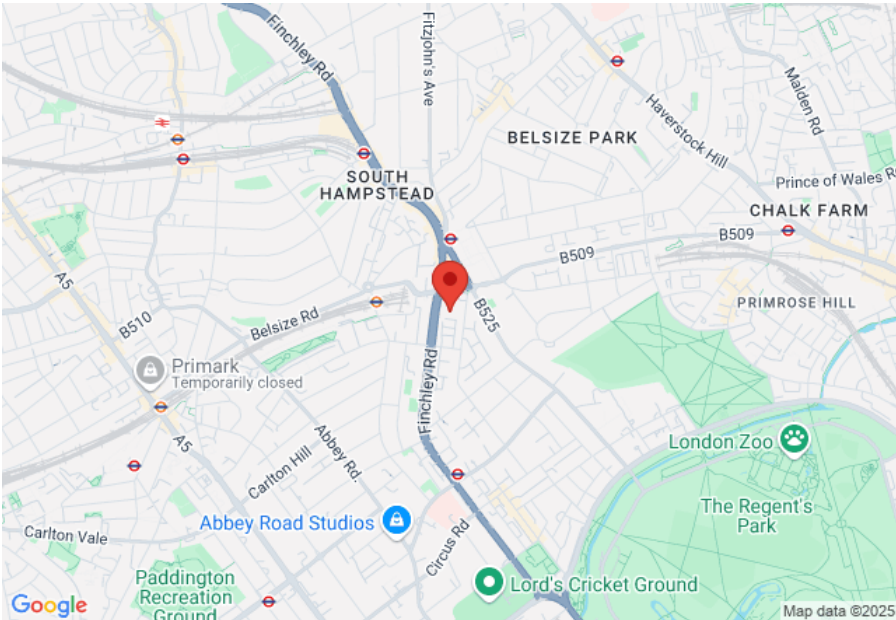
MAYFAIR SQUARE

1 Mayfair Place, London W1J 8AJ, United Kingdom

+44 (0)207 184 9888 | info@mayfairsquare.co.uk | www.mayfairsquare.co.uk

COURT CLOSE, ST. JOHNS WOOD PARK, LONDON NW8

£2,538 PW



The energy efficiency rating is a measure of the overall efficiency of a home. The higher the rating the more energy efficient the home is and the lower the fuel bills will be.



MAYFAIR SQUARE

1 Mayfair Place, London W1J 8AJ, United Kingdom

+44 (0)207 184 9888 | info@mayfairsquare.co.uk | www.mayfairsquare.co.uk

COURT CLOSE, ST. JOHNS WOOD PARK, LONDON NW8

£2,538 PW

FOR MORE INFORMATION PLEASE CONTACT US

Important Notice:

Particulars: These particulars are not an offer or contract, nor part of one. You should not rely on statements by Mayfair Square in the particulars or by word of mouth or in writing ("information") as being factually accurate about the property, its condition or its value. Neither Mayfair Square nor any joint agent has any authority to make any representations about the property, and accordingly any information given is entirely without responsibility on the part of the agents, seller(s), lessor(s) or landlord(s).

Any areas, measurements or distances are approximate. The text, photographs and plans are for guidance only and are not necessarily comprehensive. Regulations etc: Any reference to alterations to, or use of, any part of the property does not mean that any necessary planning, building regulations or other consent has been obtained. A buyer or lessee must find out by inspection or in other ways that these matters have been properly dealt with and that all information is correct.



MAYFAIR SQUARE

1 Mayfair Place, London W1J 8AJ, United Kingdom

+44 (0)207 184 9888 | info@mayfairsquare.co.uk | www.mayfairsquare.co.uk
