

PARK ROAD, REGENT'S PARK, LONDON
£2,425 PW



MAYFAIR SQUARE

1 Mayfair Place, London W1J 8AJ, United Kingdom

+44 (0)207 184 9888 | info@mayfairsquare.co.uk | www.mayfairsquare.co.uk

PARK ROAD, REGENT'S PARK, LONDON

£2,425 PW

PROPERTY DESCRIPTION

Beautiful Four-Bedroom Apartment with Regent's Park Views.

This spacious four-bedroom apartment, spanning an impressive 2,552 sq ft, is located in the prestigious Strathmore Court mansion block and offers stunning views over Regent's Park. Situated in one of NW8's most desirable residential locations, this property perfectly balances elegant living with access to London's vibrant amenities.

Key Features:

- **Expansive Living Areas:** The property includes a double-volume reception room, ideal for entertaining, and a 16ft fully fitted kitchen with modern appliances.
- **Master Bedroom Suite:** The master bedroom boasts an en-suite dressing area and a luxurious bathroom suite, offering a private retreat.
- **Generously Sized:** Spanning 2,552 sq ft, the apartment offers ample space for comfortable living, with three additional en-suite bedrooms, a guest bathroom, and a cloakroom.
- **Pet-Friendly Living:** The landlord is flexible with tenants who have pets, ensuring all members of your household feel welcome.
- **Modern Amenities:** Residents benefit from a lift, porterage, and access to a Westminster parking permit.

Unbeatable Location:

Strathmore Court is perfectly situated to enjoy the best of Regent's Park and St John's Wood:

- **Regent's Park:** Located directly opposite, the park offers 395 acres of green space, home to London Zoo, beautiful gardens, and tranquil walking paths.
- **Lord's Cricket Ground:** Just moments away, this iconic venue adds a touch of history to the neighborhood.
- **St John's Wood High Street:** A short walk away, this vibrant area offers boutique shops, high-end restaurants, and bustling bars.

Ideal for Professionals, Families, and Students, With its proximity to top educational institutions, including London Business School, University of Westminster, and the Royal College of Physicians.

Exceptional Connectivity:

Residents benefit from excellent transport links, including:

- St John's Wood Underground Station (Jubilee Line)
- Marylebone Station (Bakerloo Line and National Rail)

These connections provide fast access to the West End, Canary Wharf, and other key destinations across London.

A Prestigious Art Deco Residence:

Strathmore Court is a distinguished Art Deco mansion block, known for its elegance and prime location. Its stunning views over Regent's Park, coupled with modern conveniences and a pet-friendly policy.



MAYFAIR SQUARE

1 Mayfair Place, London W1J 8AJ, United Kingdom

+44 (0)207 184 9888 | info@mayfairsquare.co.uk | www.mayfairsquare.co.uk



MAYFAIR SQUARE

1 Mayfair Place, London W1J 8AJ, United Kingdom

+44 (0)207 184 9888 | info@mayfairsquare.co.uk | www.mayfairsquare.co.uk

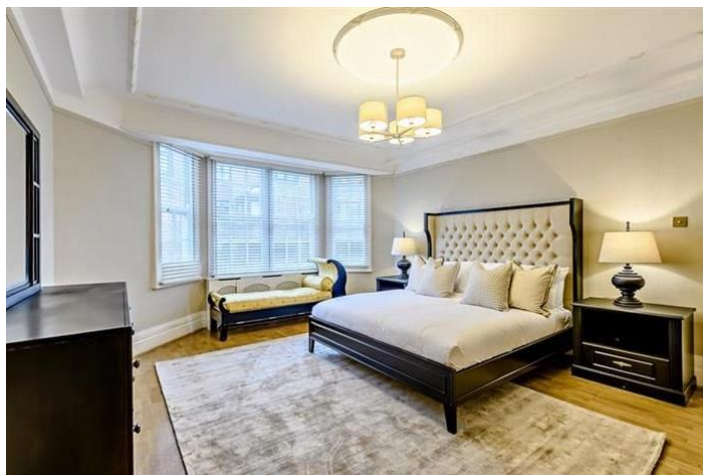
PARK ROAD, REGENT'S PARK, LONDON
£2,425 PW



MAYFAIR SQUARE

1 Mayfair Place, London W1J 8AJ, United Kingdom

+44 (0)207 184 9888 | info@mayfairsquare.co.uk | www.mayfairsquare.co.uk



MAYFAIR SQUARE

1 Mayfair Place, London W1J 8AJ, United Kingdom

+44 (0)207 184 9888 | info@mayfairsquare.co.uk | www.mayfairsquare.co.uk



MAYFAIR SQUARE

1 Mayfair Place, London W1J 8AJ, United Kingdom

+44 (0)207 184 9888 | info@mayfairsquare.co.uk | www.mayfairsquare.co.uk



MAYFAIR SQUARE

1 Mayfair Place, London W1J 8AJ, United Kingdom

+44 (0)207 184 9888 | info@mayfairsquare.co.uk | www.mayfairsquare.co.uk



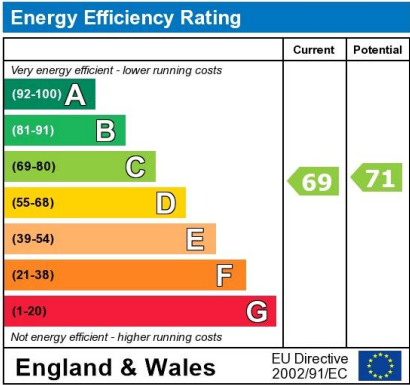
MAYFAIR SQUARE

1 Mayfair Place, London W1J 8AJ, United Kingdom

+44 (0)207 184 9888 | info@mayfairsquare.co.uk | www.mayfairsquare.co.uk

PARK ROAD, REGENT'S PARK, LONDON

£2,425 PW



The energy efficiency rating is a measure of the overall efficiency of a home. The higher the rating the more energy efficient the home is and the lower the fuel bills will be.



MAYFAIR SQUARE

1 Mayfair Place, London W1J 8AJ, United Kingdom

+44 (0)207 184 9888 | info@mayfairsquare.co.uk | www.mayfairsquare.co.uk

PARK ROAD, REGENT'S PARK, LONDON

£2,425 PW

FOR MORE INFORMATION PLEASE CONTACT US

Important Notice:

Particulars: These particulars are not an offer or contract, nor part of one. You should not rely on statements by Mayfair Square in the particulars or by word of mouth or in writing ("information") as being factually accurate about the property, its condition or its value. Neither Mayfair Square nor any joint agent has any authority to make any representations about the property, and accordingly any information given is entirely without responsibility on the part of the agents, seller(s), lessor(s) or landlord(s).

Any areas, measurements or distances are approximate. The text, photographs and plans are for guidance only and are not necessarily comprehensive. Regulations etc: Any reference to alterations to, or use of, any part of the property does not mean that any necessary planning, building regulations or other consent has been obtained. A buyer or lessee must find out by inspection or in other ways that these matters have been properly dealt with and that all information is correct.



MAYFAIR SQUARE

1 Mayfair Place, London W1J 8AJ, United Kingdom

+44 (0)207 184 9888 | info@mayfairsquare.co.uk | www.mayfairsquare.co.uk
