

HALLAM STREET, MARYLEBONE, LONDON W1
£577 PW



MAYFAIR SQUARE

1 Mayfair Place, London W1J 8AJ, United Kingdom

+44 (0)207 184 9888 | info@mayfairsquare.co.uk | www.mayfairsquare.co.uk

HALLAM STREET, MARYLEBONE, LONDON W1

£577 PW

PROPERTY DESCRIPTION

Excellent One-Bedroom Apartment in the Heart of Marylebone.

The apartment is situated in a beautiful and sought-after red brick mansion block. This well-maintained, portered building offers a furnished one-bedroom apartment with an abundance of natural light and refined living space in one of London's most desirable neighbourhoods.

The apartment features a bright and spacious reception room, a modern kitchen, and a double bedroom with built-in wardrobes. High ceilings and wooden flooring enhance the sense of space and charm, while large windows flood the interior with natural light.

Residents benefit from inclusive heating and hot water, meaning the cost of these utilities is covered within the rent/service charge, with no additional payments required. A 24-hour porter service also ensures both security and convenience.

Key Features:

- * Furnished
- * Heating & Hot Water Included in Rent/Service Charge
- * Well-Maintained Building
- * 24-Hour Porter Service
- * First-Floor Apartment
- * High Ceilings & Wooden Flooring
- * Abundance of Natural Light
- * Short Walk to the Famous Regent's Park

This exceptional apartment is ideally located in Marylebone, offering easy access to boutique shops, fine dining, and excellent transport links. The iconic Regent's Park, with its stunning gardens, open spaces, and world-renowned attractions, is just a short walk away, perfect for outdoor leisure and relaxation.

Living in Marylebone.

Marylebone is one of London's most sought-after neighbourhoods, celebrated for its elegant Georgian architecture, charming garden squares, and vibrant village atmosphere. Residents enjoy boutique shopping, fine dining, and artisan cafés along Marylebone High Street, with Regent's Park just moments away, offering stunning gardens, a boating lake, and cultural events like the Frieze London art fair.

During the festive season, Marylebone Village transforms with a magical Christmas Lights Switch-On, featuring live music and local celebrations. Cultural highlights include The Wallace Collection and historic squares like Manchester Square and Montagu Square, adding to the area's timeless charm.

Blending heritage, luxury, and community spirit, Marylebone offers an exceptional lifestyle in the heart of London.



MAYFAIR SQUARE

1 Mayfair Place, London W1J 8AJ, United Kingdom

+44 (0)207 184 9888 | info@mayfairsquare.co.uk | www.mayfairsquare.co.uk

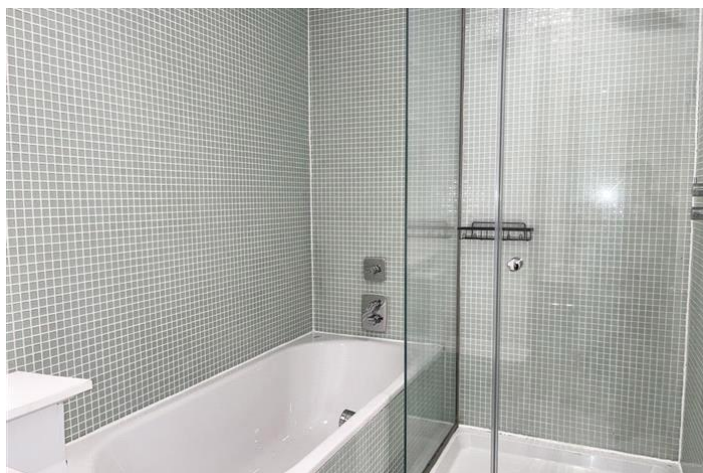
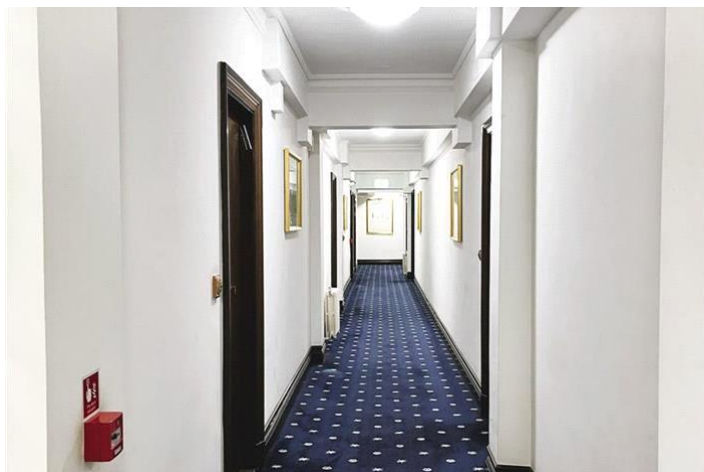
HALLAM STREET, MARYLEBONE, LONDON W1
£577 PW



MAYFAIR SQUARE

1 Mayfair Place, London W1J 8AJ, United Kingdom

+44 (0)207 184 9888 | info@mayfairsquare.co.uk | www.mayfairsquare.co.uk



MAYFAIR SQUARE

1 Mayfair Place, London W1J 8AJ, United Kingdom

+44 (0)207 184 9888 | info@mayfairsquare.co.uk | www.mayfairsquare.co.uk



MAYFAIR SQUARE

1 Mayfair Place, London W1J 8AJ, United Kingdom

+44 (0)207 184 9888 | info@mayfairsquare.co.uk | www.mayfairsquare.co.uk



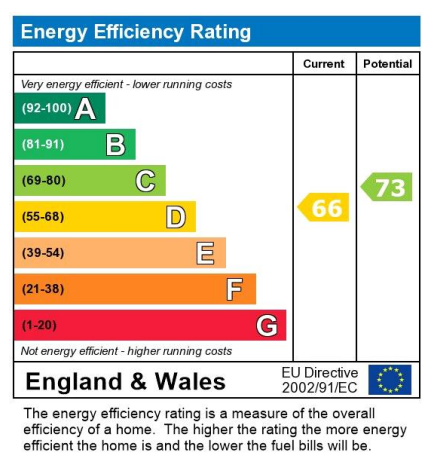
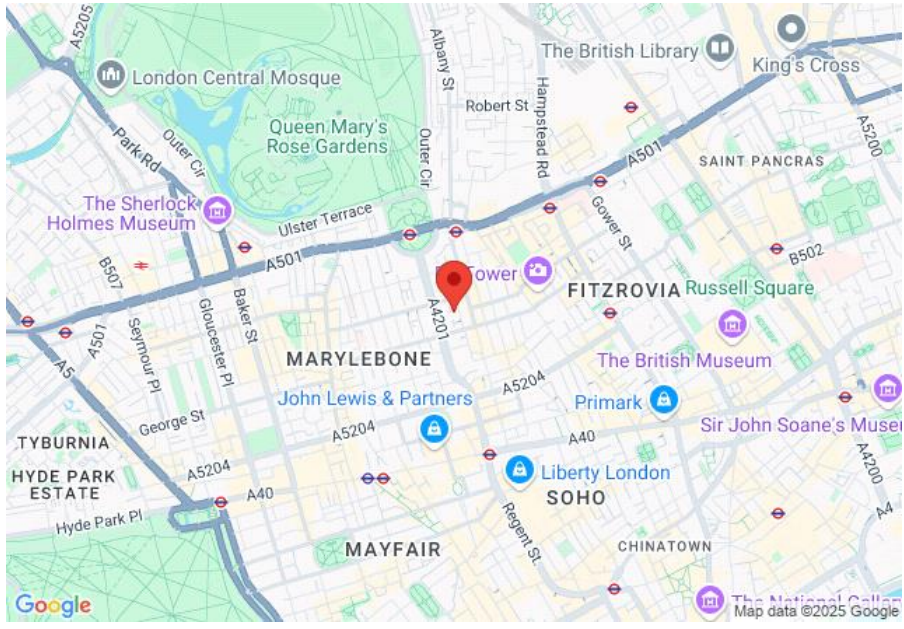
MAYFAIR SQUARE

1 Mayfair Place, London W1J 8AJ, United Kingdom

+44 (0)207 184 9888 | info@mayfairsquare.co.uk | www.mayfairsquare.co.uk

HALLAM STREET, MARYLEBONE, LONDON W1

£577 PW



MAYFAIR SQUARE

1 Mayfair Place, London W1J 8AJ, United Kingdom
+44 (0)207 184 9888 | info@mayfairsquare.co.uk | www.mayfairsquare.co.uk

HALLAM STREET, MARYLEBONE, LONDON W1

£577 PW

FOR MORE INFORMATION PLEASE CONTACT US

Important Notice:

Particulars: These particulars are not an offer or contract, nor part of one. You should not rely on statements by Mayfair Square in the particulars or by word of mouth or in writing ("information") as being factually accurate about the property, its condition or its value. Neither Mayfair Square nor any joint agent has any authority to make any representations about the property, and accordingly any information given is entirely without responsibility on the part of the agents, seller(s), lessor(s) or landlord(s).

Any areas, measurements or distances are approximate. The text, photographs and plans are for guidance only and are not necessarily comprehensive. Regulations etc: Any reference to alterations to, or use of, any part of the property does not mean that any necessary planning, building regulations or other consent has been obtained. A buyer or lessee must find out by inspection or in other ways that these matters have been properly dealt with and that all information is correct.



MAYFAIR SQUARE

1 Mayfair Place, London W1J 8AJ, United Kingdom

+44 (0)207 184 9888 | info@mayfairsquare.co.uk | www.mayfairsquare.co.uk
