

EATON SQUARE, BELGRAVIA, LONDON SW1

£12,000,000



MAYFAIR SQUARE

1 Mayfair Place, London W1J 8AJ, United Kingdom

+44 (0)207 184 9888 | info@mayfairsquare.co.uk | www.mayfairsquare.co.uk

EATON SQUARE, BELGRAVIA, LONDON SW1

£12,000,000

PROPERTY DESCRIPTION

This beautiful five bedroom maisonette is situated in the heart of Belgravia.

The property is arranged over three floors and benefits from a lift.

On the first floor you have three double bedrooms with all en-suite, the second floor has a further two double bedrooms with en-suite and a fully fitted modern kitchen. The third floor has a separate dining room and large reception room leading to a beautiful terrace.

Shopping and Eating Out in Belgravia

Elizabeth Street, Motcomb Street and Orange Square have a village atmosphere with a wide selection of excellent restaurants and independent boutiques. Belgravia is also a stone throw away from one of London's most luxurious shopping area which includes Harrods, Harvey Nichols and Sloane Street.

Parks & Green Spaces

Open space of Hyde Park, which has the famous Serpentine Lake, and offering 350 acres of green space are short walk away.

Beautiful Belgrave Square Garden, Chester Square Garden with lofty London plane trees.

Tenure: Share of Freehold



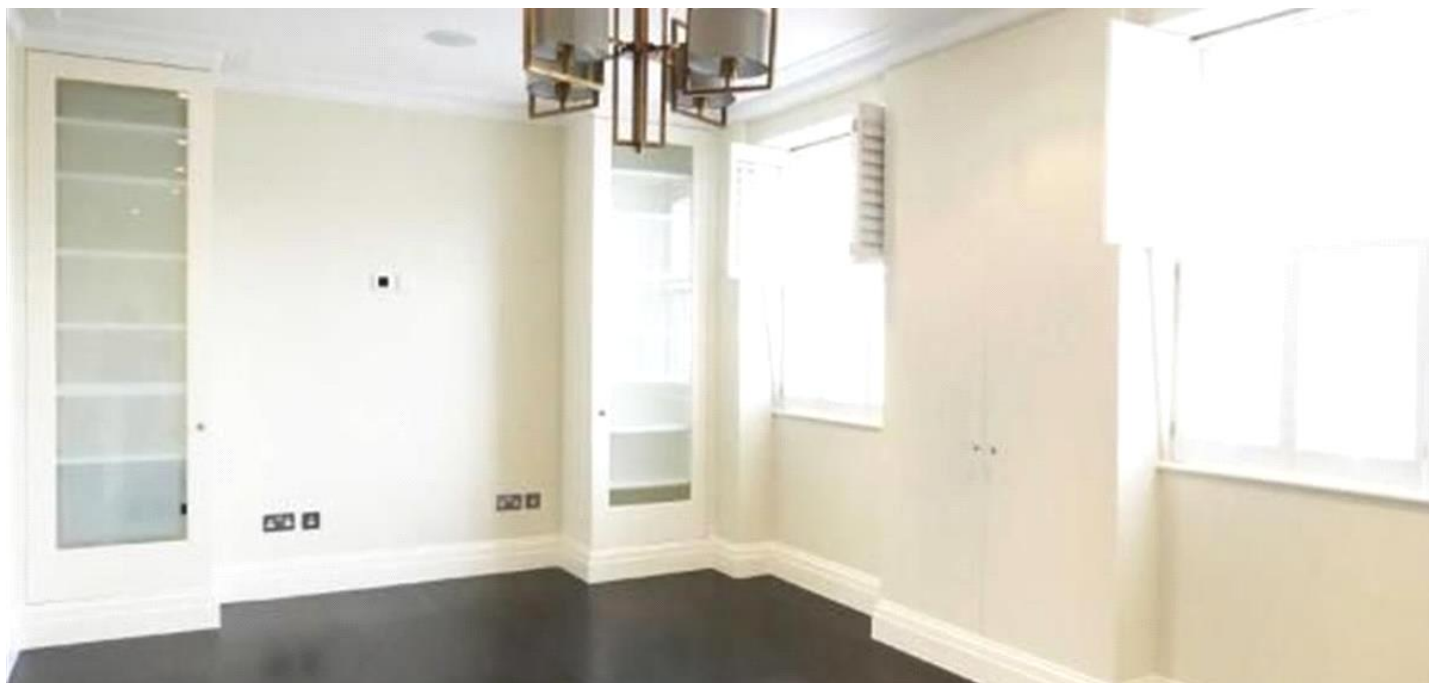
MAYFAIR SQUARE

1 Mayfair Place, London W1J 8AJ, United Kingdom

+44 (0)207 184 9888 | info@mayfairsquare.co.uk | www.mayfairsquare.co.uk

EATON SQUARE, BELGRAVIA, LONDON SW1

£12,000,000



MAYFAIR SQUARE

1 Mayfair Place, London W1J 8AJ, United Kingdom

+44 (0)207 184 9888 | info@mayfairsquare.co.uk | www.mayfairsquare.co.uk



MAYFAIR SQUARE

1 Mayfair Place, London W1J 8AJ, United Kingdom

+44 (0)207 184 9888 | info@mayfairsquare.co.uk | www.mayfairsquare.co.uk



MAYFAIR SQUARE

1 Mayfair Place, London W1J 8AJ, United Kingdom

+44 (0)207 184 9888 | info@mayfairsquare.co.uk | www.mayfairsquare.co.uk



FLOORPLANS © 2013 GHD G34888 Ref: 19274
 This illustration is for identification purposes only. It does not constitute an offer of any real estate. It has been created using publicly available information. Therefore the accuracy of information cannot be guaranteed.
 While every care has been taken in the preparation of this plan, please check all dimensions, figures & contents by visiting the building or by visiting the relevant planning documents.



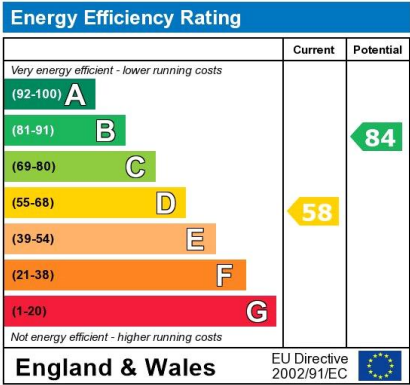
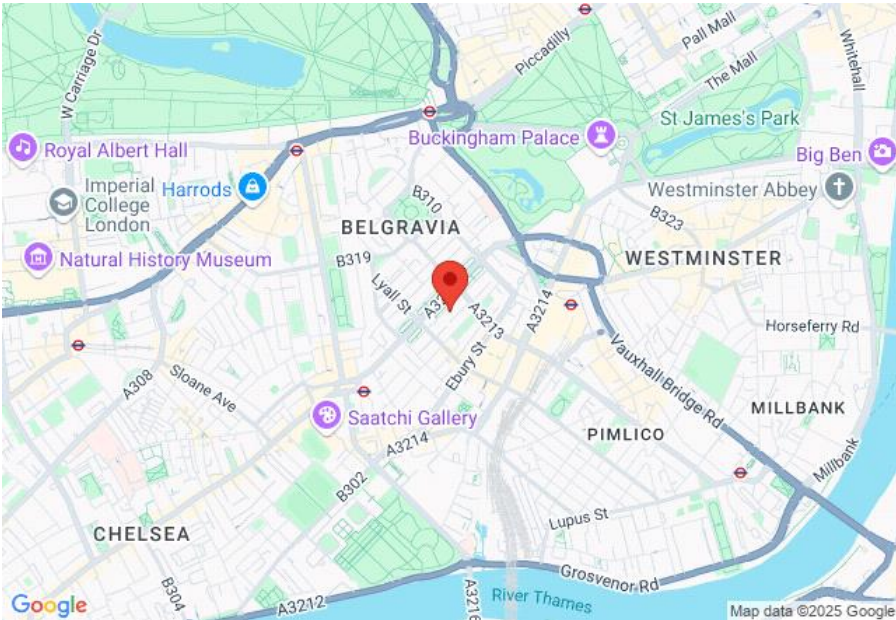
MAYFAIR SQUARE

1 Mayfair Place, London W1J 8AJ, United Kingdom

+44 (0)207 184 9888 | info@mayfairsquare.co.uk | www.mayfairsquare.co.uk

EATON SQUARE, BELGRAVIA, LONDON SW1

£12,000,000



The energy efficiency rating is a measure of the overall efficiency of a home. The higher the rating the more energy efficient the home is and the lower the fuel bills will be.



MAYFAIR SQUARE

1 Mayfair Place, London W1J 8AJ, United Kingdom

+44 (0)207 184 9888 | info@mayfairsquare.co.uk | www.mayfairsquare.co.uk

EATON SQUARE, BELGRAVIA, LONDON SW1

£12,000,000

FOR MORE INFORMATION PLEASE CONTACT US

Important Notice:

Particulars: These particulars are not an offer or contract, nor part of one. You should not rely on statements by Mayfair Square in the particulars or by word of mouth or in writing ("information") as being factually accurate about the property, its condition or its value. Neither Mayfair Square nor any joint agent has any authority to make any representations about the property, and accordingly any information given is entirely without responsibility on the part of the agents, seller(s), lessor(s) or landlord(s).

Any areas, measurements or distances are approximate. The text, photographs and plans are for guidance only and are not necessarily comprehensive. Regulations etc: Any reference to alterations to, or use of, any part of the property does not mean that any necessary planning, building regulations or other consent has been obtained. A buyer or lessee must find out by inspection or in other ways that these matters have been properly dealt with and that all information is correct.



MAYFAIR SQUARE

1 Mayfair Place, London W1J 8AJ, United Kingdom

+44 (0)207 184 9888 | info@mayfairsquare.co.uk | www.mayfairsquare.co.uk
