

ORCHARD COURT, MARYLEBONE, LONDON W1

GUIDE PRICE £13,500,000



MAYFAIR SQUARE

1 Mayfair Place, London W1J 8AJ, United Kingdom

+44 (0)207 184 9888 | info@mayfairsquare.co.uk | www.mayfairsquare.co.uk

ORCHARD COURT, MARYLEBONE, LONDON W1

GUIDE PRICE £13,500,000

PROPERTY DESCRIPTION

A beautiful seven bedroom apartment in one of Marylebone best residential buildings. Orchard Court sits on Portman Square which has a private garden square of approximately 1 hectare. The property has seven bedrooms, seven bathrooms, three receptions, and a separate fully fitted kitchen and benefits from air conditioning throughout the apartment.

The building benefits from 24 hours porter service.

Orchard Court is moments from luxury shopping at Selfridges and Marylebone High Street to various bars and restaurants of Marylebone Village.

Tenure: Leasehold



MAYFAIR SQUARE

1 Mayfair Place, London W1J 8AJ, United Kingdom

+44 (0)207 184 9888 | info@mayfairsquare.co.uk | www.mayfairsquare.co.uk

ORCHARD COURT, MARYLEBONE, LONDON W1

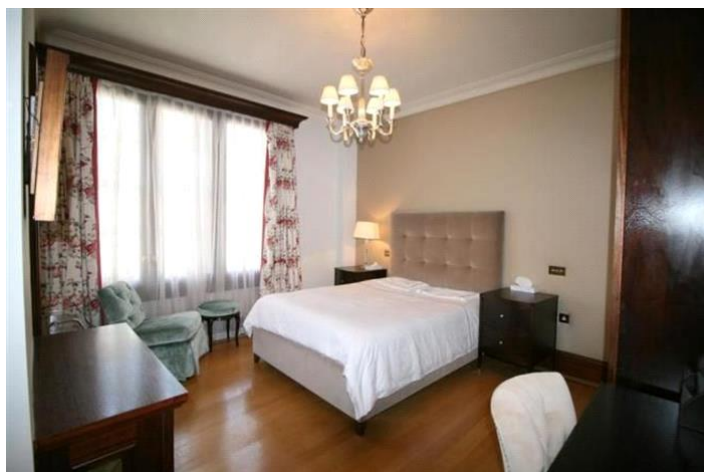
GUIDE PRICE £13,500,000



MAYFAIR SQUARE

1 Mayfair Place, London W1J 8AJ, United Kingdom

+44 (0)207 184 9888 | info@mayfairsquare.co.uk | www.mayfairsquare.co.uk



MAYFAIR SQUARE

1 Mayfair Place, London W1J 8AJ, United Kingdom

+44 (0)207 184 9888 | info@mayfairsquare.co.uk | www.mayfairsquare.co.uk

FLOOR PLAN



APPROX GROSS INTERNAL FLOOR AREA 5218.840 SQ.FT (299.04 SQ.M)

Illustration for identification purposes only.
measurements are approximate, not to scale.



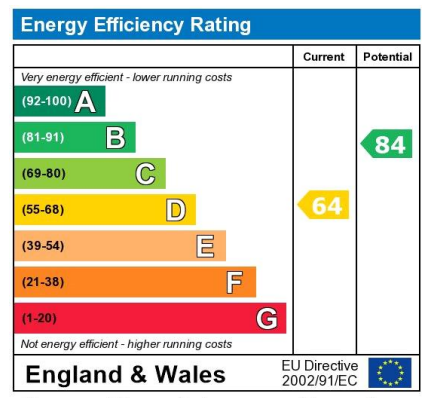
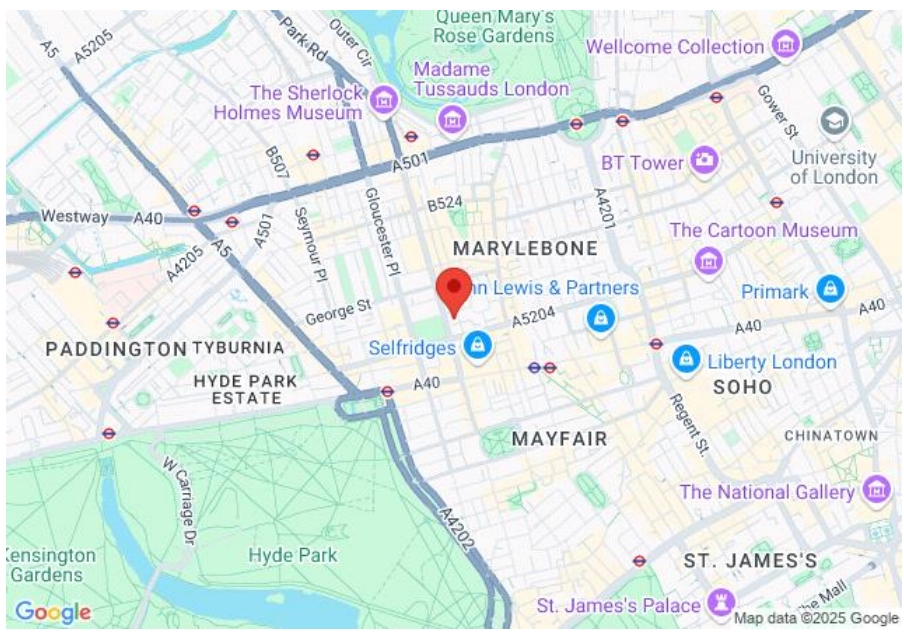
MAYFAIR SQUARE

1 Mayfair Place, London W1J 8AJ, United Kingdom

+44 (0)207 184 9888 | info@mayfairsquare.co.uk | www.mayfairsquare.co.uk

ORCHARD COURT, MARYLEBONE, LONDON W1

GUIDE PRICE £13,500,000



The energy efficiency rating is a measure of the overall efficiency of a home. The higher the rating the more energy efficient the home is and the lower the fuel bills will be.



MAYFAIR SQUARE

1 Mayfair Place, London W1J 8AJ, United Kingdom

+44 (0)207 184 9888 | info@mayfairsquare.co.uk | www.mayfairsquare.co.uk

ORCHARD COURT, MARYLEBONE, LONDON W1

GUIDE PRICE £13,500,000

FOR MORE INFORMATION PLEASE CONTACT US

Important Notice:

Particulars: These particulars are not an offer or contract, nor part of one. You should not rely on statements by Mayfair Square in the particulars or by word of mouth or in writing ("information") as being factually accurate about the property, its condition or its value. Neither Mayfair Square nor any joint agent has any authority to make any representations about the property, and accordingly any information given is entirely without responsibility on the part of the agents, seller(s), lessor(s) or landlord(s).

Any areas, measurements or distances are approximate. The text, photographs and plans are for guidance only and are not necessarily comprehensive. Regulations etc: Any reference to alterations to, or use of, any part of the property does not mean that any necessary planning, building regulations or other consent has been obtained. A buyer or lessee must find out by inspection or in other ways that these matters have been properly dealt with and that all information is correct.



MAYFAIR SQUARE

1 Mayfair Place, London W1J 8AJ, United Kingdom

+44 (0)207 184 9888 | info@mayfairsquare.co.uk | www.mayfairsquare.co.uk
